

LOC/DME I-AVP <b>109.9</b> Chan <b>36</b>	APP CRS <b>045°</b>	Rwy Idg TDZE Apt Elev	<b>7501</b> <b>962</b> <b>962</b>
---	------------------------	-----------------------------	---

# ILS or LOC RWY 4

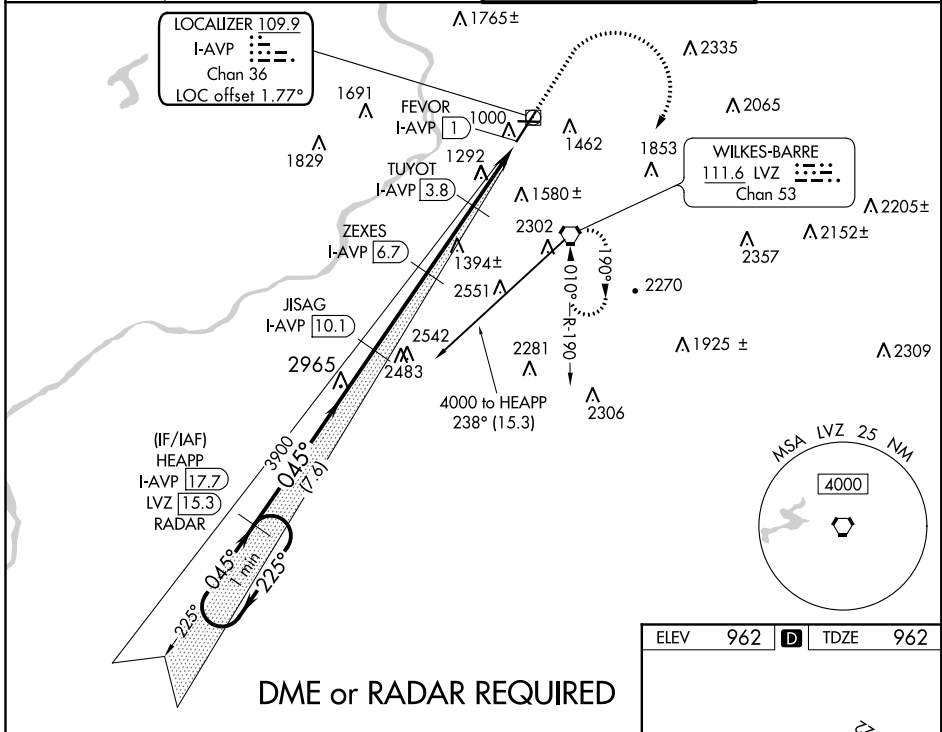
WILKES-BARRE/SCRANTON INTL (AVP)

**⚠** Circling to Rwy 10, 28 NA at night. Circling NA for Cats C and D southeast of Rwy 4-22. Autopilot coupled approach NA below 2530. DME required. For inop ALS, increase S-ILS 4 all Cats visibility to RVR 5000, and S-LOC 4 Cat C/D visibility to 1½ SM.

**MALSR**  
**AS**

**MISSED APPROACH:**  
Climb to 3000 then climbing right turn to 4000 direct LVZ VORTAC and hold.

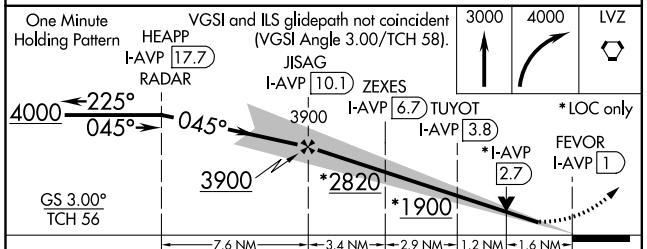
ATIS <b>111.6</b>	WILKES-BARRE APP CON <b>120.95 256.7</b> (280°-100°) <b>126.3 256.7</b> (101°-279°)	WILKES-BARRE TOWER <b>120.1 257.8</b>	GND CON <b>121.9</b>
----------------------	---	--	-------------------------



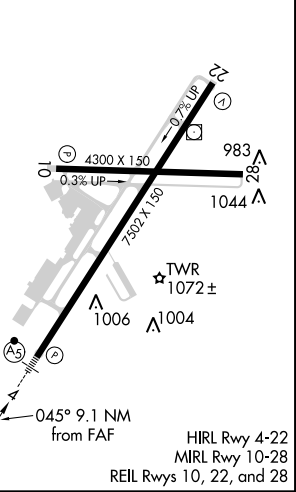
NE-4, 18 JUL 2019 to 15 AUG 2019

NE-4, 18 JUL 2019 to 15 AUG 2019

**DME or RADAR REQUIRED**



ELEV 962	<b>D</b>	TDZE 962
----------	----------	----------



CATEGORY	A	B	C	D
S-ILS 4	1262/24		300 (300-1)	
S-LOC 4	1540/24	578 (600-1)	1540-1¼	578 (600-1¼)
<b>C</b> CIRCLING	1840-1¼ 878 (900-1¼)	1980-1½ 1018 (1100-1½)	1980-3 1018 (1100-3)	2280-3 1318 (1400-3)

HIRL Rwy 4-22  
MIRL Rwy 10-28  
REIL Rws 10, 22, and 28