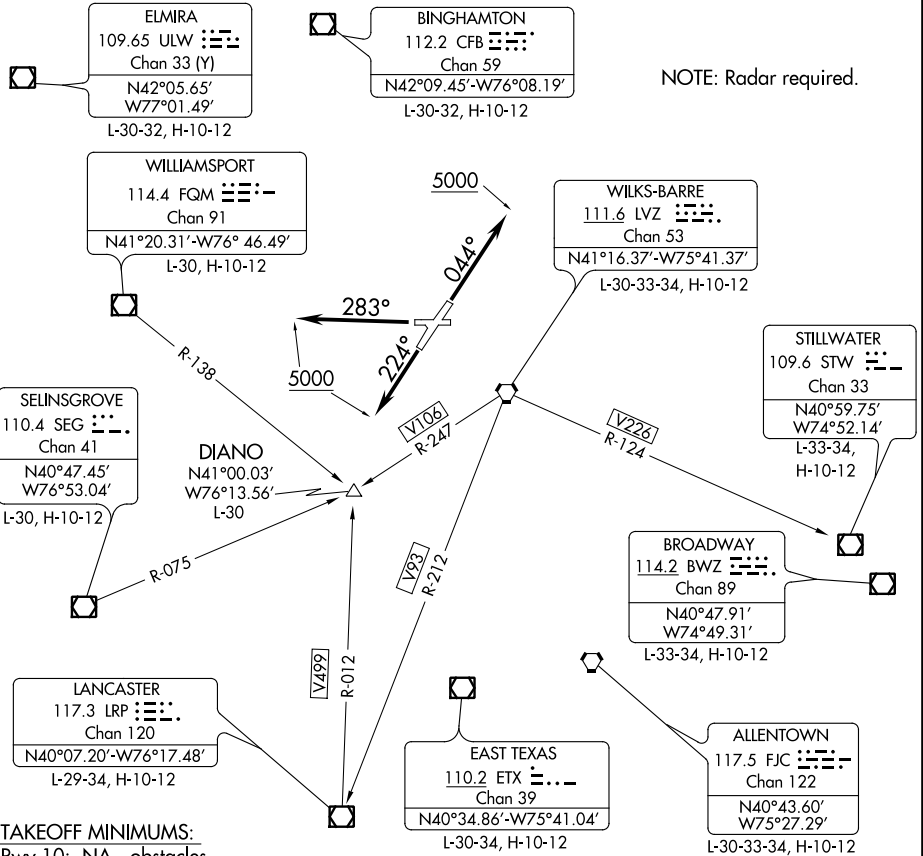


SCRANTON SEVEN DEPARTURE

WILKES-BARRE/SCRANTON INTL (AVP)
WILKES-BARRE/SCRANTON, PENNSYLVANIA

ATIS 111.6
GND CON
121.9
WILKES-BARRE TOWER
120.1 257.8
WILKES-BARRE DEP CON
120.95 256.7 (NORTH)
126.3 256.7 (SOUTH)

**TOP ALTITUDE:
5000**



NE-4, 18 JUL 2019 to 15 AUG 2019

NE-4, 18 JUL 2019 to 15 AUG 2019

TAKEOFF MINIMUMS:

- Rwy 10: NA - obstacles.
- Rwy 4: Standard with minimum climb of 400' per NM to 2700.
- Rwy 22: Standard with minimum climb of 290' per NM to 3100.
- Rwy 28: Standard with minimum climb of 270' per NM to 2100.

NOTE: Chart not to scale.

DEPARTURE ROUTE DESCRIPTION

TAKEOFF RUNWAY 4: Climb heading 044° to 5000, thence....

TAKEOFF RUNWAY 22: Climb heading 224° to 5000, thence....

TAKEOFF RUNWAY 28: Climb heading 283° to 5000, thence....

....expect radar vectors to assigned route/navaid/fix and clearance to filed altitude/flight level within ten (10) minutes after departure.

SCRANTON SEVEN DEPARTURE