

LOC/DME I-HFW <b>109.3</b> Chan <b>30</b>	APP CRS <b>095°</b>	Rwy Idg TDZE Apt Elev	<b>8800</b> <b>1015</b> <b>1026</b>
---	------------------------	-----------------------------	---

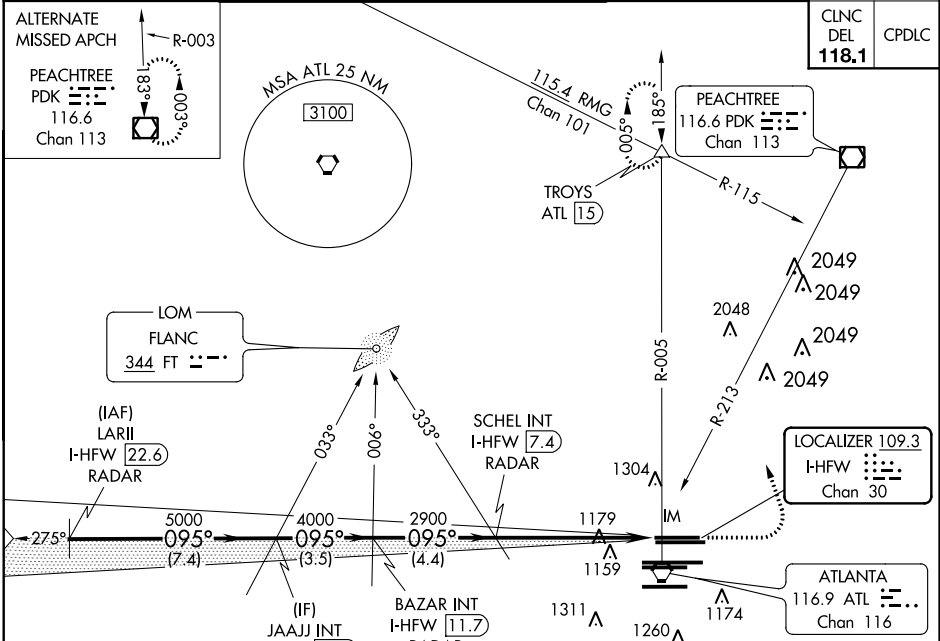
# ILS RWY 8L (CAT II & III)

HARTSFIELD-JACKSON ATLANTA INTL (ATL)

Simultaneous approach authorized with Rwy 9L or 9R or 10, or Rwys 9L and 10.  
ADF or DME or RADAR required.

ALSF-2  
MISSED APPROACH: Climb to 1500 then climbing left turn to 3500 on ATL VORTAC R-005 INT/ATL 1.5 DME and hold.

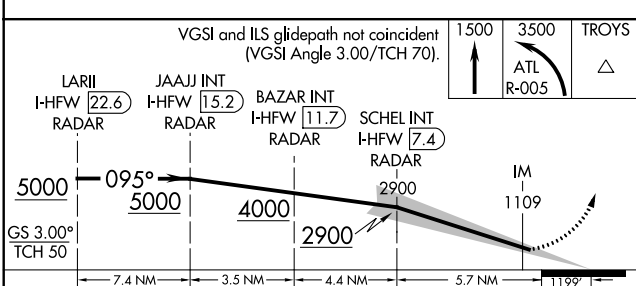
D-ATIS ARR <b>119.65</b>	ATLANTA APP CON DEP <b>127.9 379.9</b>	ATLANTA TOWER 8L-26R 8R-26L 9L-27R 9R-27L 10-28 RWYS	ALL RWYS <b>119.3 119.5 254.4</b>	GND CON 8L-26R,8R-26L 9L-27R,9R-27L 10-28 RWYS	ALL RWYS <b>121.9 121.75 121.65 254.4</b>
-----------------------------	--	---	---	---	---



SE-4, 15 AUG 2019 to 12 SEP 2019

SE-4, 15 AUG 2019 to 12 SEP 2019

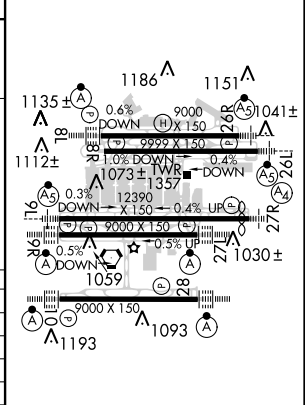
## RADAR REQUIRED



CATEGORY	A	B	C	D
S-ILS 8L	CAT II RA 105/12 100 DA 1115			
S-ILS 8L	CAT IIIa RVR 07			
S-ILS 8L	CAT IIIb RVR 06			
S-ILS 8L	CAT IIIc NA			

## CATEGORY II & III ILS - SPECIAL AIRCREW & AIRCRAFT CERTIFICATION REQUIRED

ELEV 1026	TDZE 1015
-----------	-----------



HIRL all Rwys  
TDZ/CL Rwys 8L, 9R, 10, 26R, 27L and 28