

ATLANTA, GEORGIA

AL-26 (FAA)

# ILS PRM RWY 26R (SIMULTANEOUS CLOSE PARALLEL)

HARTSFIELD-JACKSON ATLANTA INTL (ATL)

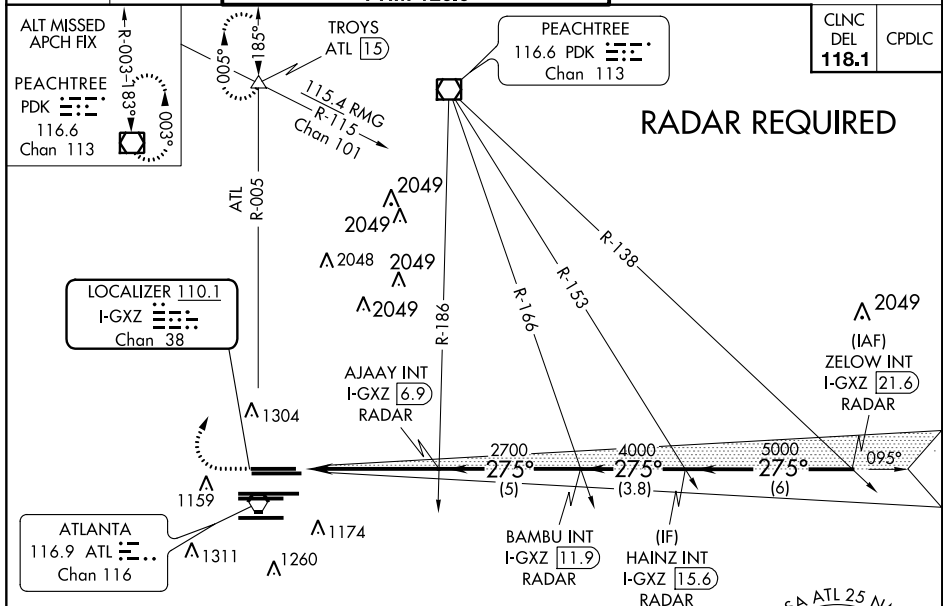
LOC/DME I-GXZ <b>110.1</b> Chan <b>38</b>	APP CRS <b>275°</b>	Rwy ldg <b>8800</b> TDZE <b>990</b> Apt Elev <b>1026</b>
---	------------------------	--

Simultaneous close parallel approach authorized with ILS PRM and RNAV PRM Rwy 27R or 27L or 28, or Rwys 27R and 28, or Rwys 27L and 28. Procedure not authorized when glideslope not available. Dual VHF comm required. See additional requirements on AAUP.



MISSED APPROACH: Climb to 1400 then climbing right turn to 3500 on ATL VORTAC R-005 to TROYS INT/ATL 15 DME and hold.

D-ATIS ARR <b>119.65</b> DEP <b>125.55</b>	ATLANTA APP CON <b>127.9 379.9</b>	ATLANTA TOWER 8L-26R 8R-26L 9L-27R 9R-27L 10-28 <b>119.1 125.325 123.85 119.3 119.5 254.4</b> PRM <b>126.9</b>	ALL RWYS (8L-26R,8R-26L) (9L-27R,9R-27L) 10-28 <b>121.9 121.75 121.65 254.4</b>	GND CON ALL RWYS <b>121.9 121.75 121.65 254.4</b>
--	--	---	--	--

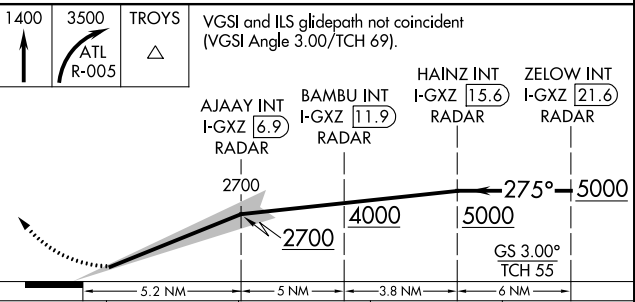
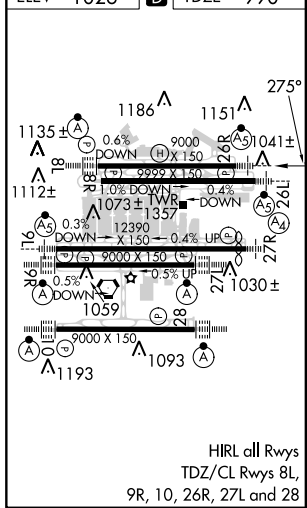


## RADAR REQUIRED

SE-4, 15 AUG 2019 to 12 SEP 2019

SE-4, 15 AUG 2019 to 12 SEP 2019

ELEV <b>1026</b>	<b>D</b>	TDZE <b>990</b>
------------------	----------	-----------------



CATEGORY	A	B	C	D
S-ILS 26R		1190/18	200 (200-1/2)	

ATLANTA, GEORGIA  
Amdt 3 18SEP14

33°38'N-84°26'W

HARTSFIELD-JACKSON ATLANTA INTL (ATL)

# ILS PRM RWY 26R (SIMULTANEOUS CLOSE PARALLEL)