

ATLANTA, GEORGIA

AL-26 (FAA)

# ILS PRM RWY 27L

## (SIMULTANEOUS CLOSE PARALLEL)

HARTSFIELD-JACKSON ATLANTA INTL (ATL)

|   |                        |                             |  |
|---|------------------------|-----------------------------|--|
| LOC/DME I-FSQ<br><b>108.5</b><br>Chan <b>22</b> | APP CRS<br><b>275°</b> | Rwy Idg<br>TDZE<br>Apt Elev | <b>8865</b><br><b>999</b><br><b>1026</b> |
|---|------------------------|-----------------------------|--|

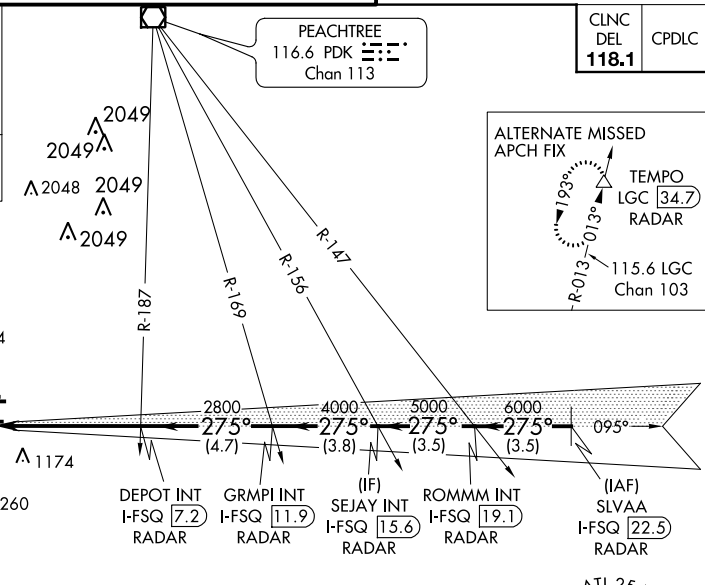
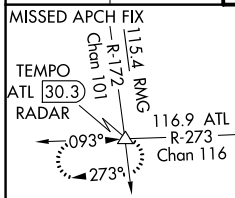
Simultaneous close parallel approach authorized with ILS PRM and RNAV PRM Rwy 26R or 26L or 28, or Rwy 26R and 28, or Rwy 26L and 28. Procedure not authorized when glideslope not available. Dual VHF comm required. See additional requirements on AAUP.

ALSF-2

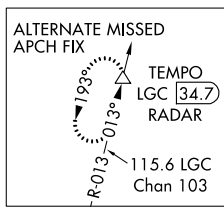


MISSED APPROACH: Climb to 1400 then climbing left turn to 4000 on ATL VORTAC R-273 to TEMPO INT/ATL 30.3 DME/RADAR and hold.

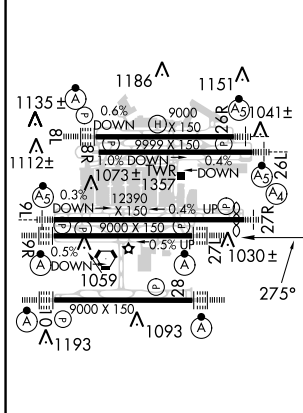
|  |                                       |   |  |                          |                                 |
|--|---------------------------------------|---|--|--------------------------|---------------------------------|
| D-ATIS<br>ARR <b>119.65</b><br>DEP <b>125.55</b> | ATLANTA APP CON<br><b>127.9 379.9</b> | ATLANTA TOWER<br>8L-26R 8R-26L 9L-27R 9R-27L 10-28 RWYS<br><b>119.1 125.325 123.85 119.3 119.5 254.4</b><br><b>PRM 132.55</b> | ALL RWYS<br>(8L-26R,8R-26L) (9L-27R,9R-27L) 10-28 RWYS<br><b>121.9 121.75 121.65 254.4</b> | GND CON<br><b>121.75</b> | ALL RWYS<br><b>121.65 254.4</b> |
|--|---------------------------------------|---|--|--------------------------|---------------------------------|



**LOCALIZER 108.5**  
I-FSQ  
Chan **22**

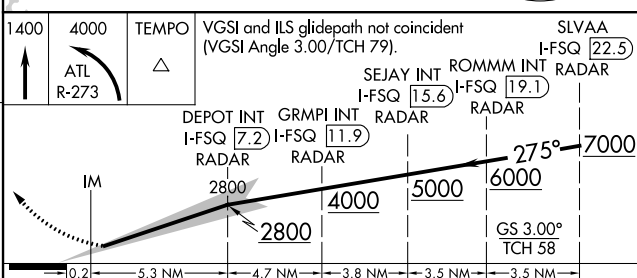


|                  |          |                 |
|------------------|----------|-----------------|
| ELEV <b>1026</b> | <b>D</b> | TDZE <b>999</b> |
|------------------|----------|-----------------|



HIRL all Rwy's  
TDZ/CL Rwy's 8L, 9R, 10, 26R, 27L and 28

### RADAR REQUIRED



|           |         |   |               |   |
|-----------|---------|---|---------------|---|
| CATEGORY  | A       | B | C             | D |
| S-ILS 27L | 1199/18 |   | 200 (200-1/2) |   |

ATLANTA, GEORGIA  
Amdt 3A 15OCT15

# ILS PRM RWY 27L (SIMULTANEOUS CLOSE PARALLEL)

33°38'N-84°26'W HARTSFIELD-JACKSON ATLANTA INTL (ATL)

SE-4, 15 AUG 2019 to 12 SEP 2019

SE-4, 15 AUG 2019 to 12 SEP 2019