

ATLANTA, GEORGIA

AL-26 (FAA)

# ILS PRM RWY 27L (CAT II)

(SIMULTANEOUS CLOSE PARALLEL)  
HARTSFIELD-JACKSON ATLANTA INTL (ATL)

LOC/DME I-FSQ <b>108.5</b>	APP CRS <b>275°</b>	Rwy Idg <b>8865</b>
Chan <b>22</b>	TDZE <b>999</b>	Apt Elev <b>1026</b>

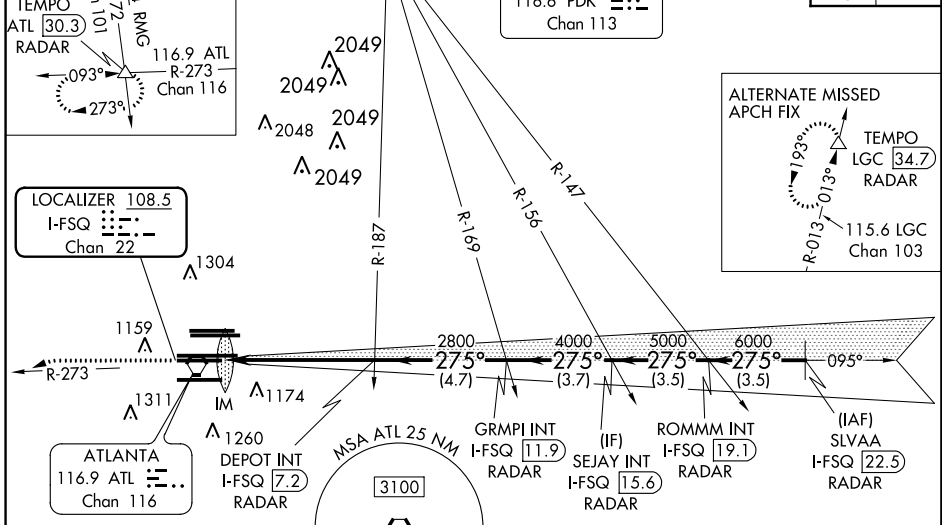
Simultaneous close parallel approach authorized with ILS PRM and RNAV PRM Rwy 26R or 26L or 28, or Rwy 26R and 28, or Rwy 26L and 28.  
 Procedure not authorized when glideslope not available.  
 Dual VHF comm required.  
 See additional requirements on AAUP.

ALSF-2

MISSED APPROACH: Climb to 1400 then climbing left turn to 4000 on ATL VORTAC R-273 to TEMPO INT/ATL 30.3 DME and hold.

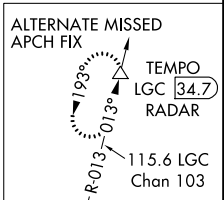
D-ATIS ARR <b>119.65</b>	ATLANTA APP CON DEP <b>125.55</b> <b>127.9</b> <b>379.9</b>	ATLANTA TOWER 8L-26R 8R-26L 9L-27R 9R-27L 10-28 RWY5 <b>119.1 125.325 123.85 119.3 119.5 254.4</b> <b>PRM 132.55</b>	ALL RWY5 <b>121.9</b>	GND CON <b>121.75</b>	ALL RWY5 <b>121.65 254.4</b>
-----------------------------	--	---	--------------------------	--------------------------	---------------------------------

MISSED APCH FIX R-172 R-176 R-174 R-170 R-172 R-176	PEACHTREE 116.6 PDK Chan 113	CLNC DEL <b>118.1</b>	CPDLC
---	------------------------------------	--------------------------	-------

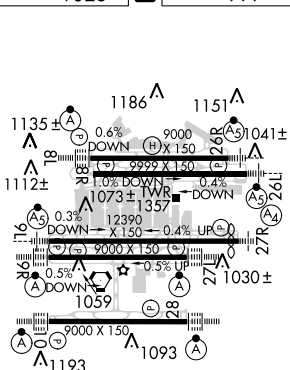


LOCALIZER <b>108.5</b>
I-FSQ Chan <b>22</b>

ATLANTA 116.9 ATL Chan <b>116</b>
---



ELEV <b>1026</b>	TDZE <b>999</b>
------------------	-----------------



### RADAR REQUIRED

VGSi and ILS glidepath not coincident (VGSi Angle 3.00°/TCH 79).				SLVAA I-FSQ [22.5]
1400	4000	TEMPO	SEJAY INT I-FSQ [15.6]	ROMMM INT I-FSQ [19.1]
DEPOT INT I-FSQ [7.2]		GRMPI INT I-FSQ [11.9]	RADAR	
7000				
IM				
2800				
5000				
6000				
GS 3.00° TCH 58				
1025	5.5 NM	4.7 NM	3.7 NM	3.5 NM
CATEGORY	A	B	C	D
S-ILS 27L	RA 127/12		100 DA	1099

### CATEGORY II ILS- SPECIAL AIRCREW & AIRCRAFT CERTIFICATION REQUIRED

HIRL all Rwy  
TDZ/CL Rwy 8L, 9R,  
10, 26R, 27L and 28

33°38'N-84°26'W

HARTSFIELD-JACKSON ATLANTA INTL (ATL)

# ILS PRM RWY 27L (CAT II) (SIMULTANEOUS CLOSE PARALLEL)