

ATLANTA, GEORGIA

AL-26 (FAA)

ILS PRM RWY 27L (SA CAT I) (SIMULTANEOUS CLOSE PARALLEL) HARTSFIELD-JACKSON ATLANTA INTL (ATL)

| | | | |
|---|------------------------|-----------------------------|--|
| LOC/DME I-FSQ 108.5 Chan 22 | APP CRS 275° | Rwy Idg TDZE Apt Elev | 8865 999 1026 |
|---|------------------------|-----------------------------|--|

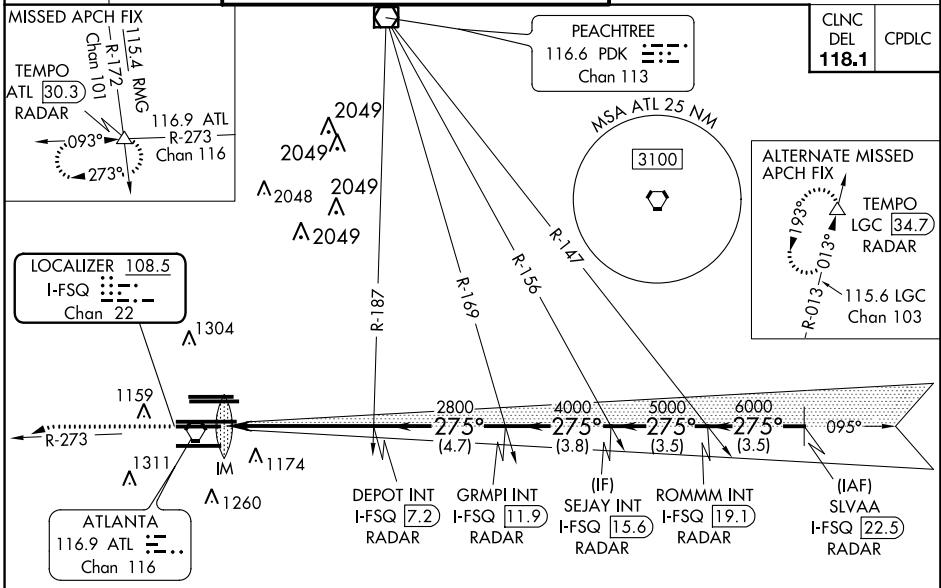
Simultaneous close parallel approach authorized with ILS PRM and RNAV PRM Rwy 26R or 26L or 28, or Rwy 26R and 28, or Rwy 26L and 28. Procedure not authorized when glideslope not available. Dual VHF comm required. See additional requirements on AANUP. Requires specific OPSPEC, MSPEC, or LOA approval and use of HUD to DH.

ALSF-2



MISSED APPROACH: Climb to 1400 then climbing left turn to 4000 on ATL VORTAC R-273 to TEMPO INT/ATL 30.3 DME/RADAR and hold.

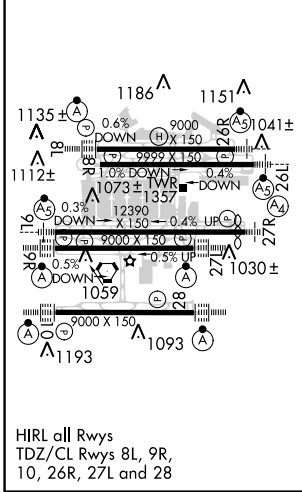
| | | | | |
|--|---------------------------------------|---|---|---|
| D-ATIS ARR 119.65 DEP 125.55 | ATLANTA APP CON 127.9 379.9 | ATLANTA TOWER 8L-26R 8R-26L 9L-27R 9R-27L 10-28 RWYS 119.1 125.325 123.85 119.3 119.5 254.4 PRM 132.55 | ALL RWYS (8L-26R,8R-26L) (9L-27R,9R-27L) 10-28 121.9 121.75 121.65 254.4 | GND CON 121.9 121.75 121.65 254.4 |
|--|---------------------------------------|---|---|---|



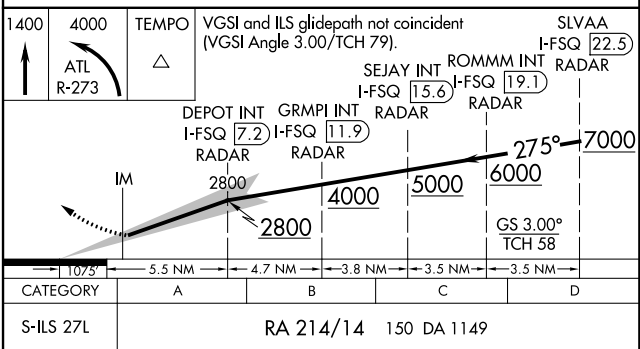
SE-4, 15 AUG 2019 to 12 SEP 2019

SE-4, 15 AUG 2019 to 12 SEP 2019

| | | |
|------------------|----------|-----------------|
| ELEV 1026 | D | TDZE 999 |
|------------------|----------|-----------------|



RADAR REQUIRED



SA CATEGORY I ILS- SPECIAL AIRCREW & AIRCRAFT CERTIFICATION REQUIRED

ATLANTA, GEORGIA
Amdt 3A 15OCT15

33°38'N-84°26'W

HARTSFIELD-JACKSON ATLANTA INTL (ATL)

ILS PRM RWY 27L (SA CAT I) (SIMULTANEOUS CLOSE PARALLEL)