

RNAV (GPS) PRM Y RWY 8L (SIMULTANEOUS CLOSE PARALLEL) HARTSFIELD-JACKSON ATLANTA INTL (ATL)

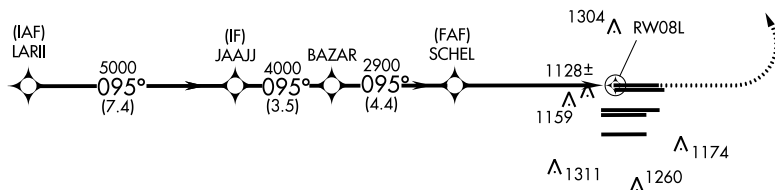
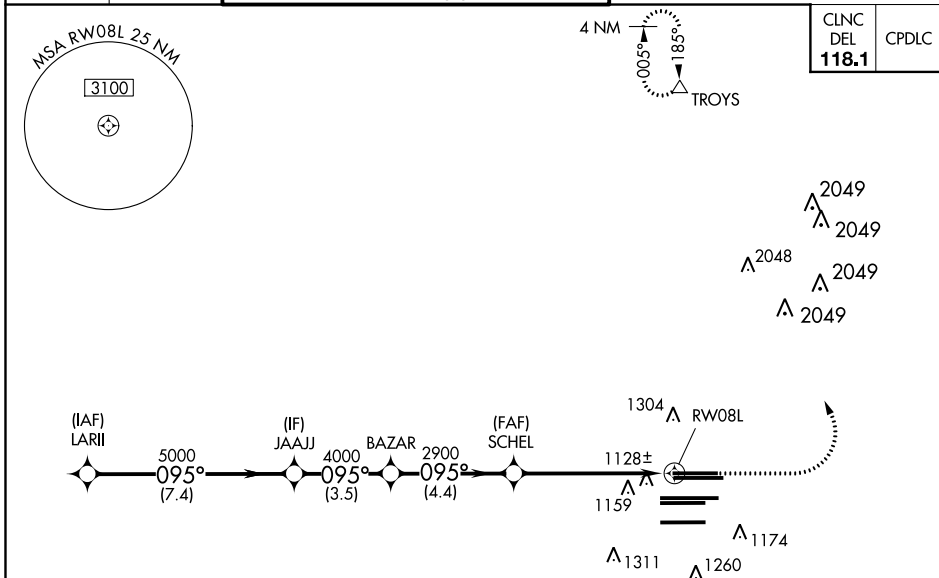
WAAS CH 99300 W08B	APP CRS 095°	Rwy Idg 8800 TDZE 1015 Apt Elev 1026
--	------------------------	--

NA For uncompensated Baro-VNAV systems, LNAV/VNAV NA below -7°C (20°F) or above 54°C (130°F). DME/DME RNP-0.3 NA. For inop ALSF-2, increase LNAV/VNAV all Cats visibility to 1/4 miles. Simultaneous close parallel approach authorized with ILS PRM and RNAV PRM Rwy 9L or 9R or 10, or Rwys 9L and 10, or Rwys 9R and 10. Dual VHF comm required. See additional requirements on AAPP. Use of FD or AP providing RNAV track guidance required during simultaneous operations.

ALSF-2

MISSED APPROACH:
Climb to 1500 then climbing left turn to 3500 direct TROYS and hold.

D-ATIS ARR 119.65 DEP 125.55	ATLANTA APP CON 127.9 379.9	ATLANTA TOWER ALL RWYS 119.1 125.325 123.85 119.3 119.5 254.4 PRM 126.9				GND CON 121.9 121.75 121.65 254.4	ALL RWYS 10-28
--	---------------------------------------	--	--	--	--	---	--------------------------

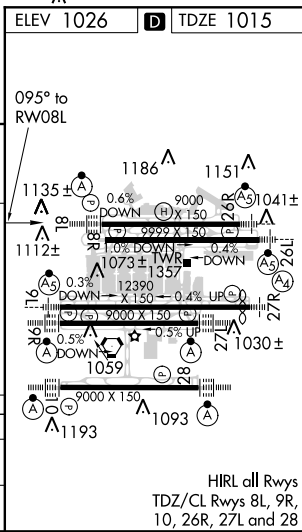


RADAR REQUIRED

VGSI and RNAV glidepath not coincident (VGSI Angle 3.00/TCH 70).

	1500	3500	TROYS
	↑	↘	△

LARII	JAAJJ	BAZAR	SCHEL	RW08L
5000	5000	4000	2900	2900
7.4 NM	3.5 NM	4.4 NM	5.8 NM	
GP 3.00°				
TCH 50				
CATEGORY	A	B	C	D
LPV DA		1215/18	200 (200-½)	
LNAV/VNAV DA		1404/45	389 (400-¾)	



SE-4, 15 AUG 2019 to 12 SEP 2019

SE-4, 15 AUG 2019 to 12 SEP 2019

RNAV (GPS) PRM Y RWY 8L (SIMULTANEOUS CLOSE PARALLEL)