


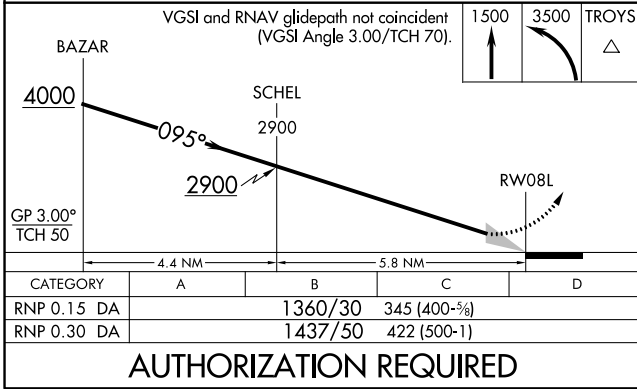
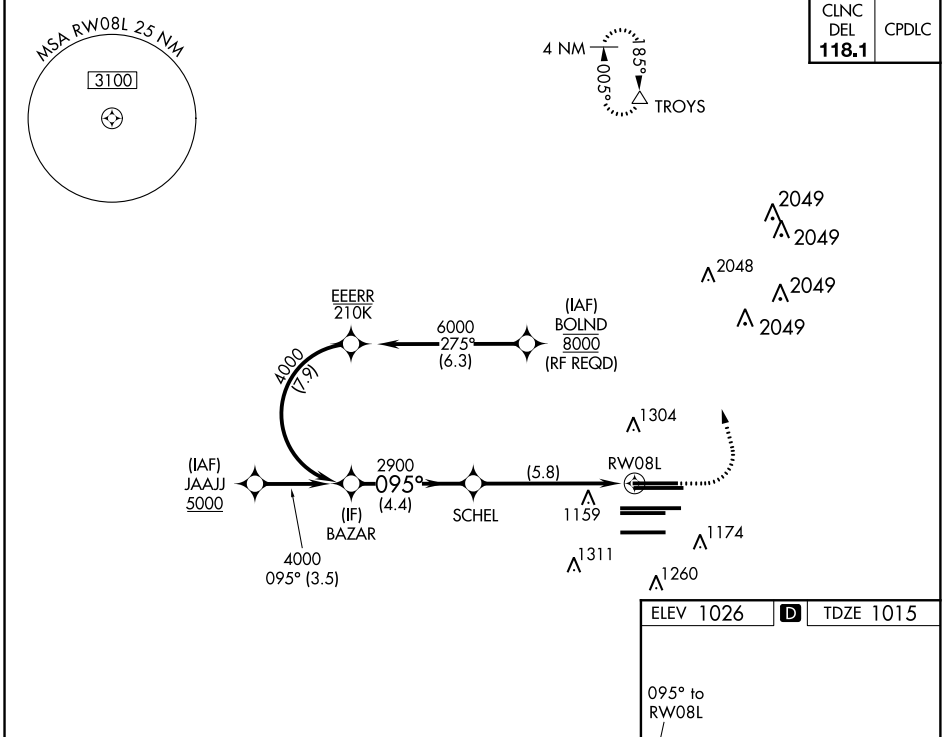
# RNAV (RNP) Z RWY 8L HARTSFIELD-JACKSON ATLANTA INTL (ATL)

APP CRS	Rwy Idg	<b>8800</b>
<b>095°</b>	TDZE	<b>1015</b>
	Apt Elev	<b>1026</b>

**▽** For uncompensated Baro-VNAV systems, procedure NA below -8°C (18°F) or above 54°C (130°F). GPS required. Simultaneous approach authorized. Arrival from BOLND NA during simultaneous triple approaches. For inop ALS, increase RNP 0.30 all Cats visibility to 1½ SM.

**ALS-F-2**  
  
**MISSED APPROACH:** Climb to 1500 then climbing left turn to 3500 direct TROYS and hold.

D-ATIS	ATLANTA APP CON	ATLANTA TOWER					ALL RWYS	GND CON	ALL RWYS
ARR <b>119.65</b>		8L-26R	8R-26L	9L-27R	9R-27L	10-28	(8L-26R,8R-26L)	(9L-27R,9R-27L)	10-28
DEP <b>125.55</b>	<b>127.9 379.9</b>	<b>119.1</b>	<b>125.325</b>	<b>123.85</b>	<b>119.3</b>	<b>119.5</b>	<b>121.9</b>	<b>121.75</b>	<b>121.65 254.4</b>



ELEV 1026	<b>D</b>	TDZE 1015
-----------	----------	-----------

**HIRL all Rwy's**  
 TDZ/CL Rwy's 8L, 9R, 10, 26R, 27L and 28

ATLANTA, GEORGIA  
 Amdt 1 12OCT17  
 HARTSFIELD-JACKSON ATLANTA INTL (ATL)  
 33°38'N-84°26'W  
**RNAV (RNP) Z RWY 8L**

**AUTHORIZATION REQUIRED**

SE-4, 15 AUG 2019 to 12 SEP 2019

SE-4, 15 AUG 2019 to 12 SEP 2019