

# TIKEE THREE ARRIVAL (RNAV)

WASHINGTON, DC

NE-3: 15 AUG 2019 to 12 SEP 2019

## ARRIVAL ROUTE DESCRIPTION

- BBONE TRANSITION (BBONE.TIKEE3):
- KESSEL TRANSITION (ESL.TIKEE3):
- SEALZ TRANSITION (SEALZ.TIKEE3):

All aircraft types landing HEF, 2VG2, NYG, RMN, HWY, CJR, EZF: From TIKEE on track 090° to JETIS, then on heading 090° or as assigned by ATC. Expect RADAR vectors to final approach course.

Props and Turboprop aircraft landing DAA, W00, VKX, ADW, 2W5, DCA, W32: From TIKEE on track 122° to GILFF, then on track 090° to HIGPO, then on heading 090° or as assigned by ATC. Expect RADAR vectors to final approach course.

- POTOMAC APP CON 120.45 306.925
- JOINT BASE ANDREWS ATIS 113.1 251.05
- DAVISON AAF ATIS 128.175
- RONALD REAGAN WASHINGTON NATIONAL D-ATIS 132.65

NOTE: RADAR required.

NOTE: RNAV 1.

NOTE: DME/DME/IRU or GPS required.

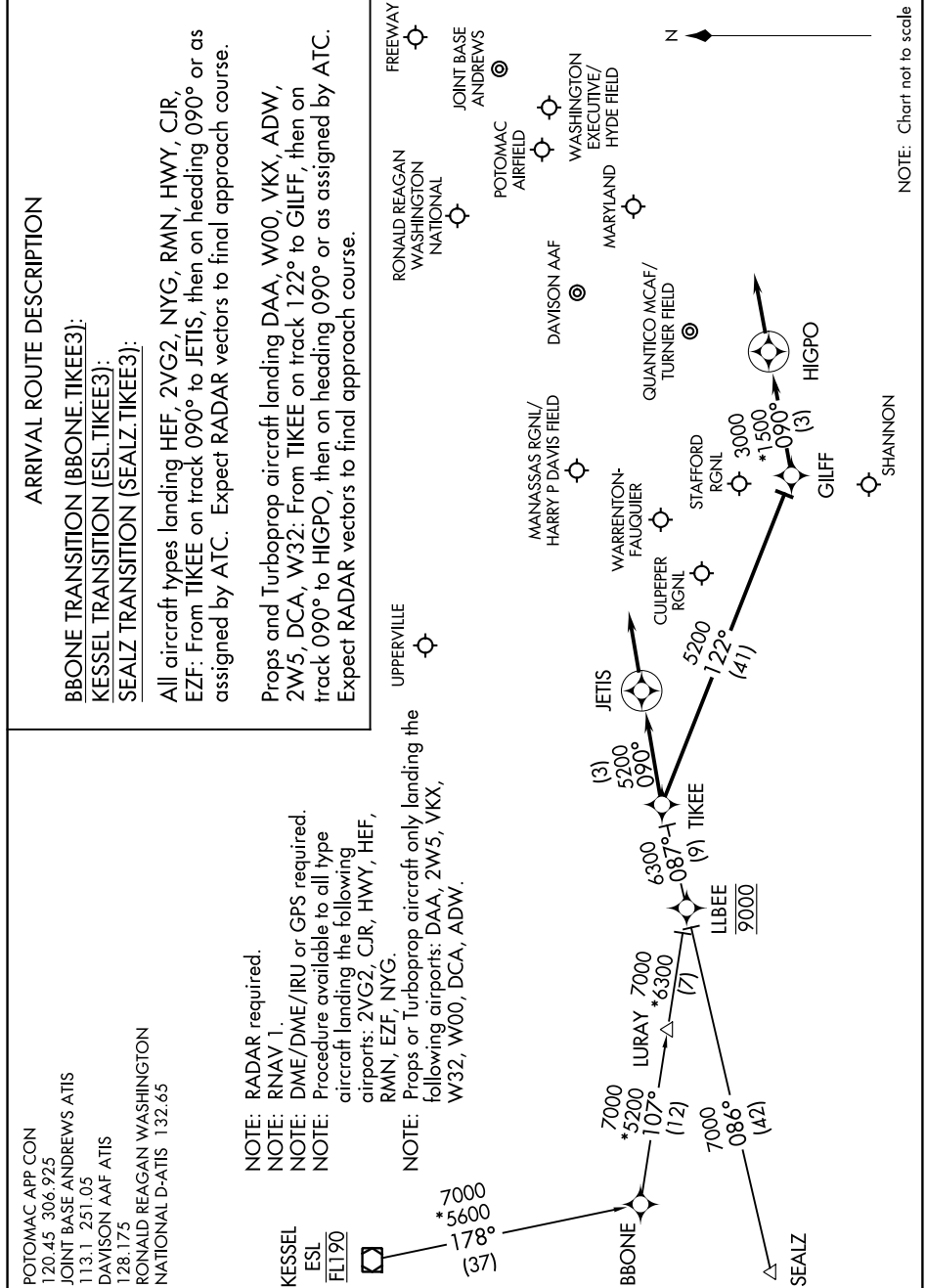
NOTE: Procedure available to all type aircraft landing the following airports: 2VG2, CJR, HWY, HEF, RMN, EZF, NYG.

NOTE: Props or Turboprop aircraft only landing the following airports: DAA, 2W5, VKX, W32, W00, DCA, ADW.



# TIKEE THREE ARRIVAL (RNAV)

WASHINGTON, DC



NOTE: Chart not to scale

NE-3: 15 AUG 2019 to 12 SEP 2019