


LOC/DME I-DEC <b>110.9</b> Chan <b>46</b>	APP CRS <b>060°</b>	Rwy Idg TDZE Apt Elev	<b>8496</b> <b>677</b> <b>682</b>
---	------------------------	-----------------------------	---

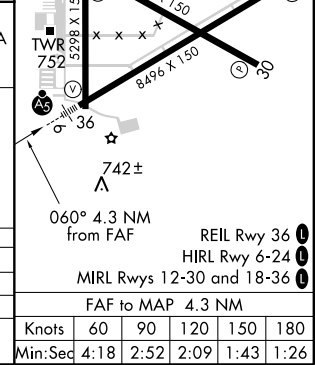
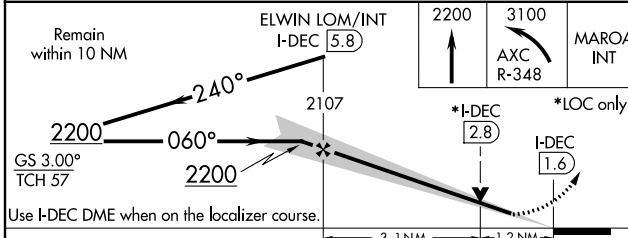
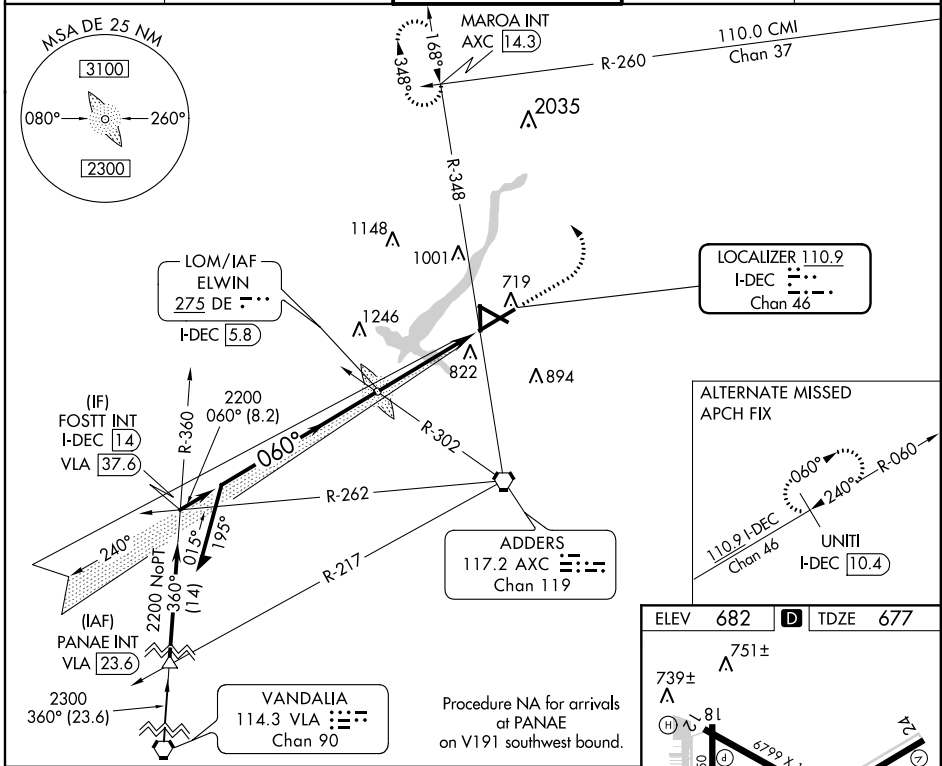
# ILS or LOC RWY 6

DECATUR (DEC)

**⚠** When local altimeter setting not received use Lincoln altimeter setting and increase all DA/MDA 80 feet, increase S-LOC 6 Cat C/D visibility to RVR 6000 and Circling Cat C/D visibility 1/4 SM. For inop ALS, increase S-LOC 6 Cat C/D visibility to 1 1/8 SM. For inop ALS when using Lincoln altimeter setting increase S-ILS 6 all Cats visibility to RVR 4500. VDP NA with Lincoln altimeter setting. # RVR 1800 authorized with the use of FD or AP or HUD to DA (NA when using Lincoln altimeter setting).

**MALSR**  
  
**MISSED APPROACH:** Climb to 2200 then climbing left turn to 3100 on heading 270° and AXC VORTAC R-348 to MAROA INT/AXC 14.3 DME and hold.

ATIS <b>126.35</b>	CHAMPAIGN APP CON* <b>132.85 290.225</b>	DECATUR TOWER* <b>118.9(CTAF) 291.775</b>	GND CON <b>121.75 291.775</b>	UNICOM <b>122.95</b>
-----------------------	---	--	----------------------------------	-------------------------



CATEGORY	A	B	C	D
S-ILS 6 #	877/24			
S-LOC 6	1140/24	463 (500-1/2)	1140/50	463 (500-1)
CIRCLING	1140-1 458 (500-1)	1240-1 558 (600-1)	1360-2 678 (700-2)	1360-2 1/4 678 (700-2 1/4)

EC-3, 15 AUG 2019 to 12 SEP 2019

EC-3, 15 AUG 2019 to 12 SEP 2019