

WAAS CH <b>82038</b> <b>W18A</b>	APP CRS <b>180°</b>	Rwy Idg TDZE <b>680</b> Apt Elev <b>682</b>	<b>5298</b>
--	------------------------	---	-------------

# RNAV (GPS) RWY 18

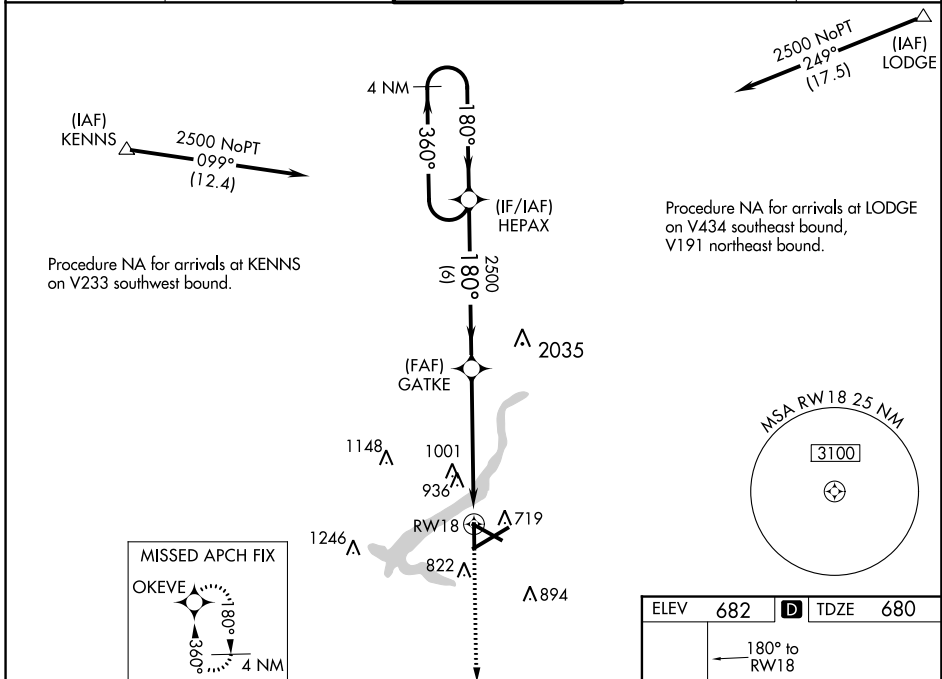
DECATUR (DEC)

**RNP APCH**

▼ For uncompensated Baro-VNAV systems, LNAV/VNAV NA below -19°C or above 54°C. Baro-VNAV and VDP NA when using Logan County altimeter setting. Rwy 18 helicopter visibility reduction below ¼ SM NA. When local altimeter setting not received, use Logan County altimeter setting: Increase LPV DA to 1032 feet and visibility all Cats ¼ mile, LNAV/VNAV DA to 1326 feet and visibility all Cats ½ mile; increase all MDA 80 feet and LNAV visibility Cats C/D ½ mile, Circling Cat C/D visibility ¼ mile.

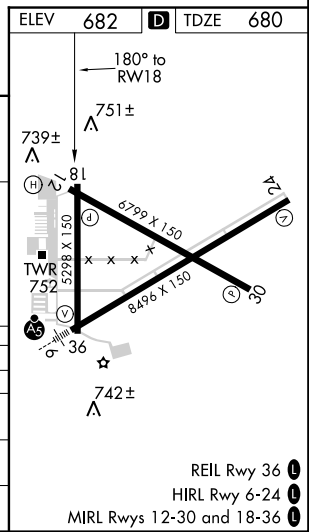
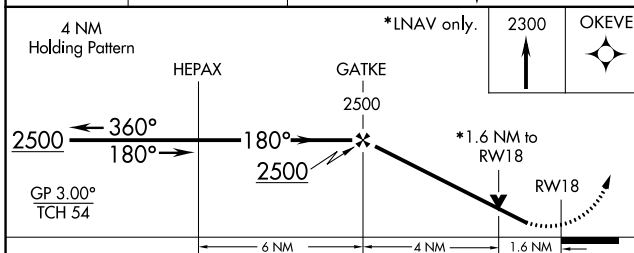
**MISSED APPROACH:**  
Climb to 2300 direct OKEVE and hold.

ATIS <b>126.35</b>	CHAMPAIGN APP CON * <b>132.85 290.225</b>	DECATUR TOWER * <b>118.9 (CTAF) 0 291.775</b>	GND CON <b>121.75 291.775</b>	UNICOM <b>122.95</b>
-----------------------	--	--	----------------------------------	-------------------------



EC-3, 15 AUG 2019 to 12 SEP 2019

EC-3, 15 AUG 2019 to 12 SEP 2019



CATEGORY	A	B	C	D
LPV DA		952-7/8	272 (300-7/8)	
LNAV/VNAV DA		1246-17/8	566 (600-17/8)	
LNAV MDA	1240-1	560 (600-1)	1240-1 5/8	560 (600-1 5/8)
<b>C</b> CIRCLING	1240-1	558 (600-1)	1360-2	1360-2 1/4
			678 (700-2)	678 (700-2 1/4)