

LOC/DME I-RBD 110.75 Chan 44 (Y)	APP CRS 309°	Rwy Idg TDZE 6601 660 Apt Elev 667
--	------------------------	--

ILS or LOC RWY 31

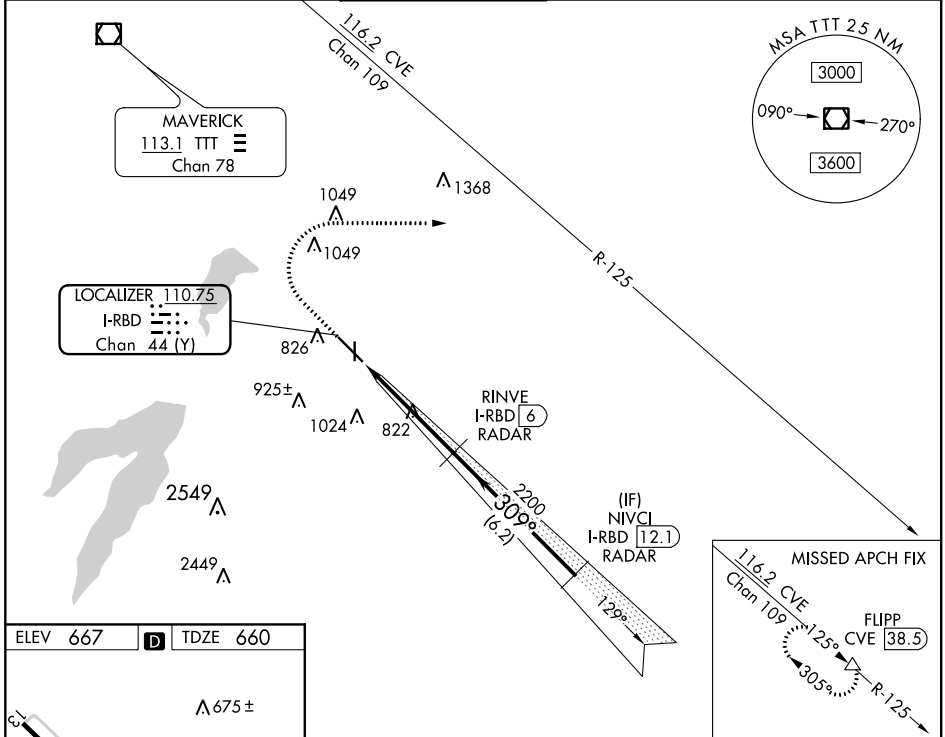
DALLAS EXECUTIVE (RBD)

RADAR required for procedure entry.
DME or RADAR required for LOC only.

⚠ Circling Rwy 13 NA at night.

MISSED APPROACH: Climb to 1200 then climbing right turn to 2500 on heading 090° and CVE R-125 to FLIPP/CVE 38.5 DME and hold.

ATIS 126.35	REGIONAL APP CON 125.2 343.65	EXECUTIVE TOWER* 127.25 (CTAF) 0	GND CON 119.475	CLNC DEL 118.625	UNICOM 122.95
-----------------------	---	--	---------------------------	----------------------------	-------------------------



ELEV 667	D	TDZE 660
----------	----------	----------

LOCALIZER 110.75 I-RBD Chan 44 (Y)

REIL Rws 13, 17, 31 and 35
MIRL Rws 13-31 and 17-35

FAF to MAP 4.7 NM

Knots	60	90	120	150	180
Min:Sec	4:42	3:08	2:21	1:53	1:34

1200	2500	CVE R-125	FLIPP	RINVE I-RBD (6) RADAR	NIVCI I-RBD (12.1) RADAR
↑	hdg 090°		△	2200	3000
*LOC only.					
I-RBD (1.2)		*I-RBD (2.4)		3000	
1.2 NM		3.5 NM		6.2 NM	
CATEGORY	A	B	C	D	
S-ILS 31	860-¾		200 (200-¾)		
S-LOC 31	1080-1 420 (500-1)		1080-1½ 420 (500-1½)		
C CIRCLING	1160-1 493 (500-1)	1220-1 553 (600-1)	1340-2 673 (700-2)	1400-2¼ 733 (800-2¼)	

GS 3.00° TCH 45

SC-2. 15 AUG 2019 to 12 SEP 2019

SC-2. 15 AUG 2019 to 12 SEP 2019