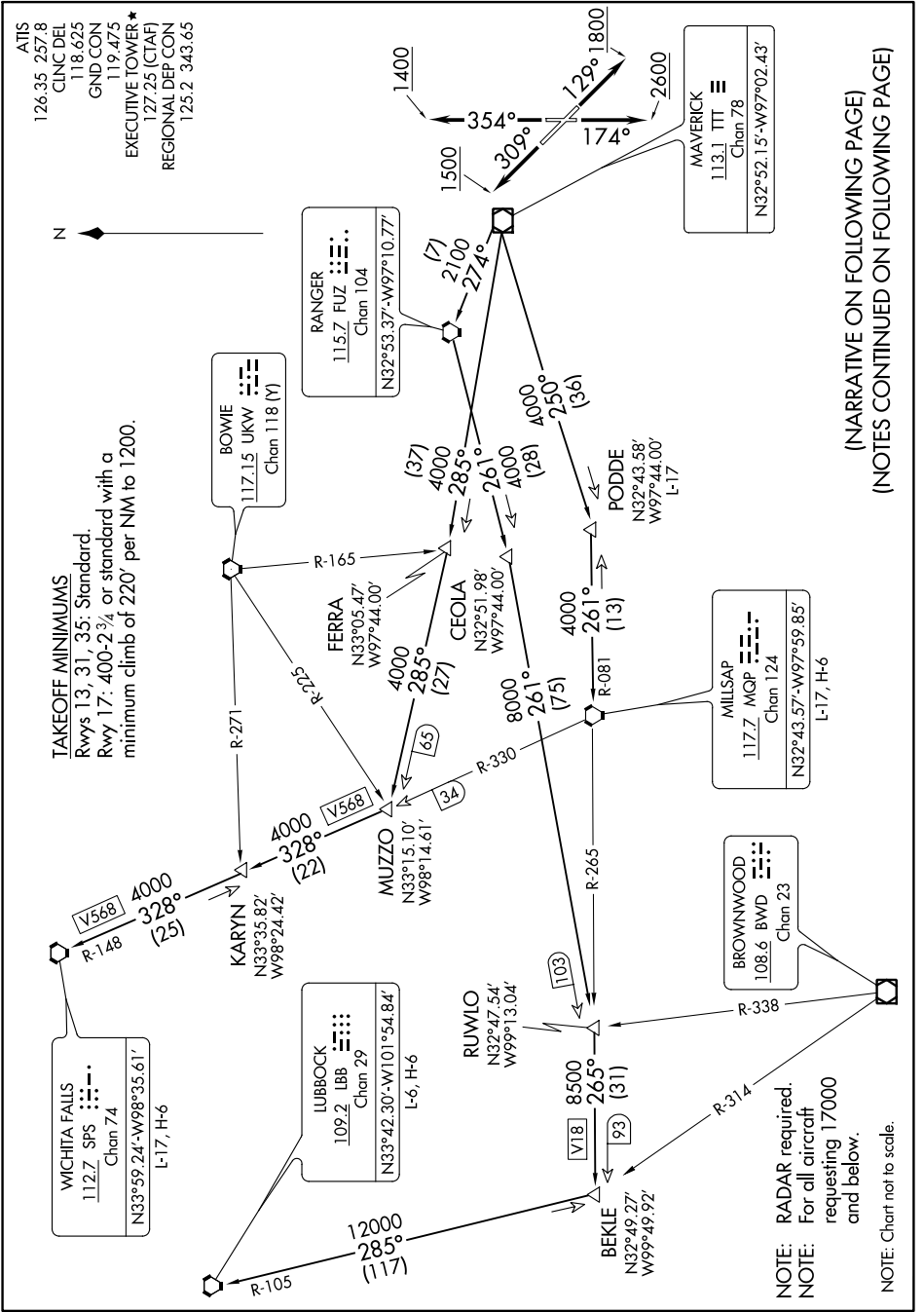


KINGDOM FIVE DEPARTURE

SC-2: 15 AUG 2019 to 12 SEP 2019



KINGDOM FIVE DEPARTURE

SC-2: 15 AUG 2019 to 12 SEP 2019

(NARRATIVE ON FOLLOWING PAGE)
(NOTES CONTINUED ON FOLLOWING PAGE)

ATIS
126.35 257.8
CLINC DEL
118.625
GND CON
119.475
EXECUTIVE TOWER★
127.25 (CTAF)
REGIONAL DEP CON
125.2 343.65

MAVERICK
113.1 TTT
Chan 78
N32°52.15'-W97°02.43'

RANGER
115.7 FUZ
Chan 104
N32°53.37'-W97°10.77'

BOWTIE
117.15 UKW
Chan 118 (V)

MILLSAP
117.7 MQP
Chan 124
N32°43.57'-W97°59.85'
L-17, H-6

BROWNWOOD
108.6 BWD
Chan 23

LUBBOCK
109.2 LBB
Chan 29
N33°42.30'-W101°54.84'
L-6, H-6

WICHITA FALLS
112.7 SPS
Chan 74
N33°59.24'-W98°35.61'
L-17, H-6

RUMLLO
N32°47.54'
W99°13.04'

BEKLE
N32°49.27'
W99°49.92'

MILLSAP
N32°43.58'
W97°44.00'
L-17

PODDE
N32°43.58'
W97°44.00'
L-17

CEOLIA
N32°51.98'
W97°44.00'

MUZZO
N33°15.10'
W98°14.61'

FERRA
N33°05.47'
W97°44.00'

RANGER
N32°53.37'-W97°10.77'

MAVERICK
N32°52.15'-W97°02.43'