

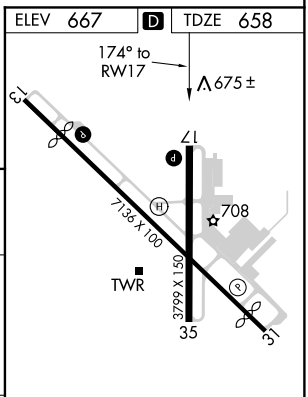
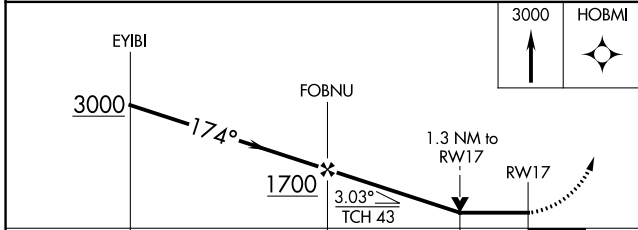
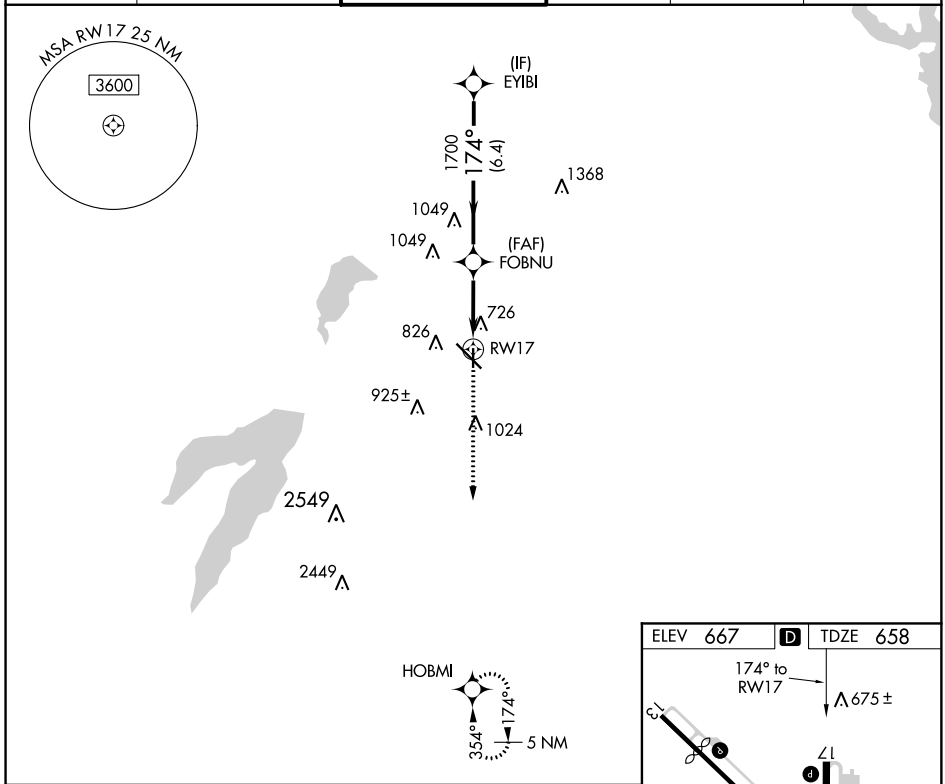
APP CRS <b>174°</b>	Rwy Idg <b>3799</b> TDZE <b>658</b> Apt Elev <b>667</b>
------------------------	---

# RNAV (GPS) RWY 17

DALLAS EXECUTIVE (R.B.D)

RNP APCH.		<p><b>▼</b> When local altimeter setting not received, use Dallas Love Field altimeter setting and increase all MDAs 60 feet and visibility Circling Cat D ¼ SM.                  Rwy 17 helicopter visibility reduction below ¾ SM NA.</p>		<p>MISSED APPROACH: Climb to 3000 direct HOBMI and hold.</p>	
-----------	--	---	--	--	--

ATIS <b>126.35</b>	REGIONAL APP CON <b>125.2 343.65</b>	EXECUTIVE TOWER * <b>127.25 (CTAF) 0</b>	GND CON <b>119.475</b>	CLNC DEL <b>118.625</b>	UNICOM <b>122.95</b>
-----------------------	---	---	---------------------------	----------------------------	-------------------------



CATEGORY	A	B	C	D
LNVA MDA	1100-1	442 (500-1)	1100-1 <sup>3</sup> / <sub>8</sub> 442 (500-1 <sup>3</sup> / <sub>8</sub> )	1100-1 <sup>1</sup> / <sub>2</sub> 442 (500-1 <sup>1</sup> / <sub>2</sub> )
<b>C</b> CIRCLING	1160-1 493 (500-1)	1220-1 553 (600-1)	1340-2 673 (700-2)	1400-2 <sup>1</sup> / <sub>4</sub> 733 (800-2 <sup>1</sup> / <sub>4</sub> )

REIL Rwy 13, 17, 31 and 35  
 MIRL Rwy 13-31 and 17-35 **0**

SC-2: 15 AUG 2019 to 12 SEP 2019

SC-2: 15 AUG 2019 to 12 SEP 2019