

APP CRS 354°	Rwy Idg 3799
	TDZE 659
	Apt Elev 660

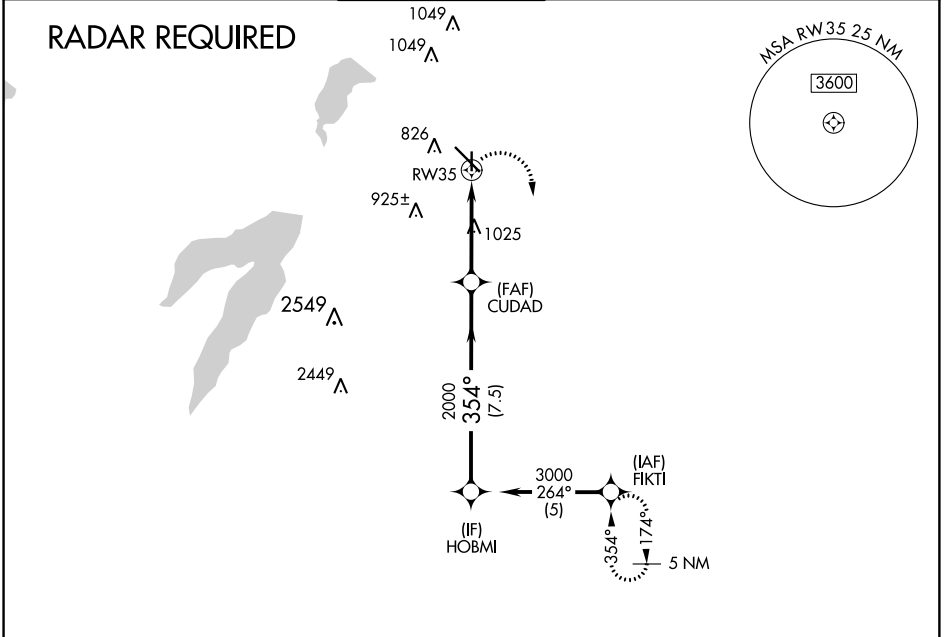
RNAV (GPS) RWY 35

DALLAS EXECUTIVE (R.B.D)

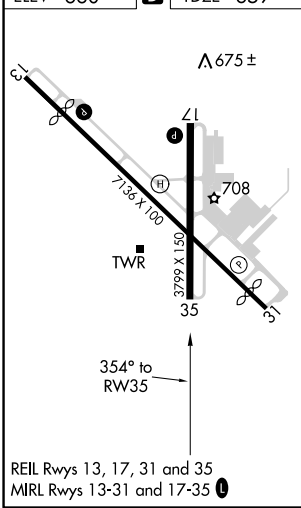
⚠ If local altimeter setting not received, use Dallas-Love Field altimeter setting and increase all MDAs 60 feet. VDP NA when using Dallas-Love Field altimeter setting. DME/DME RNP 0.3 NA.

⚠ MISSED APPROACH: Climbing right turn to 3000 direct FIKTI and hold.

ATIS 126.35	REGIONAL APP CON 125.2 343.65	EXECUTIVE TOWER ★ 127.25 (CTAF) 0	GND CON 119.475	CLNC DEL 118.625	UNICOM 122.95
-----------------------	---	---	---------------------------	----------------------------	-------------------------



ELEV 660	D	TDZE 659
----------	----------	----------



REIL Rwy 13, 17, 31 and 35
MIRL Rwy 13-31 and 17-35

	3000	FIKTI		HOBMI
			CUDDAD	
				3000
			2000	
			1.8 NM to RW35	
			2.2 NM	
			7.5 NM	
			354°	
			≤ 3.04° TCH 45	
CATEGORY	A	B	C	D
LNAV MDA	1280-1 621 (700-1)	1280-1¾ 621 (700-1¾)	1280-2 621 (700-2)	1280-2 621 (700-2)
CIRCLING	1280-1 620 (700-1)	1280-1¾ 620 (700-1¾)	1340-2¼ 680 (700-2¼)	1340-2¼ 680 (700-2¼)

SC-2: 15 AUG 2019 to 12 SEP 2019

SC-2: 15 AUG 2019 to 12 SEP 2019