

VOR/DME CVE 116.2 Chan 109	APP CRS 165°	Rwy Idg 3799 TDZE 658 Apt Elev 660
--	------------------------	---

VOR/DME RWY 17

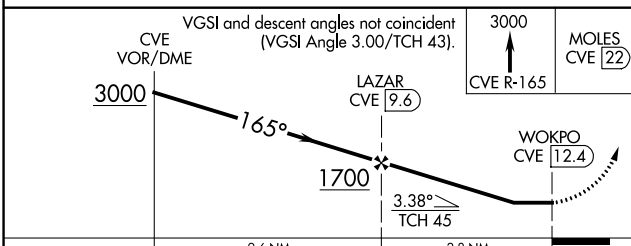
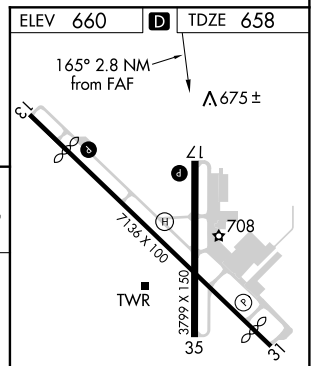
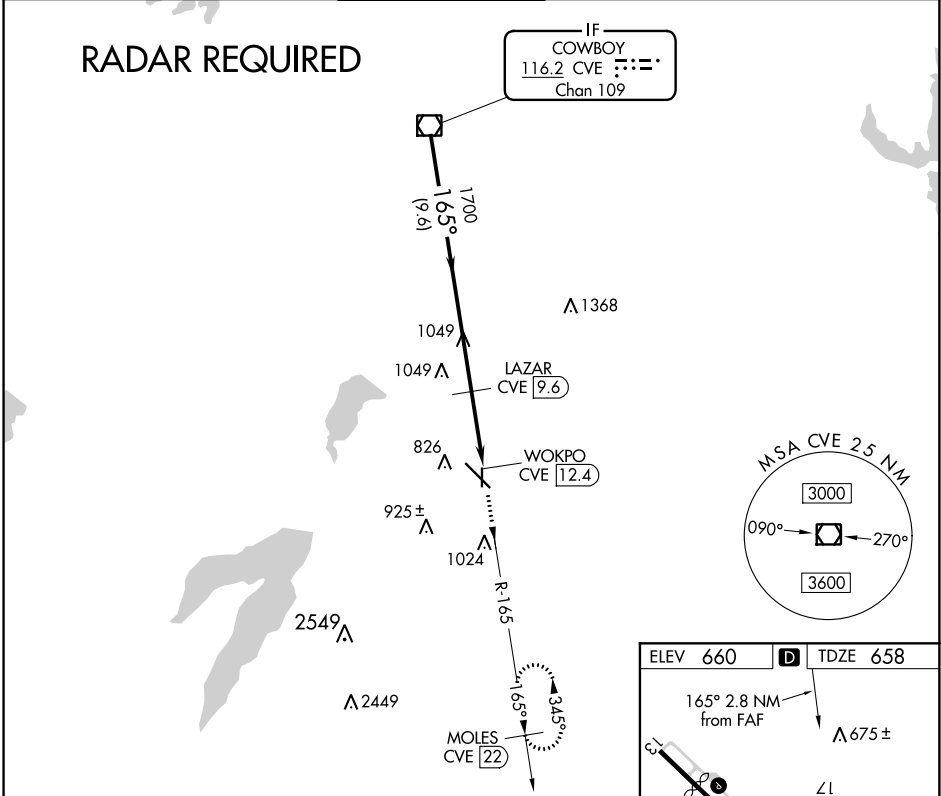
DALLAS EXECUTIVE (R.B.D)

⚠ If local altimeter setting not received, use Dallas-Love Field altimeter setting and increase all MDAs 60 feet.

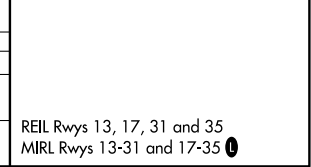
MISSED APPROACH: Climb to 3000 via CVE R-165 to MOLES 22 DME and hold.

ATIS 126.35	REGIONAL APP CON 125.2 343.65	EXECUTIVE TOWER * 127.25 (CTAF)	GND CON 119.475	CLNC DEL 118.625	UNICOM 122.95
-----------------------	---	---	---------------------------	----------------------------	-------------------------

RADAR REQUIRED



CATEGORY	A	B	C	D
S-17	1080-1	422 (500-1)	1080-1¼	422 (500-1¼)
CIRCLING	1160-1	500 (500-1)	1160-1½	1340-2¼ 680 (700-2¼)



SC-2: 15 AUG 2019 to 12 SEP 2019

SC-2: 15 AUG 2019 to 12 SEP 2019