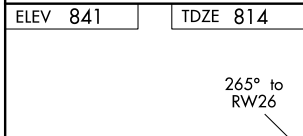
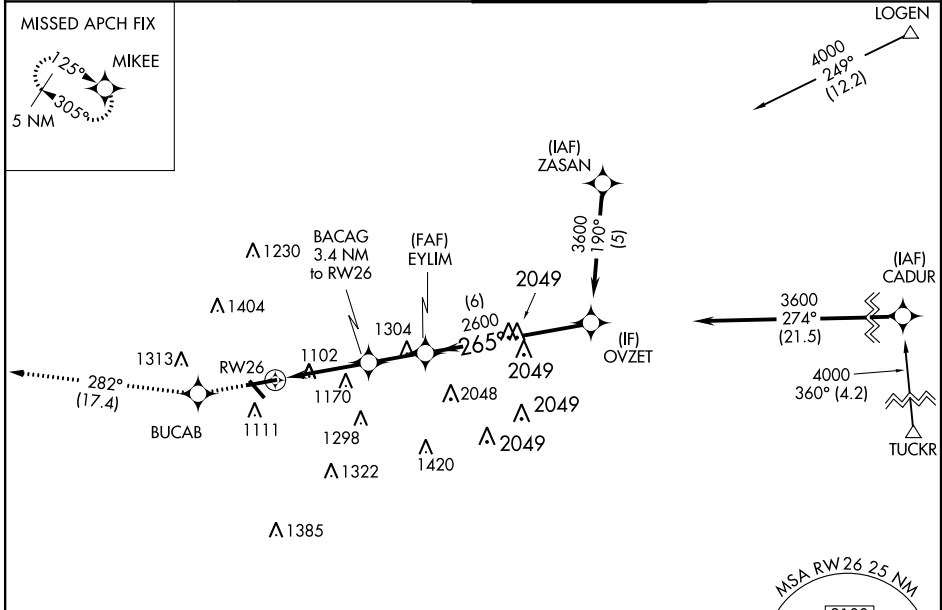


WAAS CH 65930 W26A	APP CRS 265°	Rwy Idg TDZE Apt Elev	5797 814 841
--	------------------------	-----------------------------	---

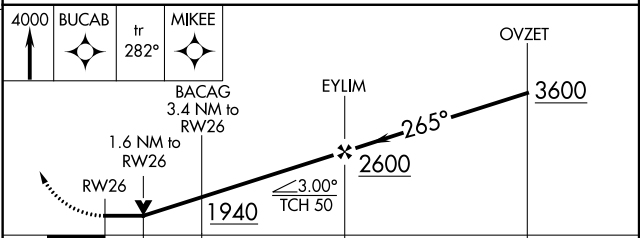
RNAV (GPS) RWY 26

FULTON COUNTY AIRPORT-BROWN FIELD (F'TY)

RNP APCH.		MISSED APPROACH: Climb to 4000 direct BUCAB and on track 282° to MIKEE and hold.	
<p>▼ Circling Rwy 14, 32 NA at night. ▲ Rwy 26 helicopter visibility reduction below ¾ SM NA.</p>		ATIS 120.175	ATLANTA APP CON 121.0 268.7
		FULTON COUNTY TOWER 118.45 257.8	GND CON 121.7 348.6



ELEV 841	TDZE 814
HIRL Rwy 8-26 MIRL Rwy 14-32 REIL Rwy 14, 26 and 32	



CATEGORY	A	B	C	D
LP MDA	1360-1	546 (600-1)	1360-1½	546 (600-1½)
LNAV MDA	1480-1	666 (700-1)	1480-1⅞	666 (700-1⅞)
C CIRCLING	1480-1 639 (700-1)	1520-1 679 (700-1)	1740-2¾ 899 (900-2¾)	1740-3 899 (900-3)

SE-4, 15 AUG 2019 to 12 SEP 2019

SE-4, 15 AUG 2019 to 12 SEP 2019