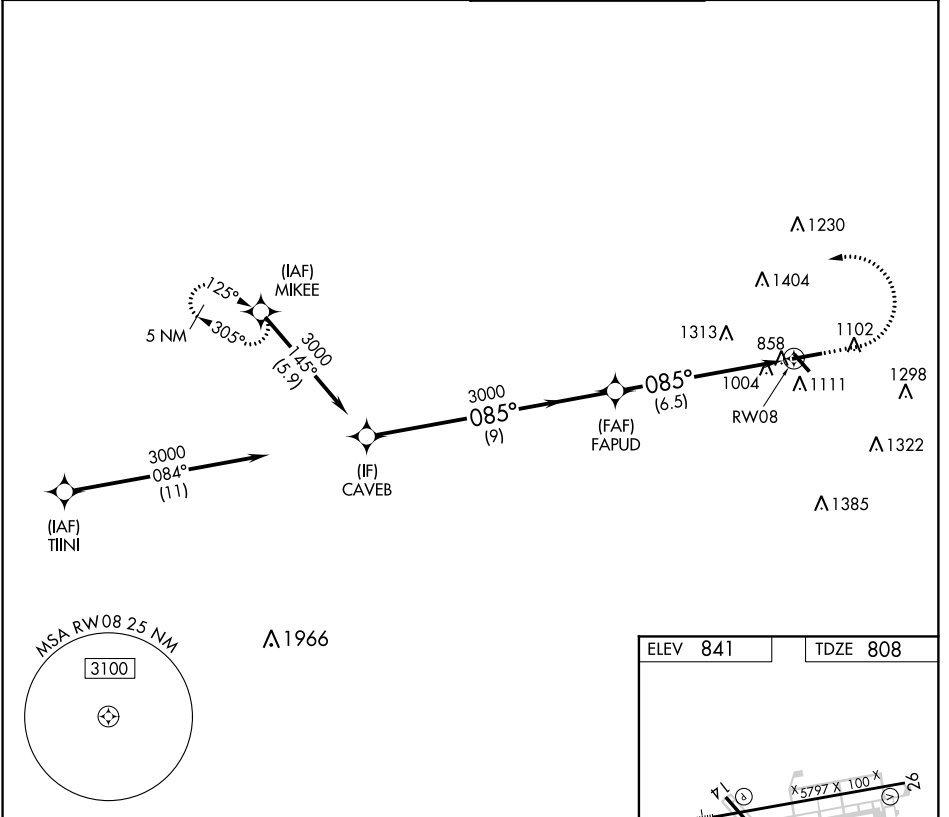


APP CRS	Rwy Idg	5797
085°	TDZE	808
	Apt Elev	841

RNAV (RNP) Z RWY 8

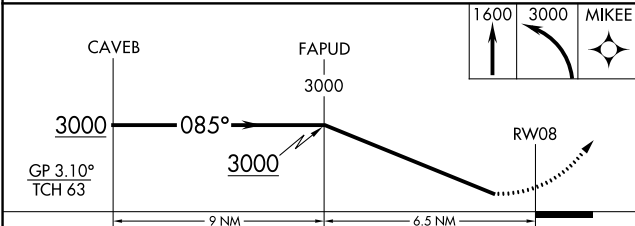
FULTON COUNTY AIRPORT-BROWN FIELD (F'TY)

For uncompensated Baro-VNAV systems, procedure NA below -8°C (18°F) or above 44°C (111°F). GPS required. For inop ALS, increase all Cats visibility to 1 1/4 SM.	MALSR 	MISSED APPROACH: Climb to 1600 then climbing left turn to 3000 direct MIKEE and hold. (Do not exceed 210K until 1600).	
		ATIS 120.175	ATLANTA APP CON 121.0 268.7



SE-4, 15 AUG 2019 to 12 SEP 2019

SE-4, 15 AUG 2019 to 12 SEP 2019



ELEV 841	TDZE 808
----------	----------

Diagram showing the RNP Z RWY 8 path overlaid on an aerial view of RWY 8. The path starts at the (IAF) TIINI, passes through CAVEB, FAPUD, and RW08, and ends at MIKEE. Key altitudes and distances are marked. A TWIR 1013 and star 969 are also shown.

CATEGORY	A	B	C	D
RNP 0.30 DA		1363-1 3/8	555 (600-1 3/8)	

AUTHORIZATION REQUIRED

HIRL Rwy 8-26
 MIRL Rwy 14-32
 REIL Rwys 14, 26 and 32