

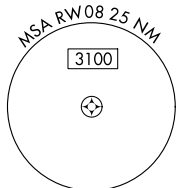
WAAS CH 65804 W08A	APP CRS 085°	Rwy ldg TDZE Apt Elev	5797 808 841
--	------------------------	-----------------------------	---

RNAV (GPS) Y RWY 8

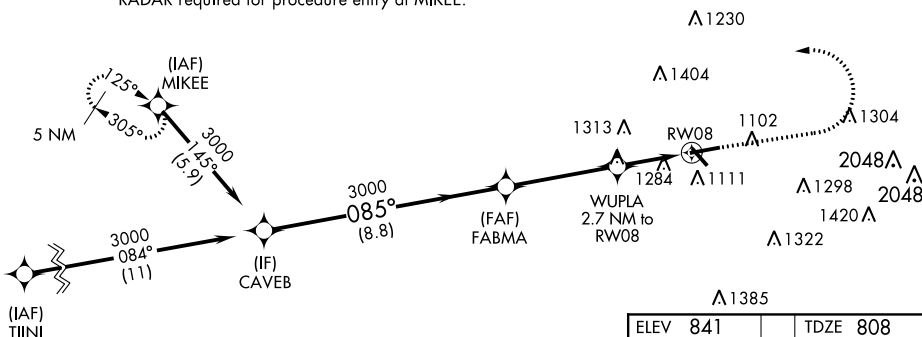
FULTON COUNTY AIRPORT-BROWN FIELD (F'TY)

RNP APCH.	MALSR	MISSED APPROACH: Climb to 1600 then climbing left turn to 3000 direct MIKEE and hold.
<p>⚠ Circling Rwy 14, 32 NA at night. For uncompensated Baro-VNAV systems, LNAV/VNAV NA below -9°C (16°F) or above 54°C (130°F). Rwy 8 helicopter visibility reduction below ¾ SM NA. For inoperative ALS, increase LNAV Cat A/B visibility to 1 SM and Cat C/D to 2 SM. Inoperative table does not apply to LPV and LNAV/VNAV DA.</p>		

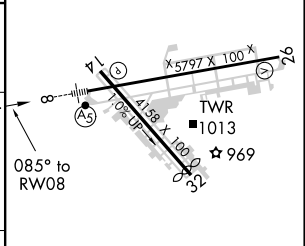
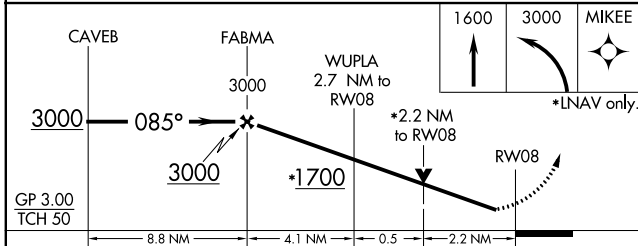
ATIS 120.175	ATLANTA APP CON 121.0 268.7	FULTON COUNTY TOWER 118.45 257.8	GND CON 121.7 348.6
------------------------	---------------------------------------	--	-------------------------------



RADAR required for procedure entry at MIKEE.



ELEV 841	TDZE 808
----------	----------



CATEGORY	A	B	C	D
LPV DA		1058-¾	250 (300-¾)	
LNAV/VNAV DA		1653-2½	845 (900-2½)	
LNAV MDA	1540-¾	732 (800-¾)	1540-1⅝	732 (800-1⅝)
CIRCLING	1540-1	699 (700-1)	1740-2¾ 899 (900-2¾)	1740-3 899 (900-3)

HIRL Rwy 8-26
MIRL Rwy 14-32
REIL Rwy 14, 26 and 32

SE-4, 15 AUG 2019 to 12 SEP 2019

SE-4, 15 AUG 2019 to 12 SEP 2019