

WAAS CH 82735 W21A	APP CRS 218°	Rwy Idg TDZE Apt Elev	7398 3649 3661
--	------------------------	-----------------------------	---

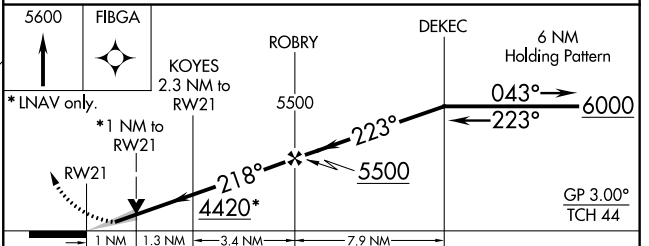
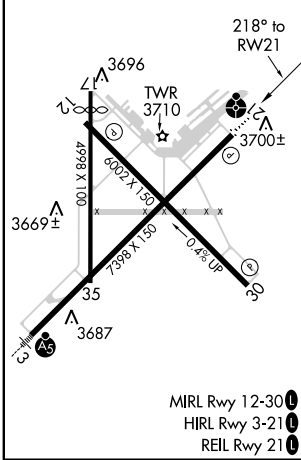
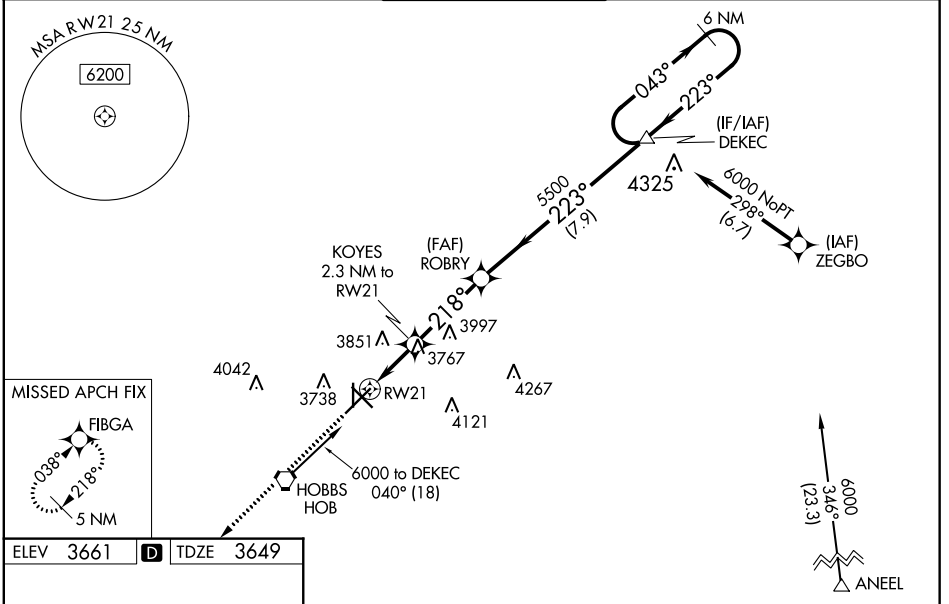
RNAV (GPS) RWY 21

LEA COUNTY RGNL (HOB)

⚠ For uncompensated Baro-VNAV systems, LNAV/VNAV NA below -22°C (-7°F) or above 53°C (128°F). DME/DME-RNP-0.3 NA. Inoperative table does not apply to LNAV/VNAV all Cats and LNAV Cats C/D. When local altimeter setting not received, use Carlsbad altimeter setting and increase all DA 281 feet and all MDA 300 feet, increase LPV and LNAV/VNAV all Cats visibility 7/8 mile, LNAV Cats C/D and Circling Cat C visibility 3/4 mile, and Circling Cat D visibility 1/2 mile. Baro-VNAV and VDP NA when using Carlsbad altimeter setting. For inoperative ODALS when using Carlsbad altimeter setting, increase LPV and LNAV/VNAV all Cats and LNAV Cats C/D vis to 1 7/8 miles. Rwy 17 helicopter visibility reduction below 1 SM NA. Circling Rwy 17 NA at night.

ODALS
● ...
MISSED APPROACH:
Climb to 5600 direct FIBGA and hold.

ATIS 119.75	FORT WORTH CENTER 133.1 298.95	HOBBS TOWER ★ 120.65 (CTAF) 0 317.4	GND CON 121.9	UNICOM 122.95
-----------------------	--	--	-------------------------	-------------------------



CATEGORY	A	B	C	D
LPV DA		3899-3/4	250 (300-3/4)	
LNAV/VNAV DA		3899-3/4	250 (300-3/4)	
LNAV MDA	4020-3/4	371 (400-3/4)	4020-1	371 (400-1)
CIRCLING	4120-1 459 (500-1)	4160-1 499 (500-1)	4440-2 1/4 779 (800-2 1/4)	4440-2 1/2 779 (800-2 1/2)

SW-1, 15 AUG 2019 to 12 SEP 2019

SW-1, 15 AUG 2019 to 12 SEP 2019