

VORTAC HOB 111.0 Chan 47	APP CRS 212°	Rwy Idg 7398 TDZE 3649 Apt Elev 3661
---------------------------------------	------------------------	---

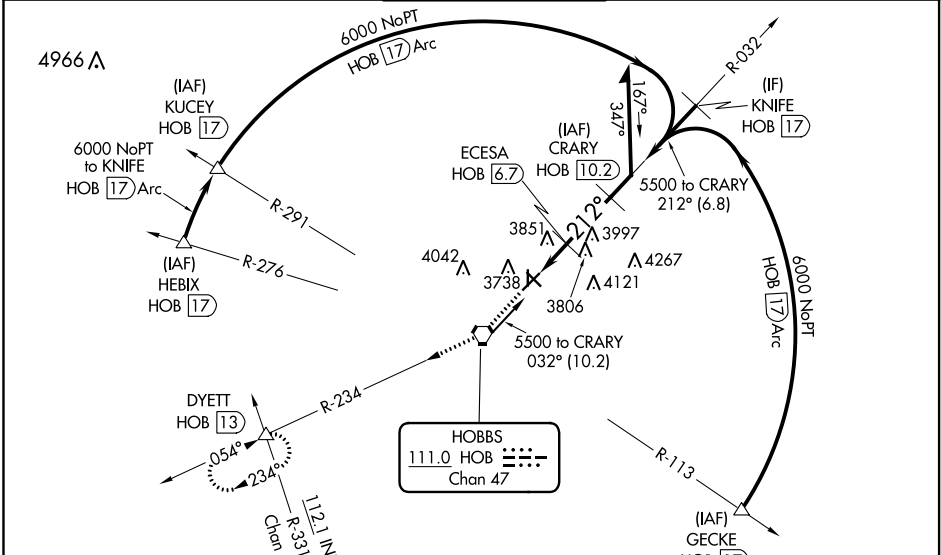
VOR or TACAN RWY 21

LEA COUNTY RGNL (HOB)

⚠ VDP NA with Carlsbad altimeter setting. When local altimeter setting not received, use Carlsbad altimeter setting and increase all MDA 300 feet; increase S-21 Cat C/D visibility 3/4 mile; increase Circling Cat C visibility 3/4 mile; increase Circling Cat D visibility 1/2 mile. Inoperative table does not apply. Straight-in minimums NA when using Carlsbad altimeter setting. Rwy 17 helicopter visibility reduction below 1 SM NA. Circling Rwy 17 NA at night. DME required.

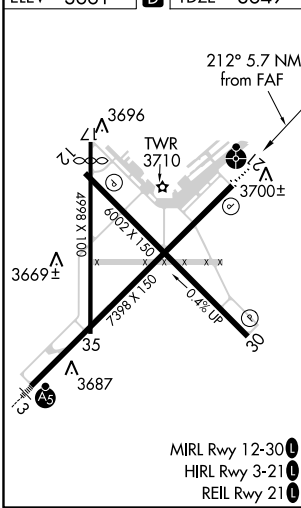
ODALS MISSED APPROACH: Climb to 6000 direct HOB VORTAC then via HOB VORTAC R-234 to DYETT INT/HOB 13 DME and hold.

ATIS 119.75	FORT WORTH CENTER 133.1 298.95	HOBBBS TOWER ★ 120.65 (CTAF) 317.4	GND CON 121.9	UNICOM 122.95
-----------------------	--	--	-------------------------	-------------------------



DME REQUIRED

ELEV 3661	D	TDZE 3649
-----------	----------	-----------



6000 HOB	DYETT HOB R-234	ECESA HOB 6.7	CRARY HOB 10.2	Remain within 10 NM
HOB 4.5	HOB 5.8	TCH 44	5500	5500
-1.3 NM		-0.9 NM		-3.5 NM
4400*	5500	5500	5500	5500
*4700 when using Carlsbad altimeter setting.				
CATEGORY	A	B	C	D
S-21	4120-1	471 (500-1)	4120-1 1/4 471 (500-1 1/4)	4120-1 1/2 471 (500-1 1/2)
C CIRCLING	4120-1 459 (500-1)	4160-1 499 (500-1)	4440-2 1/4 779 (800-2 1/4)	4440-2 1/2 779 (800-2 1/2)

SW-1, 15 AUG 2019 to 12 SEP 2019

SW-1, 15 AUG 2019 to 12 SEP 2019