

MARIETTA, GEORGIA

ILS or LOC RWY 11

LOC I-DJR 109.7	APCH CRS 109°	Rwy Idg 10,002 TDZE 1068 Arprt Elev 1068
---------------------------	-------------------------	---

AL-959 [USAF]

DOBBINS ARB (KMGE)

* When ALS inop, increase RVR to 55 and vis to 1 mile.
 ** When ALS inop, increase CAT AB RVR to 55 and vis to 1 mile, CAT CDE vis to 1½ miles.

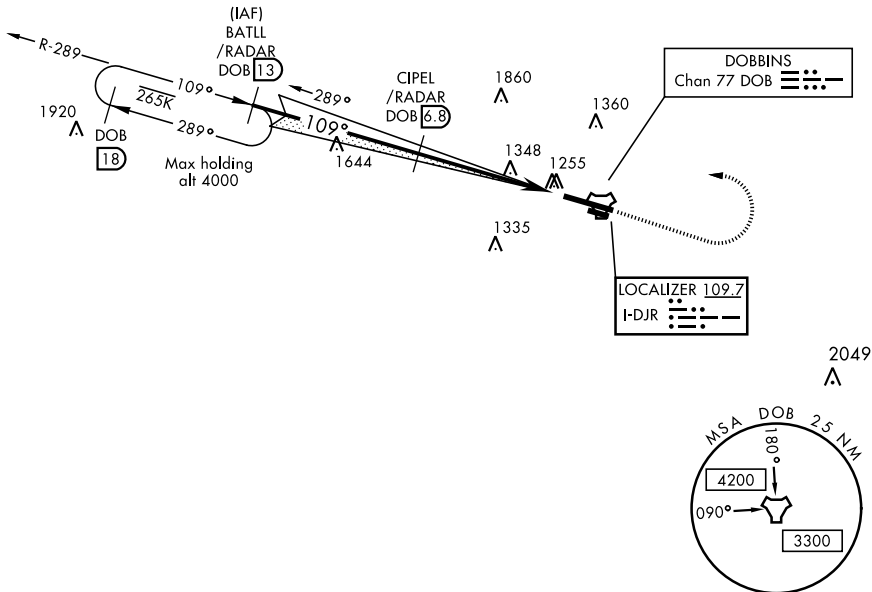
 ALSF-1

 † MISSED APPROACH: Climb to 2000 track 109°, then climbing left turn to 3000, intercept the DOB R-289 to BATLL and hold.

ATIS ★ 269.5	ATLANTA APP CON 121.0 268.7	DOBBINS TOWER ★ 120.75 370.875	GND CON 125.3 275.8	ASR
------------------------	---------------------------------------	--	-------------------------------	-----

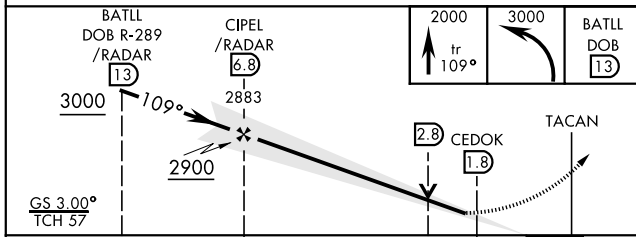
*** Circling not authorized N of Rwy 11-29 for CAT DE aircraft, Circling to assault strip not authorized all CAT.

† Missed approach requires use of RNAV or ATC RADAR monitoring.

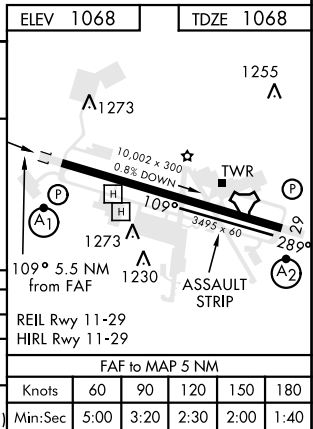


DME REQUIRED

EMERG SAFE ALT 100 NM 7700



	ELEV 1068	TDZE 1068			
CATEGORY	A	B	C	D	E
S-ILS 11*	1401/40		333	(400-¾)	
S-LOC 11**	1600/40	532 (600-¾)	1600/55	532	(600-1)
***	1660-1	1700-1¾	1700-2	1700-2¼	1700-2½
CIRCLING	592 (600-1)	632 (700-1¾)	632 (700-2)	632 (700-2¼)	632 (700-2½)



MARIETTA, GEORGIA

33°55'N-84°31'W

DOBBINS ARB (KMGE)

Amdt 5 13SEP18

ILS or LOC RWY 11

SE-4, 15 AUG 2019 to 12 SEP 2019

SE-4, 15 AUG 2019 to 12 SEP 2019