

APCH CRS 109°	Rwy Idg 10,002
	TDZE 1068
	Arpt Elev 1068

AL-959 (USAF)

DOBBINS ARB (KMGE)

⚠ * When ALS inop, increase CAT AB RVR to 55 and vis to 1 mile, CAT CDE vis to 1 1/2 miles.
 ** Circling NA N of Rwy 11-29 for CAT DE aircraft. Circling to assault strip NA all CAT.

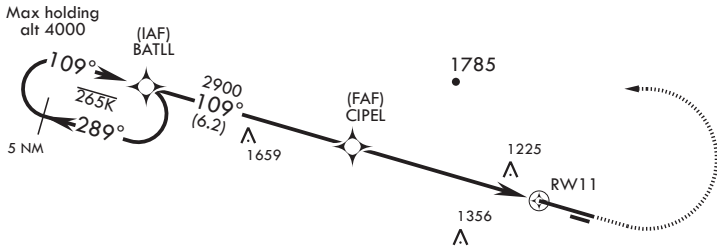


† MISSED APPROACH: Climb to 2000 then climbing left turn to 3000 direct BATLL and hold.

ATIS 269.5	ATLANTA APP CON/DEP CON 121.0 268.7	TOWER 120.75 370.875	GND CON 125.3 275.8	ASR
----------------------	---	--------------------------------	-------------------------------	-----

DME/DME RNP-0.3 NA
RNP APCH

† Missed approach requires use of RNAV or ATC RADAR monitoring.



SE-4, 15 AUG 2019 to 12 SEP 2019

SE-4, 15 AUG 2019 to 12 SEP 2019

EMERG SAFE ALT 100 NM 7700

		2000 3000 BATLL ELEV 1068 TDZE 1068			
CATEGORY	A	B	C	D	E
LNAV MDA*	1600/40 532 (600-3/4)		1600/55	532	(600-1)
C CIRCLING**	1660-1	592 (600-1)	1700-1 3/4 632 (700-1 3/4)	1700-2 632 (700-2)	1700-2 1/4 632 (700-2 1/4)

