

APCH CRS	Rwy Idg	10,002
289°	TDZE	1014
	Arpt Elev	1068

AL-959 (USAF)

DOBBINS ARB (KMGE)

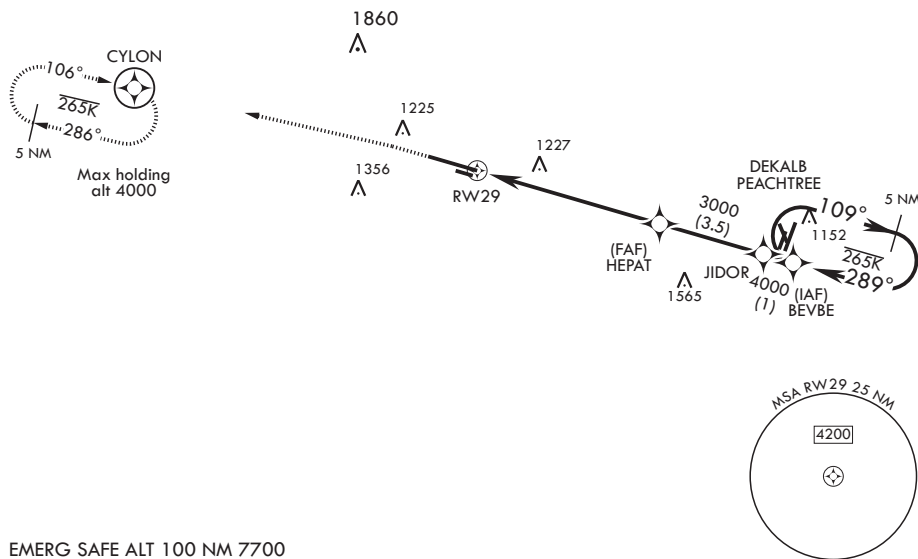
**⚠** \* When ALS inop, increase CAT AB RVR to 55 and vis to 1 mile, CAT CDE vis to 1 1/2 miles.  
 \*\* Circling not authorized N of Rwy 11-29 for CAT DE. Circling to assault strip not authorized all CAT.

**SALS** **⚠ MISSED APPROACH:** Climb to 2000 then climbing left turn to 3000 direct CYLON and hold.

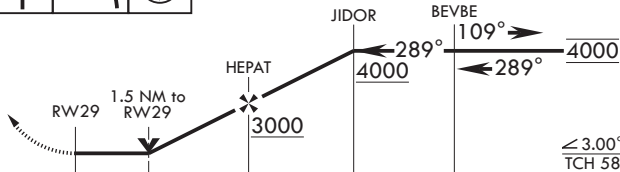
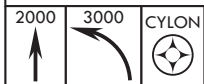
ATIS <b>269.5</b>	ATLANTA APP CON/DEP CON <b>121.0 268.7</b>	TOWER <b>120.75 370.875</b>	GND CON <b>125.3 275.8</b>	ASR
----------------------	---	--------------------------------	-------------------------------	-----

DME/DME RNP-0.3 NA  
RNP APCH

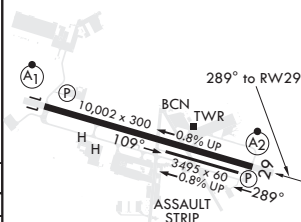
⚠ MISSED APPROACH requires use of RNAV or ATC RADAR monitoring.



EMERG SAFE ALT 100 NM 7700



ELEV 1068 TDZE 1014



CATEGORY	A	B	C	D	E
LNAV MDA*	1540/40 526 (500-3/4)		1540-1 1/4 526		(500-1 1/4)
<b>C</b> CIRCLING**	1660-1 592 (600-1)		1700-1 3/4 632 (700-1 3/4)	1700-2 632 (700-2)	1700-2 1/4 632 (700-2 1/4)

HIRL all Rwys  
REIL Rwys 11, 29

SE-4, 15 AUG 2019 to 12 SEP 2019

SE-4, 15 AUG 2019 to 12 SEP 2019