

# TACAN RWY 11

TACAN Chan <b>77</b>	APCH CRS <b>106°</b>	Rwy Idg TDZE <b>1068</b> Arprt Elev <b>1068</b>	AL-959 [USAF]	DOBBINS ARB (KMGE)
-------------------------	-------------------------	---	---------------	--------------------

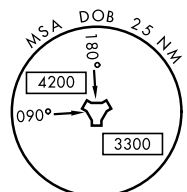
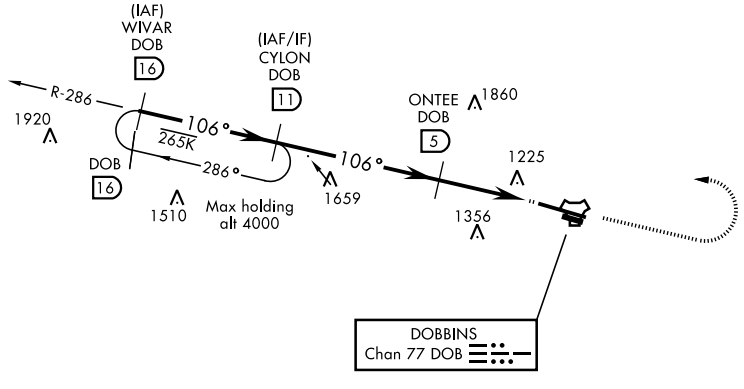
▼ \* When ALS inop, increase CAT AB RVR to 55 and vis to 1 mile, CAT CDE vis to 1½ miles.  
 \*\* Circling not authorized N of Rwy 11-29 for CAT D,E aircraft. Circling to assault strip not authorized all CAT.



† MISSED APPROACH: Climb to 2000 on track 106°, then climbing left turn to 3000, intercept DOB R-286 to CYLON and hold.

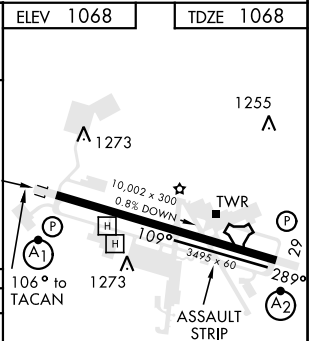
ATIS ★ <b>269.5</b>	ATLANTA APP CON <b>121.0 268.7</b>	DOBBINS TOWER ★ <b>120.75 370.875</b>	GND CON <b>125.3 275.8</b>	ASR
------------------------	---------------------------------------	--	-------------------------------	-----

† Missed approach requires use of RNAV or ATC RADAR monitoring.



EMERG SAFE ALT 100 NM 7700

WIVAR R-286 (16) → CYLON (11) → ONTEE (5) → KAMSE (1.8) → TACAN  
 Altitudes: 3000, 2300, 2000, 3000  
 Distances: 3.2 NM, .5 NM  
 Angle: 2.97° TCH 56



CATEGORY	A	B	C	D	E
S-11*	1600/40	532 (600-¾)	1600/55	532 (600-1)	
CIRCLING**	1660-1	592 (600-1)	1700-1¾ 632 (700-1¾)	1700-2 632 (700-2)	1700-2¼ 632 (700-2¼)

# TACAN RWY 11

SE-4, 15 AUG 2019 to 12 SEP 2019

SE-4, 15 AUG 2019 to 12 SEP 2019