

MARIETTA, GEORGIA

TACAN RWY 29

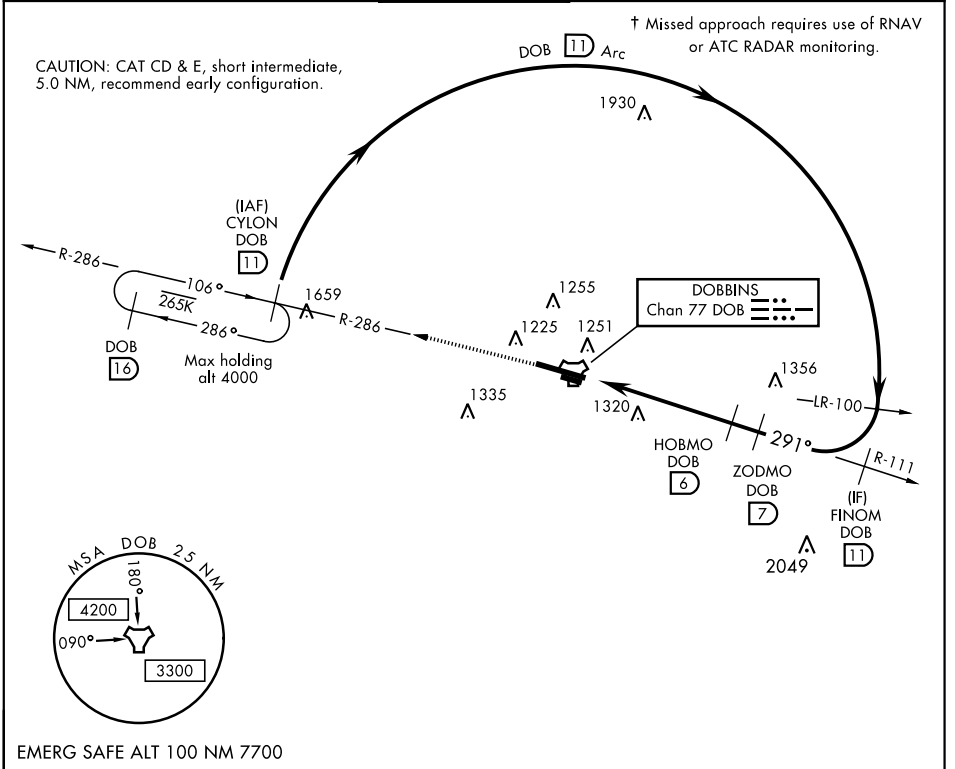
TACAN Chan 77	APCH CRS 291°	Rwy ldg 10,002 TDZE 1014 Arpt Elev 1068	AL-959 [USAF]	DOBBINS ARB (KMGE)
-------------------------	-------------------------	--	---------------	--------------------

▽ * When ALS inop, increase CAT AB RVR to 55 and vis to 1 mile, CAT CDE vis to 1¼ miles.
 ** Circling not authorized N of Rwy 11-29 for CAT DE aircraft. Circling to assault strip not authorized all CAT.

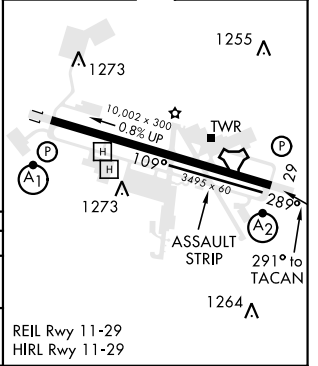
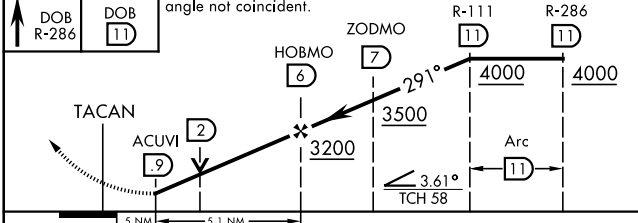
SALS **A2**

† MISSED APPROACH: Climb to 3000 via DOB R-286 to CYLON and hold.

ATIS ★ 269.5	ATLANTA APP CON 121.0 268.7	DOBBINS TOWER ★ 120.75 370.875	GND CON 125.3 275.8	ASR
------------------------	---------------------------------------	--	-------------------------------	-----



3000 ↑ DOB R-286	CYLON DOB 11	VGSI and descent angle not coincident.	FINOM R-111	CYLON R-286	ELEV 1068	TDZE 1014
------------------------	--------------	--	-------------	-------------	-----------	-----------



CATEGORY	A	B	C	D	E
S-29 *	1580/40	566 (600-¾)	1580-1¾	566	(600-1¾)
C CIRCLING **	1660-1	592 (600-1)	1700-1¾ 632 (700-1¾)	1700-2 632 (700-2)	1700-2¼ 632 (700-2¼)

MARIETTA, GEORGIA 33°55'N-84°31'W DOBBINS ARB (KMGE)

TACAN RWY 29

Amdt 6 13SEP18

SE-4, 15 AUG 2019 to 12 SEP 2019

SE-4, 15 AUG 2019 to 12 SEP 2019