

LOC I-OFK 111.5	APP CRS 014°	Rwy Idg 5801	TDZE 1573
		Apt Elev 1573	

ILS or LOC RWY 1

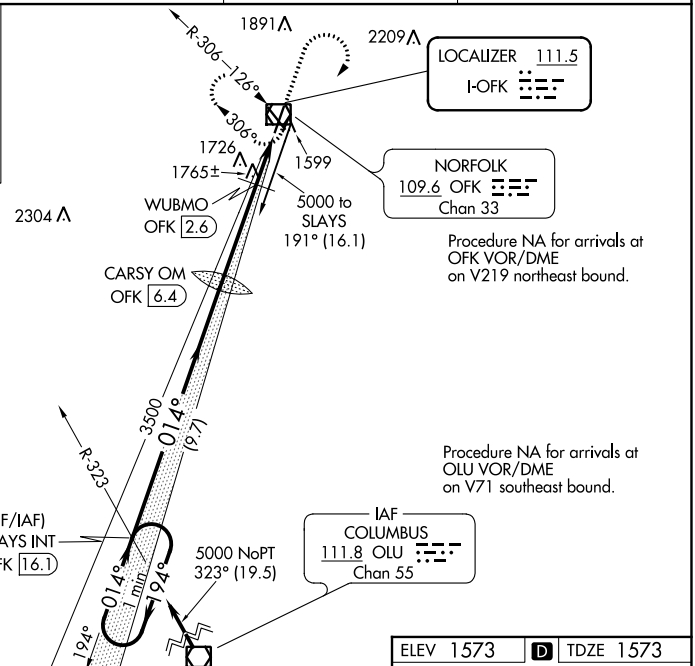
NORFOLK RGNL/KARL STEFAN MEMORIAL FIELD (OFK)

*DME from OFK VOR/DME.	MALS	MISSED APPROACH: Climb to 3000 then climbing right turn to 4000 direct OFK VOR/DME and hold.
------------------------	------	--

ASOS 119.025	MINNEAPOLIS CENTER 125.025 235.625	COLUMBUS RADIO 122.15	UNICOM 122.7 (CTAF)
------------------------	--	---------------------------------	-------------------------------

ALTERNATE MISSED APCH FIX

COLUMBUS OLU
111.8
Chan 55



2704 Δ

2304 Δ

MSA OFK 25 NM

4800

(IF/IAF) SLAYS INT OFK 16.1

5000 NoPT 323° (19.5)

3500 014° (19.7)

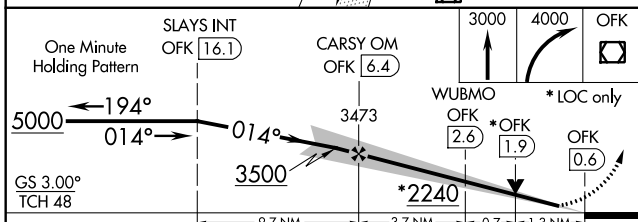
R-306-126°

R-323

194°

014°

94°



ELEV 1573		TDZE 1573
-----------	--	-----------

1567 Δ

1569 Δ

1598

1613 Δ

1625 Δ

REIL Rwy 32

HIRL Rwy 1-19

MIRL Rwy 14-32

014° 5.7 NM from FAF

0.43 UP

0.7 UP

580 X 100

580 X 100

FAF to MAP 5.7 NM

Knots	60	90	120	150	180
Min:Sec	5:42	3:48	2:51	2:17	1:54

CATEGORY	A	B	C	D
S-ILS 1	1773-½ 200 (200-½)			
S-LOC 1	2240-½	667 (700-½)	2240-1¼	667 (700-1¼)
CIRCLING	2240-1	667 (700-1)	2260-2	2360-2½
			687 (700-2)	787 (800-2½)
WUBMO FIX MINIMUMS*				
S-LOC 1	2020-½	447 (500-½)	2020-7/8	447 (500-7/8)
CIRCLING	2080-1	507 (600-1)	2260-2	2360-2½
			687 (700-2)	787 (800-2½)

ILS or LOC RWY 1

NC-2, 15 AUG 2019 to 12 SEP 2019

NC-2, 15 AUG 2019 to 12 SEP 2019