

WAAS CH <b>50120</b> <b>W01A</b>	APP CRS <b>014°</b>	Rwy Idg TDZE Apt Elev	<b>5801</b> <b>1573</b> <b>1573</b>
--	------------------------	-----------------------------	---

# RNAV (GPS) RWY 1

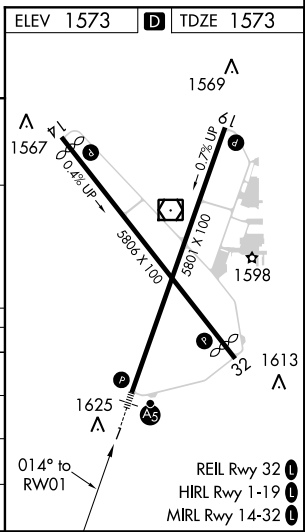
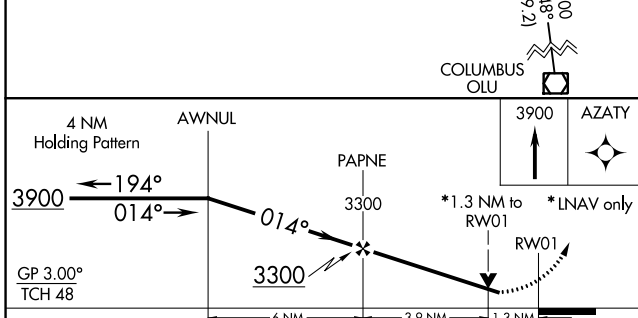
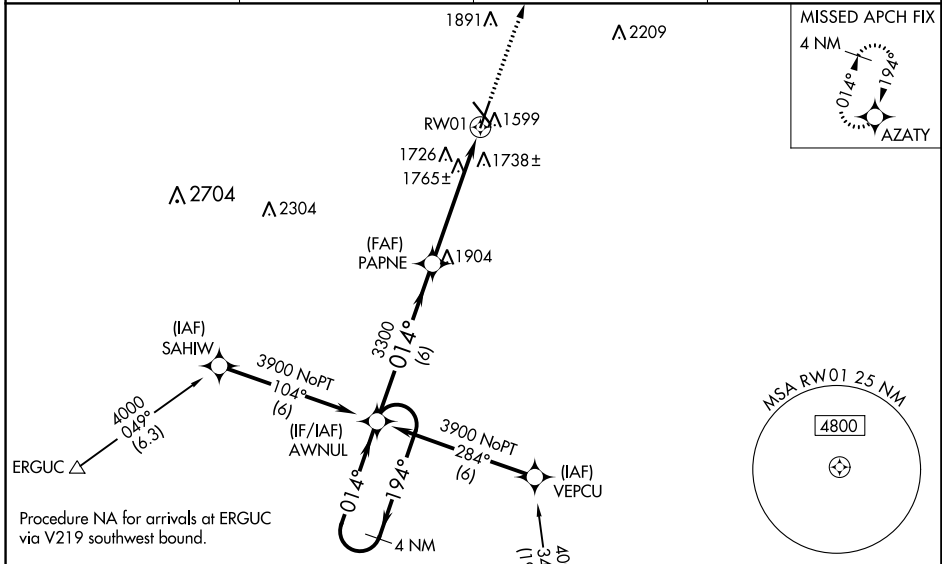
NORFOLK RGNL/KARL STEFAN MEMORIAL FIELD (OFK)

**⚠** For inoperative MALSRS, increase LPV all Cats visibility to 1 1/4, and LNAV Cat A/B visibility to 1.  
**⚠** For uncompensated Baro-VNAV systems, LNAV/VNAV NA below -18°C (0°F) or above 54°C (130°F). DME/DME RNP-0.3 NA. Visibility reduction by helicopters NA. When local altimeter setting not received, use Wayne altimeter setting and increase all DA/MDA 80 feet, increase LPV and LNAV/VNAV all Cats visibility 1/4 mile and LNAV Cat C visibility 1/2 mile. Baro-VNAV and VDP NA when using Wayne altimeter setting. For inoperative MALSRS when using Wayne altimeter setting, increase LPV all Cats visibility to 1 1/2.

**MALSRS**

**MISSED APPROACH:**  
Climb to 3900 direct AZATY and hold.

ASOS <b>119.025</b>	MINNEAPOLIS CENTER <b>125.025 235.625</b>	COLUMBUS RADIO <b>122.15</b>	UNICOM <b>122.7 (CTAF)</b>
------------------------	--	---------------------------------	-------------------------------



CATEGORY	A	B	C	D
LPV DA	1950-3/4	377 (400-3/4)		NA
LNAV/VNAV DA	2100-1 1/4	527 (600-1 1/4)		NA
LNAV MDA	2020-3/4	447 (500-3/4)		NA
CIRCLING	2080-1	507 (600-1)	2080-1 1/2 507 (600-1 1/2)	NA

NC-2, 15 AUG 2019 to 12 SEP 2019

NC-2, 15 AUG 2019 to 12 SEP 2019