

WAAS CH 56220 W19A	APP CRS 194°	Rwy Idg TDZE Apt Elev	5801 1543 1573
--	------------------------	-----------------------------	---

RNAV (GPS) RWY 19

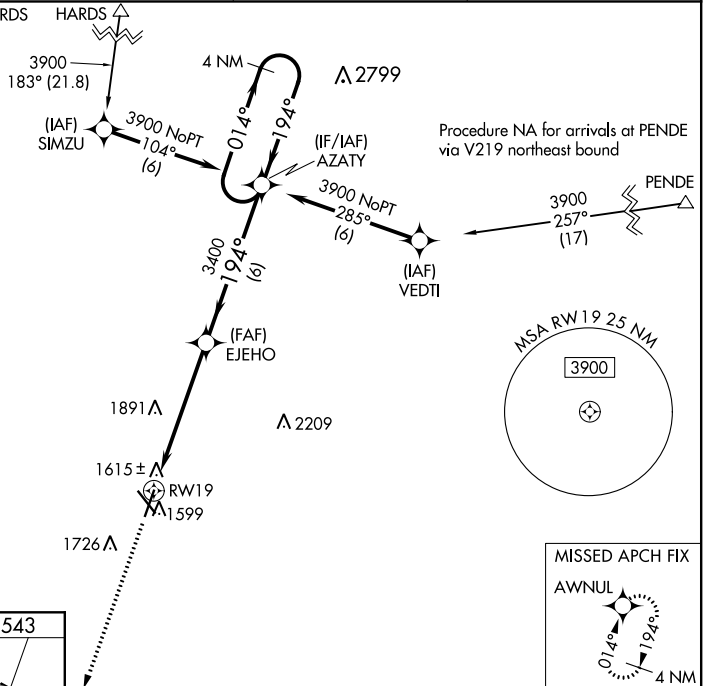
NORFOLK RGNL/KARL STEFAN MEMORIAL FIELD (OFK)

⚠ Baro-VNAV NA when using Wayne altimeter setting. For uncompensated Baro-VNAV systems, LNAV/VNAV NA below -18°C (0°F) or above 46°C (114°F). DME/DME RNP-0.3 NA.
⚠ Visibility reduction by helicopters NA. When local altimeter setting not received, use Wayne altimeter setting and increase all DA/MDA 80 feet, increase LPV and LNAV/VNAV all Cats visibility ¼ mile, LNAV/Circling Cat C and D visibility ¼ mile.

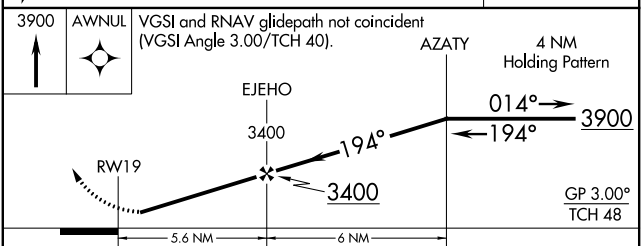
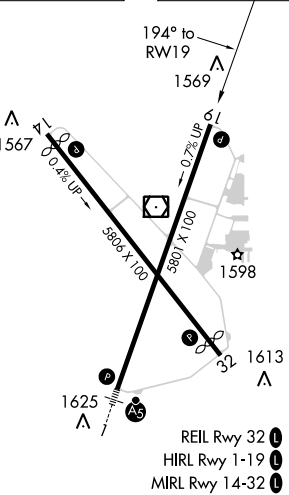
MISSED APPROACH:
Climb to 3900 direct
AWNUL and hold.

ASOS 119.025	MINNEAPOLIS CENTER 125.025 235.625	COLUMBUS RADIO 122.15	UNICOM 122.7 (CTAF) 📻
------------------------	--	---------------------------------	--

Procedure NA for arrivals at HARDS via V181 northbound.



ELEV 1573	D	TDZE 1543
-----------	----------	-----------



CATEGORY	A	B	C	D
LPV DA	1820-1 277 (300-1)			
LNAV/VNAV DA	1900-1¼ 357 (400-1¼)			
LNAV MDA	2180-1 637 (700-1)	2180-1¾ 637 (700-1¾)	2180-2 637 (700-2)	2180-2 637 (700-2)
CIRCLING	2180-1 607 (700-1)	2180-1¾ 607 (700-1¾)	2180-2 607 (700-2)	2180-2 607 (700-2)

NC-2: 15 AUG 2019 to 12 SEP 2019

NC-2: 15 AUG 2019 to 12 SEP 2019