

WAAS CH <b>86415</b> <b>W32A</b>	APP CRS <b>317°</b>	Rwy Idg <b>5160</b> TDZE <b>1560</b> Apt Elev <b>1573</b>
--	------------------------	---

# RNAV (GPS) RWY 32

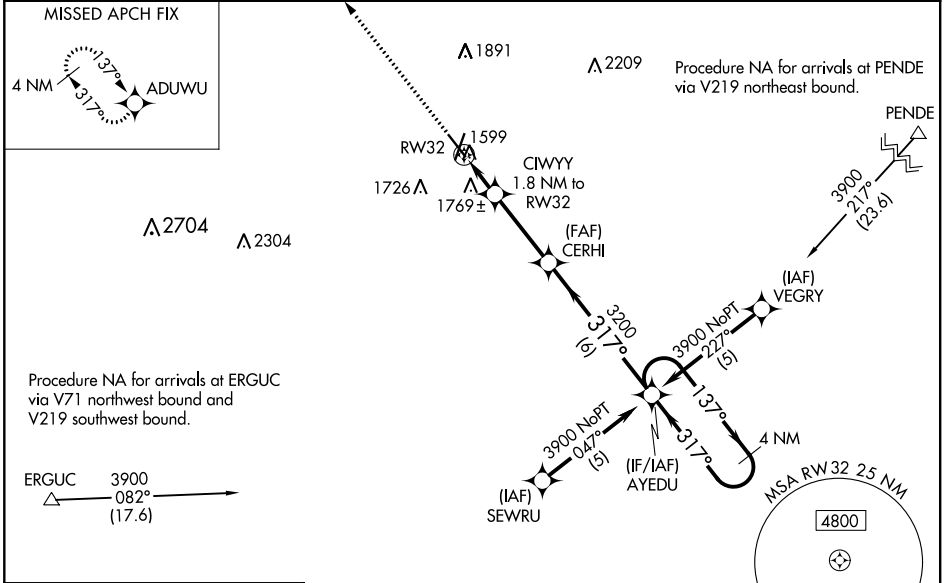
NORFOLK RGNL/KARL STEFAN MEMORIAL FIELD (OFK)

RNP APCH.

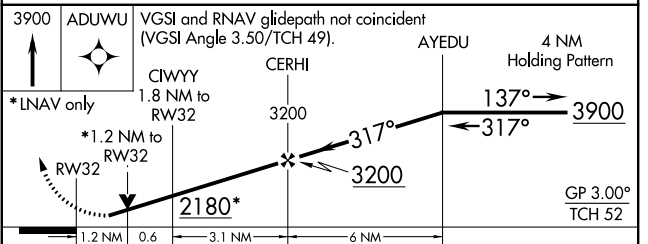
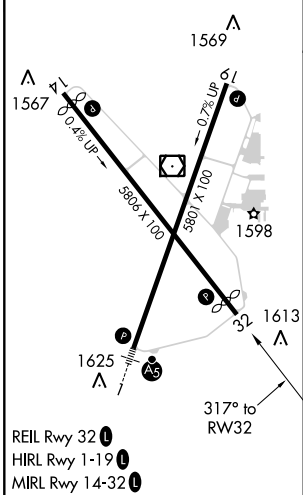
▼ For uncompensated Baro-VNAV systems, LNAV/VNAV NA below -18°C (0°F) or above 54°C (130°F). When local altimeter setting not received, use Wayne altimeter setting and increase all DA/MDA 80 feet, increase LPV all Cats visibility ¼ mile, LNAV/VNAV all Cats visibility ½ mile and LNAV Cat C visibility ¼ mile. Baro-VNAV and VDP NA when using Wayne altimeter setting. Rwy 32 helicopter visibility reduction below ¾ SM NA.

▲ MISSED APPROACH: Climb to 3900 direct ADUWU and hold.

ASOS <b>119.025</b>	MINNEAPOLIS CENTER <b>125.025 235.625</b>	COLUMBUS RADIO <b>122.15</b>	UNICOM <b>122.7 (CTAF)</b>
------------------------	--	---------------------------------	-------------------------------



ELEV 1573 **D** TDZE 1560



CATEGORY	A	B	C	D
LPV DA	1858-1 298 (300-1)			NA
LNAV/VNAV DA	2091-1¼ 531 (600-1¼)			NA
LNAV MDA	2020-1 460 (500-1)	2020-1¼ 460 (500-1¼)		NA
CIRCLING	2080-1 507 (600-1)	2080-1½ 507 (600-1½)		NA

NC-2, 15 AUG 2019 to 12 SEP 2019

NC-2, 15 AUG 2019 to 12 SEP 2019