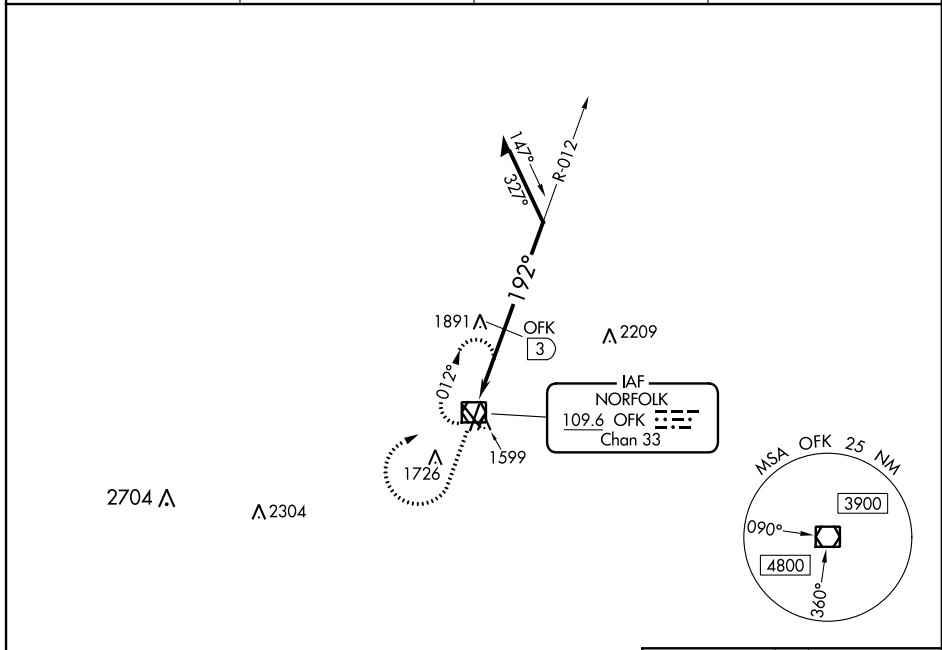


VOR/DME OFK 109.6 Chan 33	APP CRS 192°	Rwy Idg 5801 TDZE 1543 Apt Elev 1573
---	------------------------	---

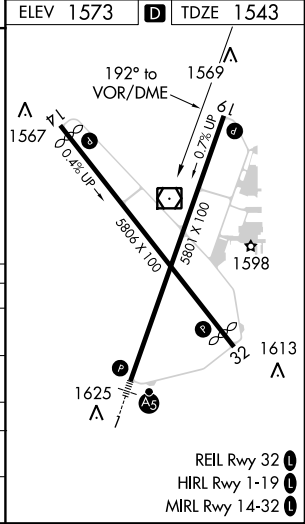
VOR RWY 19

NORFOLK RGNL/KARL STEFAN MEMORIAL FIELD (OFK)

<p>NA Rwy 19 helicopter visibility reduction below 3/4 SM NA.</p>		<p>MISSED APPROACH: Climb to 3900 then right turn to OFK VOR/DME and hold.</p>	
ASOS 119.025	MINNEAPOLIS CENTER 125.025 235.625	COLUMBUS RADIO 122.15	UNICOM 122.7 (CTAF)



3900	OFK	OFK VOR/DME	VGSI and descent angles not coincident (VGSI 3.00/TCH 40).	
↑	↷	☐	012°	3300
			2.90° TCH 48	2400
			192°	192° to VOR/DME
			2 NM	0.7 NM
CATEGORY	A	B	C	D
S-19	2400-1 857 (900-1)	2400-1¼ 857 (900-1¼)	2400-2½ 857 (900-2½)	NA
CIRCLING	2400-1 827 (900-1)	2400-1¼ 827 (900-1¼)	2400-2½ 827 (900-2½)	NA
DME MINIMUMS				
S-19	2200-1	657 (700-1)	2200-1¾ 657 (700-1¾)	NA
CIRCLING	2200-1	627 (700-1)	2200-1¾ 627 (700-1¾)	NA



NC-2, 15 AUG 2019 to 12 SEP 2019

NC-2, 15 AUG 2019 to 12 SEP 2019