

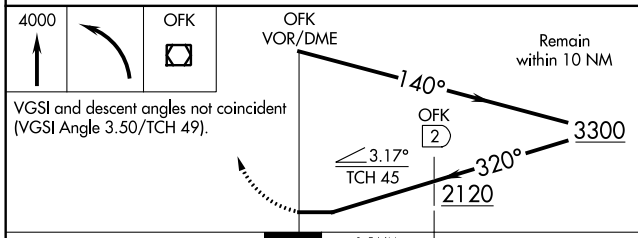
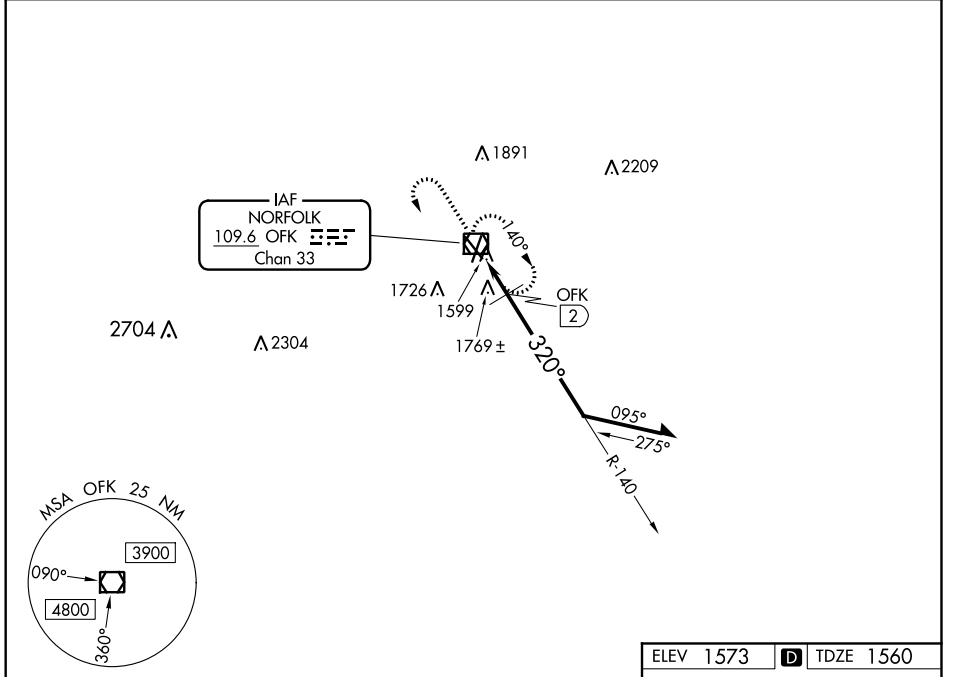
VOR/DME OFK 109.6 Chan 33	APP CRS 320°	Rwy Idg 5160 TDZE 1560 Apt Elev 1573
---	------------------------	---

VOR RWY 32

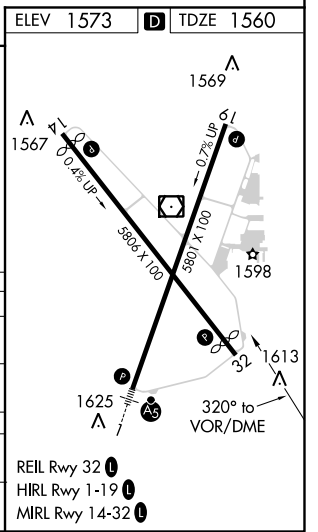
NORFOLK RGNL/KARL STEFAN MEMORIAL FIELD (OFK)

<p>NA Rwy 32 helicopter visibility reduction below 3/4 SM NA.</p>	<p>MISSED APPROACH: Climb to 4000 then left turn direct OFK VOR/DME and hold.</p>
--	---

ASOS 119.025	MINNEAPOLIS CENTER 125.025 235.625	COLUMBUS RADIO 122.15	UNICOM 122.7 (CTAF)
------------------------	--	---------------------------------	-------------------------------



CATEGORY	A	B	C	D
S-32	2120-1	560 (600-1)	2120-1½ 560 (600-1½)	NA
CIRCLING	2120-1	547 (600-1)	2120-1½ 547 (600-1½)	NA
DME MINIMUMS				
S-32	2020-1	460 (500-1)	2020-1¼ 460 (500-1¼)	NA
CIRCLING	2080-1	507 (600-1)	2080-1½ 507 (600-1½)	NA



NC-2, 15 AUG 2019 to 12 SEP 2019

NC-2, 15 AUG 2019 to 12 SEP 2019

VOR RWY 32