

ANCHORAGE EIGHT DEPARTURE

TED STEVENS ANCHORAGE INTL (ANC) (PANC)
AL-1500 (FAA) ANCHORAGE, ALASKA

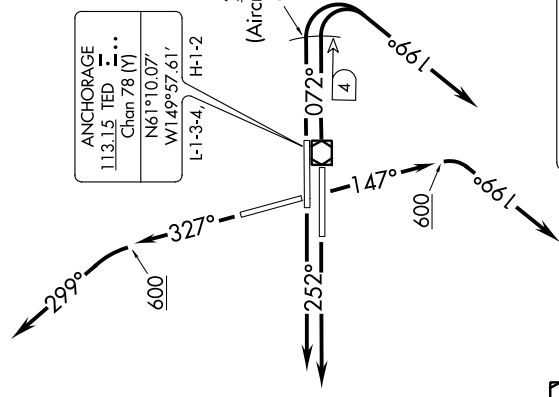
AK, 15 AUG 2019 to 10 OCT 2019

TOP ALTITUDE:
FL200

D-ATIS 135.5
 CLNC DEL 119.4 323.1
 GND CON 121.9 338.25
 ANCHORAGE TOWER 118.3 257.8
 ANCHORAGE DEP CON 118.6 290.5

ANCHORAGE
 113.15 TED
 Chan 78 (Y)
 N61°10.07'
 W149°57.61'
 L-1-3-4, H-1-2

2000 or TED 4 DME
 (Aircraft more than 20000 lbs
 or Turboprop aircraft)
 600 or TED 4 DME
 (All other aircraft)



NODLE
 N61°17.00'
 W152°00.00'
 13700
 H-1-2

SPARREVOHN
 117.2 SOA
 Chan 119
 N61°05.91'-W155°38.07'
 L-3, H-1-2

NOTE: Aircraft cleared via NODLE WP
 cross at or above 13700 for terrain.
 NOTE: RADAR required.

ILIAMINA
 411 III
 DME Chan 91 (114.4)
 N59°44.88'-W154°54.58'
 L-3, H-1-2

KENAI
 117.6 ENA
 Chan 123
 N60°36.88'
 W151°11.71'
 L-1-3-4, H-1-2

HOMER
 114.6 HOM
 Chan 93
 N59°42.57'
 W151°27.40'
 L-1-2-3-4, H-1-2

JOHNSTONE POINT
 116.7 JOH
 Chan 114
 N60°28.86'-W146°35.96'
 L-1-3-4, H-1

MIDDLETON ISLAND
 115.3 MDO
 Chan 100
 N59°25.31'-W146°21.00'
 L-1-2-3, H-1

TAKEOFF MINIMUMS
 Rwy 5 25L/R, 15: Standard
 Rwy 7L: Standard with minimum climb of 390' per NM to 3500.
 Rwy 7R: Standard with minimum climb of 365' per NM to 3500.
 Rwy 33: Standard, ATC climb of 400' per NM to 3000.

(NARRATIVE ON FOLLOWING PAGE)

NOTE: Chart not to scale.

AK, 15 AUG 2019 to 10 OCT 2019

ANCHORAGE EIGHT DEPARTURE