

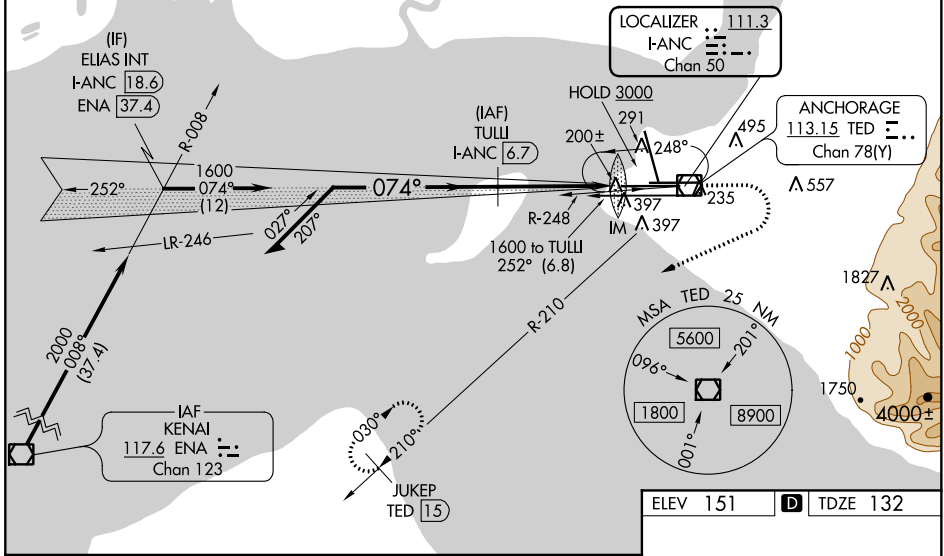
LOC/DME I-ANC 111.3 Chan 50	APP CRS 074°	Rwy Idg 12400 TDZE 132 Apt Elev 151
--	------------------------	--

ILS RWY 7R (SA CAT I)

TED STEVENS ANCHORAGE INTL (ANC) (PANC)

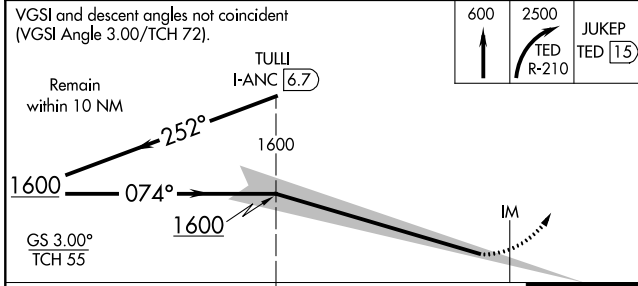
⚠ DME required. Rwy 7L threshold 6140 feet east of Rwy 7R threshold. Requires specific OPSPEC, MSPEC, or LOA approval and use of HUD to DH.	ALSF-2 	MISSED APPROACH: Climb to 600 then climbing right turn to 2500 on TED VOR/DME R-210 to JUKEP/TED 15 DME and hold.		
D-ATIS 135.5	ANCHORAGE APP CON 118.6 290.5	ANCHORAGE TOWER 118.3 257.8	GND CON 121.9 338.25	CLNC DEL 119.4 323.1

Aircraft arriving at TED VOR/DME may require descent to 3600 in the TED VOR/DME holding pattern before commencing approach.

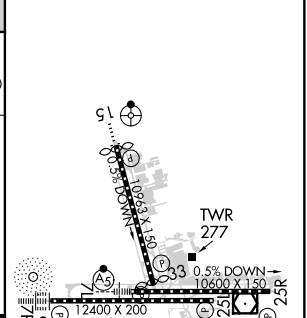


AK, 15 AUG 2019 to 10 OCT 2019

AK, 15 AUG 2019 to 10 OCT 2019



ELEV 151	D TDZE 132
----------	-------------------



CATEGORY	A	B	C	D
S-ILS 7R	RA 245/14 150 DA 282			

SA CATEGORY I ILS - SPECIAL AIRCREW & AIRCRAFT CERTIFICATION REQUIRED

REIL Rwy 33
TDZ/CL Rwy 7L and 7R
HIRL all Rwy