

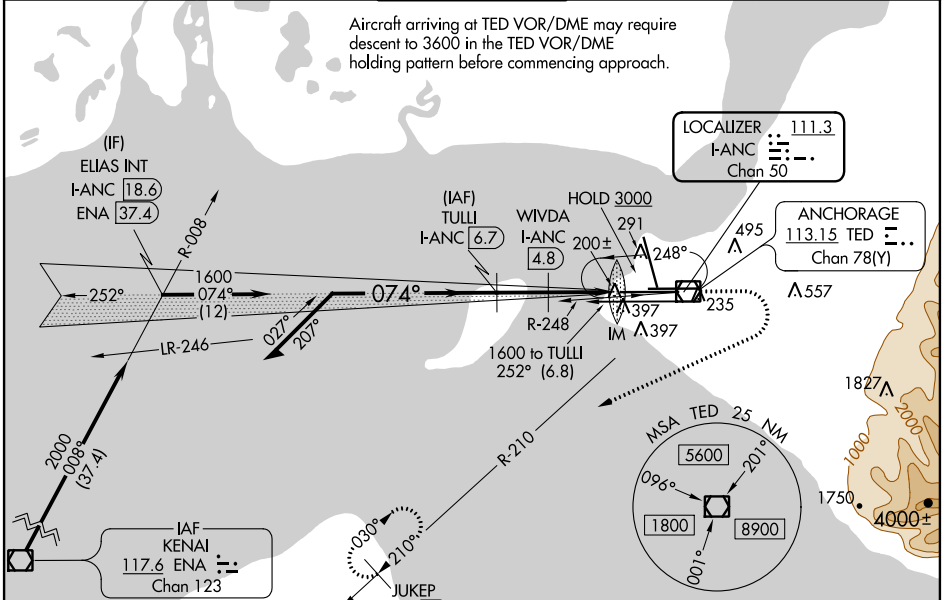
LOC/DME I-ANC <b>111.3</b> Chan 50	APP CRS <b>074°</b>	Rwy Idg TDZE Apt Elev	7R <b>12400</b> <b>132</b> <b>151</b>	7L <b>10600</b> <b>128</b> <b>151</b>
--	------------------------	-----------------------------	--	--

# ILS or LOC RWY 7R

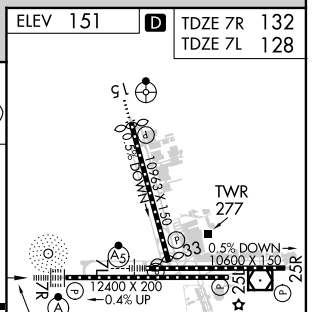
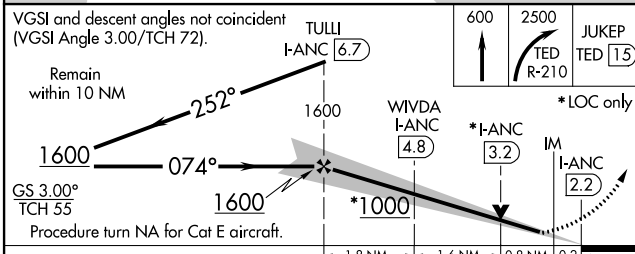
TED STEVENS ANCHORAGE INTL (ANC) (PANC)

<p><b>▼</b> DME required. For inop ALS, increase S-ILS 7R Cat E visibility to RVR 4000, and S-LOC 7R Cat E visibility to RVR 6000. Rwy 7L threshold 6140 feet east of Rwy 7R threshold. Inop table does not apply to Sidestep Rwy 7L Cat A, B and C.</p>	<p>ALS F-2 Rwy 7R</p>	<p>MALSR Rwy 7L</p>	<p>MISSED APPROACH: Climb to 600 then climbing right turn to 2500 on TED VOR/DME R-210 to JUKEP/TED 15 DME and hold.</p>
	<p>ANCHORAGE APP CON</p> <p><b>118.6 290.5</b></p>		

D-ATIS <b>135.5</b>	ANCHORAGE APP CON <b>118.6 290.5</b>	ANCHORAGE TOWER <b>118.3 257.8</b>	GND CON <b>121.9 338.25</b>	CINC DEL <b>119.4 323.1</b>
------------------------	---	---------------------------------------	--------------------------------	--------------------------------



ELEV 151	TDZE 7R 132	TDZE 7L 128
----------	-------------	-------------



CATEGORY	A	B	C	D	E
S-ILS 7R	332/18 200 (200-½)				
S-LOC 7R	520/24 388 (400-½)				
S-LOC SIDESTEP 7L	520/50 392 (400-1)	520-1½ 392 (400-1½)			
CIRCLING	700-1 549 (600-1)	700-1½ 549 (600-1½)	800-2 649 (700-2)	920-2¾ 769 (800-2¾)	520/18 388 (400-½)

REIL Rwy 33  
TDZ/CL Rwys 7L and 7R  
HIRL all Rwys

AK, 15 AUG 2019 to 10 OCT 2019

AK, 15 AUG 2019 to 10 OCT 2019