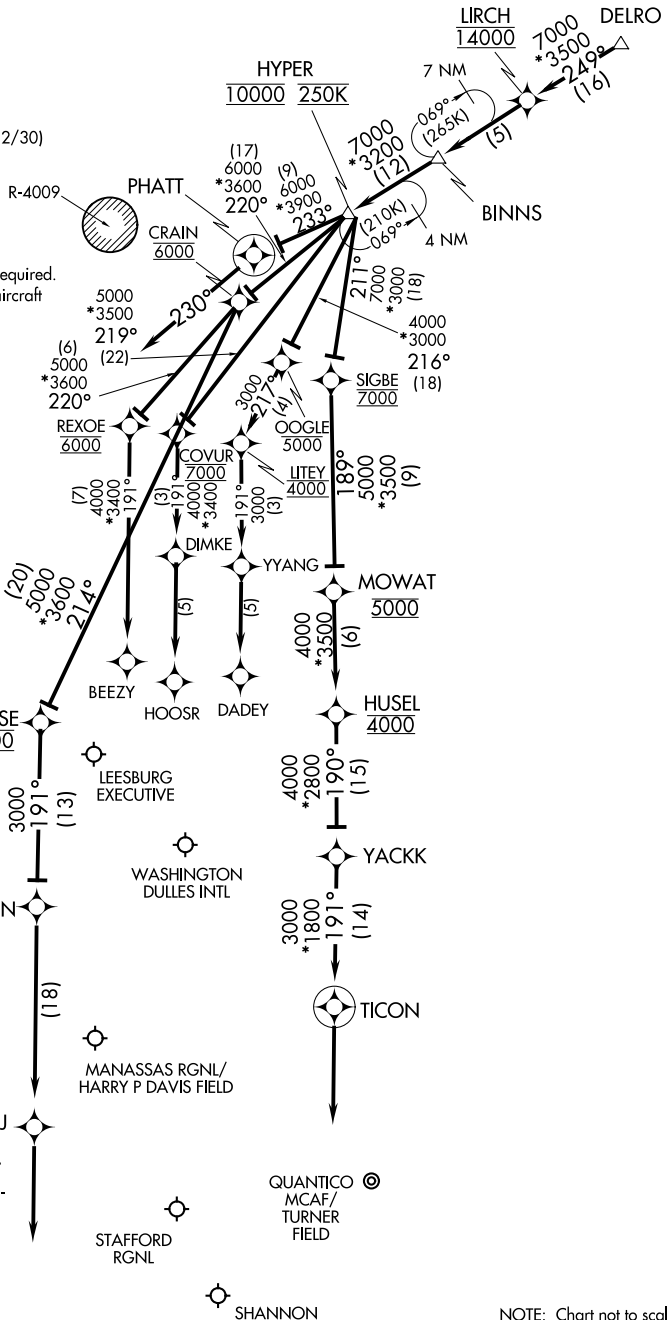


HYPER SEVEN ARRIVAL (RNAV) Arrival Routes

WASHINGTON, DC

POTOMAC APP CON
 133.0 288.35
 DULLES ATIS
 134.85
 DULLES TOWER
 120.1 317.8 (Rwy 1R/19L)
 120.25 348.6 (Rwy 1C/19C)
 134.425 348.6 (Rwy 1L/19R, 12/30)

- NOTE: RADAR required.
- NOTE: RNAV 1.
- NOTE: DME/DME/IRU or GPS required.
- NOTE: Turbojet and turboprop aircraft only.
- NOTE: For aircraft capable of 180K or greater.



NE-3, 15 AUG 2019 to 12 SEP 2019

NE-3, 15 AUG 2019 to 12 SEP 2019

NOTE: Chart not to scale.

HYPER SEVEN ARRIVAL (RNAV) Arrival Routes

WASHINGTON, DC