

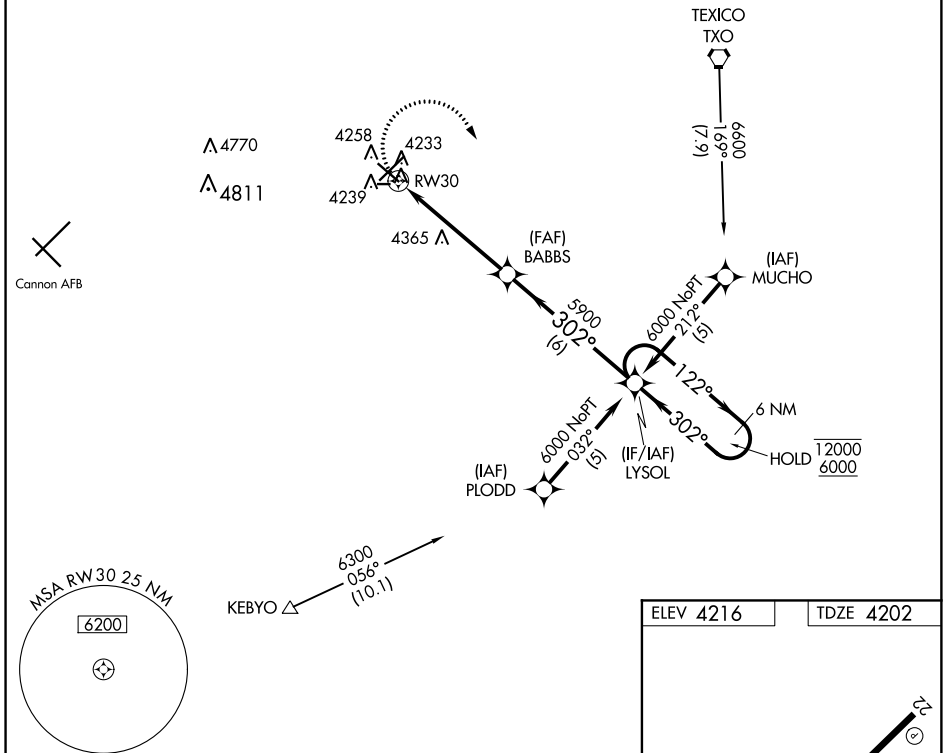
APP CRS	Rwy Idg	5697
302°	TDZE	4202
	Apt Elev	4216

RNAV (GPS) RWY 30

CLOVIS MUNI (CVN)

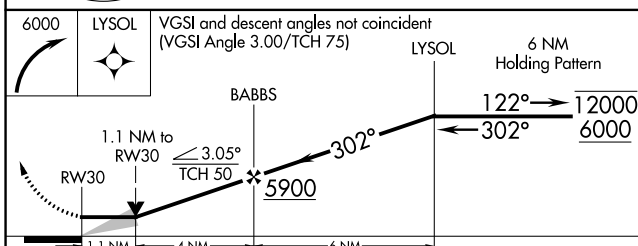
RNP APCH.		MISSED APPROACH: Climbing right turn to 6000 direct LYSOL and hold.	
CAUTION: Cannon AFB 12 NM WSW, heavy USAF fighter traffic.			
AWOS-3PT 135.375	CANNON APP CON 118.425 352.1	CLNC DEL 119.0	UNICOM 122.8 (CTAF) ①

Procedure NA for arrivals at TXO VORTAC via V62 northwest bound.



SW-1, 15 AUG 2019 to 12 SEP 2019

SW-1, 15 AUG 2019 to 12 SEP 2019



ELEV 4216	TDZE 4202
-----------	-----------

Diagram details: RWY 30 (5697 X 150), Taxiway (7200 X 150), Ultralight Rwy (2442 X 75). Approach slope 0.3% UP. 302° to RWY 30.

REIL Rwy 12 and 30
MIRL Rwy 4-22 and 12-30 ①

CATEGORY	A	B	C	D
LNVA MDA	4620-1 418 (500-1)		4620-1¼ 418 (500-1¼)	
CIRCLING	4680-1 464 (500-1)		4700-1½ 484 (500-1½)	4820-2 604 (700-2)