


WAAS CH 97300 W04A	APP CRS 037°	Rwy Idg TDZE Apt Elev	7200 4205 4216
--	------------------------	-----------------------------	---

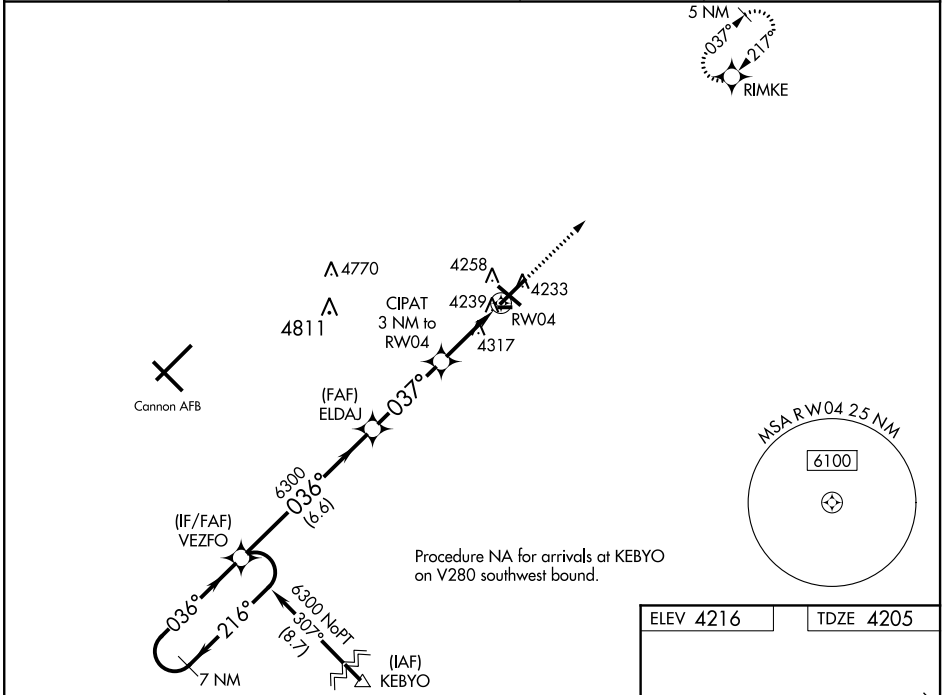
RNAV (GPS) RWY 4

CLOVIS MUNI (CVN)

⚠ For uncompensated Baro-VNAV systems, LNAV/VNAV NA below -23°C (-9°F) or above 49°C (121°F). DME/DME RNP-0.3 NA. When local altimeter setting not received, use Cannon AFB altimeter setting and increase all DA and MDA 40 feet; increase LNAV Cat C/D visibility ¼ mile. For inop MALSR, increase LNAV/VNAV all Cats visibility to ¾ mile. For inop MALSR when using Cannon AFB altimeter setting, increase LNAV Cat C/D visibility to 1 ¾ mile. Baro-VNAV and VDP NA when using Cannon AFB altimeter setting.

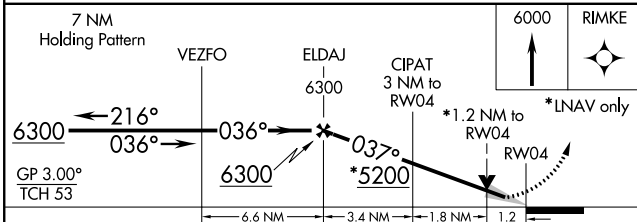
MALSR

MISSED APPROACH:
Climb to 6000 direct RIMKE and hold.

AWOS-3PT 135.375	CANNON APP CON 118.425 352.1	CLNC DEL 119.0	UNICOM 122.8 (CTAF) 
----------------------------	--	--------------------------	---



SW-1, 15 AUG 2019 to 12 SEP 2019


SW-1, 15 AUG 2019 to 12 SEP 2019



ELEV 4216	TDZE 4205
-----------	-----------

Ultralight Rwy
2442 X 75

037° to RWY 4

CATEGORY	A	B	C	D
LPV DA		4405-½	200 (200-½)	
LNAV/ VNAV DA		4455-½	250 (300-½)	
LNAV MDA	4640-½	435 (500-½)	4640-¾	435 (500-¾)
 CIRCLING	4680-1	464 (500-1)	4700-1½ 484 (500-1½)	4820-2 604 (700-2)