

WAAS CH 78035 W16B	APP CRS 161°	Rwy Idg 3715 TDZE 186 Apt Elev 192
--	------------------------	---

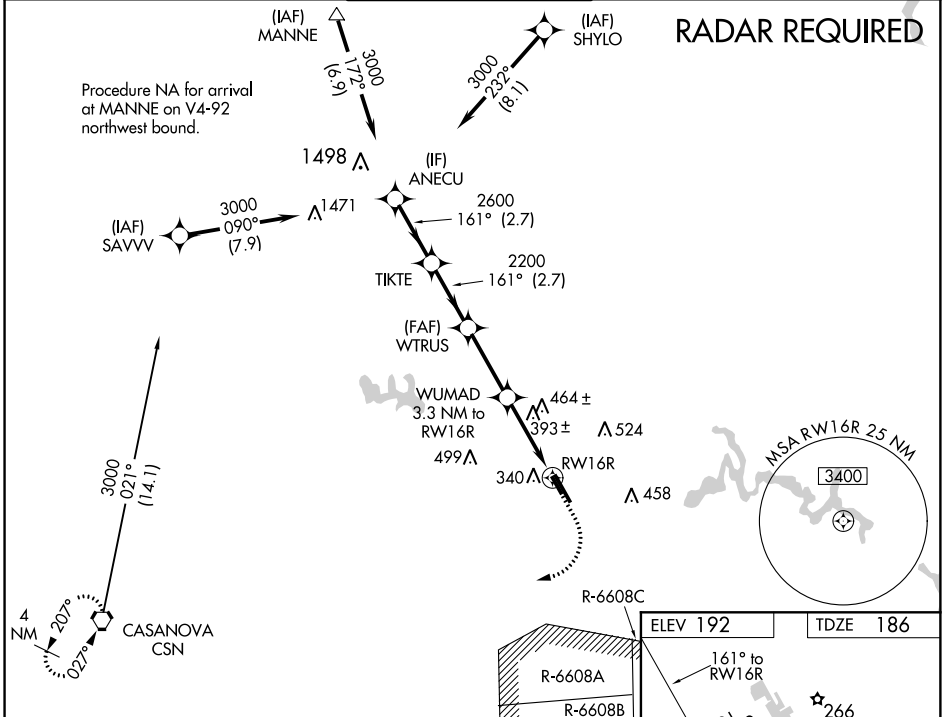
RNAV (GPS) RWY 16R

MANASSAS RGNL/HARRY P DAVIS FIELD (HEF)

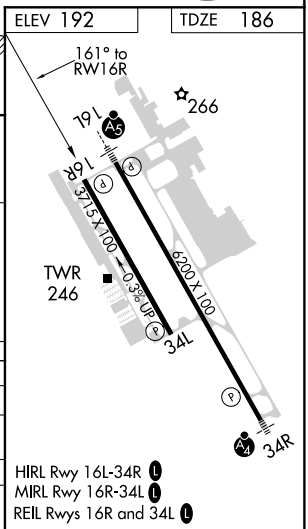
⚠ For uncompensated Baro-VNAV systems, LNAV/VNAV NA below -15°C (5°F) or above 54°C (130°F). DME/DME RNP-0.3 NA. Helicopter visibility reduction below 3/4 SM NA. When local altimeter setting is not received use Washington Dulles Intl altimeter setting and increase all DA 49 feet and all MDA 60 feet, increase LPV all Cats visibility 1/8 mile, LNAV/VNAV all Cats 1/4 mile, LNAV Cat C/D visibility 1/8 mile, and Circling Cat C/D 1/4 mile. VDP and Baro-VNAV NA when using Washington Dulles Intl altimeter setting.

MISSED APPROACH: Climb to 700 then climbing right turn to 3000 direct CSN VORTAC and hold.

ATIS 125.175	POTOMAC APP CON 128.525 306.925	MANASSAS TOWER ★ 133.1 (CTAF) 360.75	GND CON 121.8	CLNC DEL 120.2
------------------------	---	--	-------------------------	--------------------------



	ANECU	TIKTE	WTRUS	WUMAD	
	3000	2600	2200	3.3 NM to RW16R	
				*1.3 NM to RW16R	
	GP 3.00° TCH 53				
	2.7 NM	2.7 NM	2.9 NM	2 NM	1.3 NM
CATEGORY	A	B	C	D	
LPV DA		494-1	308 (400-1)		
LNAV/VNAV DA		675-1 3/8	489 (500-1 3/8)		
LNAV MDA	660-1	474 (500-1)	660-1 3/8	474 (500-1 3/8)	
CIRCLING	720-1 528 (600-1)	740-1 548 (600-1)	840-1 3/4 648 (700-1 3/4)	880-2 1/4 688 (700-2 1/4)	



NE-3, 15 AUG 2019 to 12 SEP 2019

NE-3, 15 AUG 2019 to 12 SEP 2019