

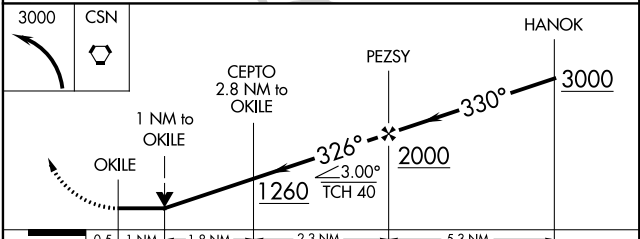
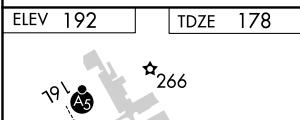
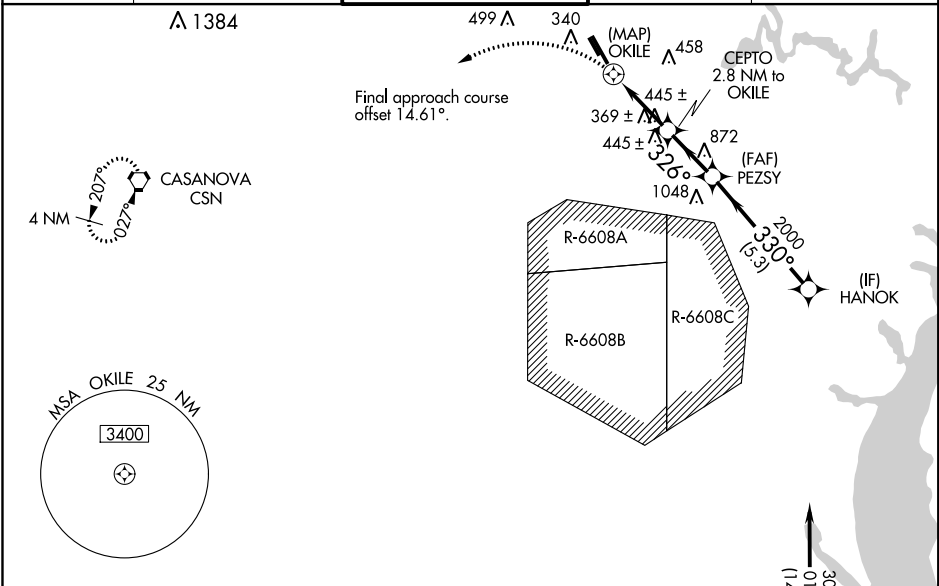
WAAS CH <b>63130</b> <b>W34A</b>	APP CRS <b>326°</b>	Rwy Idg TDZE Apt Elev	<b>6200</b> <b>178</b> <b>192</b>
--	------------------------	-----------------------------	---

# RNAV (GPS) RWY 34R

MANASSAS RGNL/HARRY P DAVIS FIELD (HEF)

RNP APCH. <p>▼ Rwy 34R helicopter visibility reduction below 3/4 SM NA. When local altimeter setting not received, use Washington Dulles Intl altimeter setting and increase all MDA 60 feet, increase LP and LNAV and Circling Cats C/D visibility 1/4 SM. For inop ALS when using Washington Dulles Intl, increase LP and LNAV all Cats 1/4 SM. For inop ALS, increase LP and LNAV Cats C/D visibility to 1 3/8 SM. Inop table does not apply.</p>	MALSF 	MISSED APPROACH: Climbing left turn to 3000 direct CSN VORTAC and hold.
---	-----------	--

ATIS <b>125.175</b>	POTOMAC APP CON <b>128.525 306.925</b>	<b>MANASSAS TOWER *</b> <b>133.1 (CTAF) 360.75</b>	GND CON <b>121.8</b>	CLNC DEL <b>120.2</b>
------------------------	---	---	-------------------------	--------------------------



CATEGORY	A	B	C	D
LP MDA	620-1 442 (500-1)			
LNAV MDA	640-1	462 (500-1)	640-1 1/8	462 (500-1 1/8)
CIRCLING	700-1	740-1	840-1 3/4	920-2 1/4
	508 (600-1)	548 (600-1)	648 (700-1 1/4)	728 (800-2 1/4)

ELEV 192 TDZE 178

TWR 246

HIRL Rwy 16L-34R (1)

MIRL Rwy 16R-34L (1)

REIL Rwy 16R and 34L (1)

NE-3, 15 AUG 2019 to 12 SEP 2019

NE-3, 15 AUG 2019 to 12 SEP 2019