

NDB ZEF <b>326</b>	APP CRS <b>245°</b>	Rwy Idg TDZE Apt Elev	<b>N/A</b> <b>N/A</b> <b>1067</b>
-----------------------	------------------------	-----------------------------	---

# NDB-A

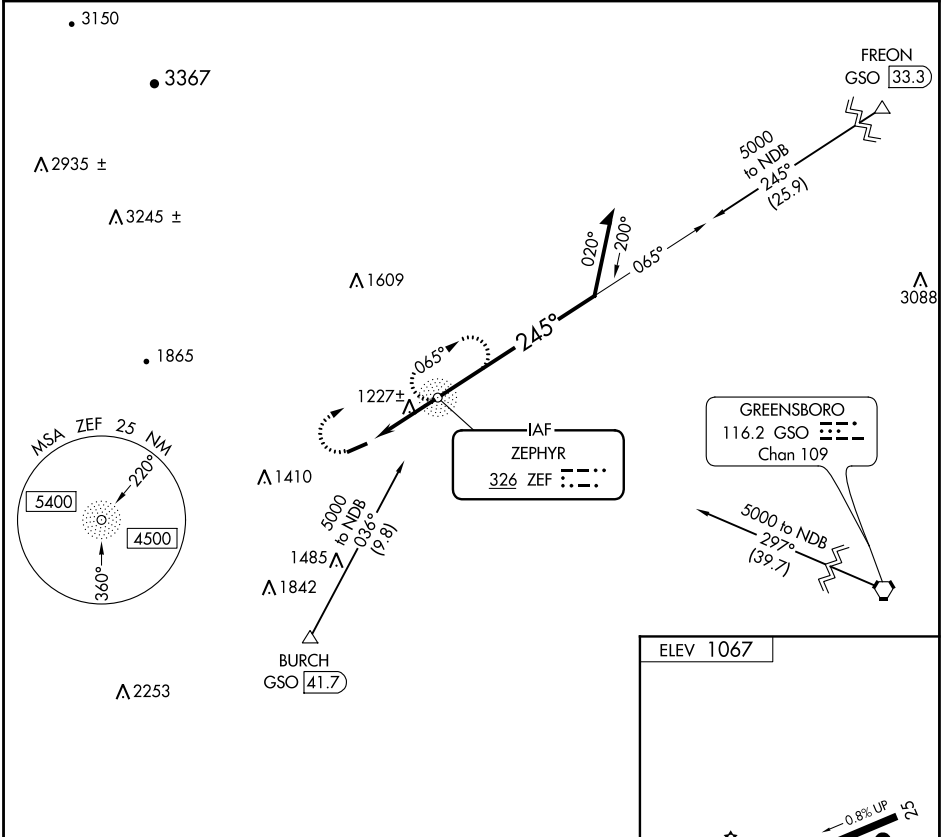
ELKIN MUNI (ZEF)

Obtain local altimeter setting on CTAF; when not received, use Mount Airy altimeter setting and increase MDA 80 feet and Cats C/D visibility 1/4 mile. Procedure NA at night. Helicopter visibility reduction below 1 SM NA.

MISSED APPROACH: Climbing right turn to 4000 direct ZEF NDB and hold, continue climb-in-hold to 4000.

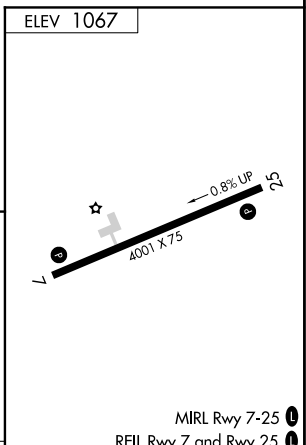
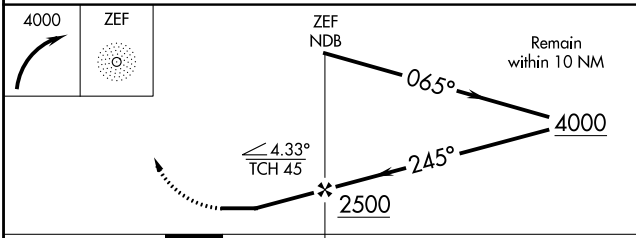
ATLANTA CENTER  
**125.15 263.0**

UNICOM  
**123.05 (CTAF)**



SE-2, 15 AUG 2019 to 12 SEP 2019

SE-2, 15 AUG 2019 to 12 SEP 2019



CATEGORY	A	B	C	D	FAF to MAP 3.1 NM					
	1600-1	533 (600-1)	1680-1¾ 613 (700-1¾)	1840-2½ 773 (800-2½)	Knots	60	90	120	150	180
CIRCLING					Min:Sec	3:06	2:04	1:33	1:14	1:02