


LOC I-RYY 111.9	APP CRS 273°	Rwy ldg TDZE Apt Elev	5374 1011 1040
---------------------------	------------------------	-----------------------------	---

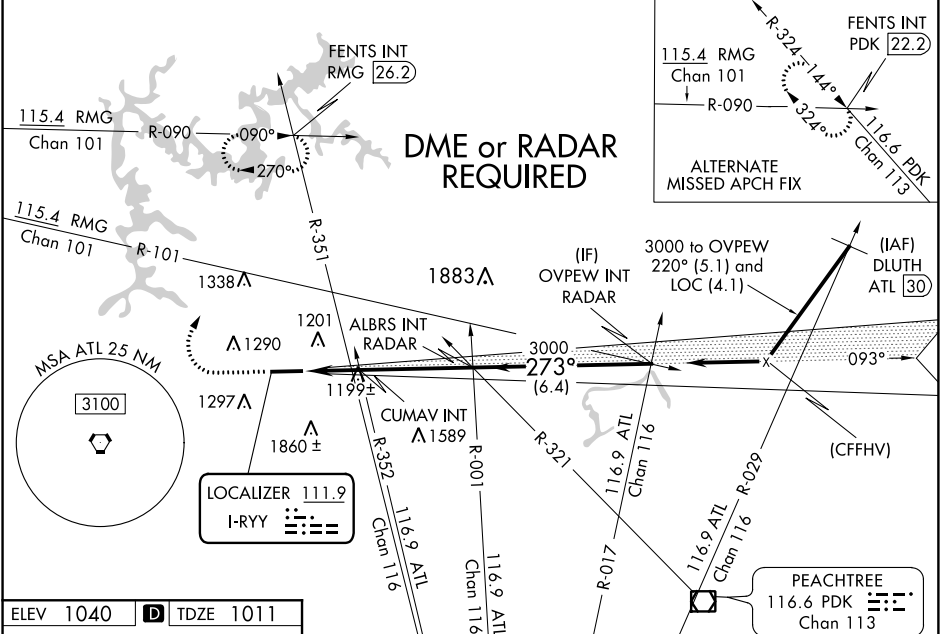
ILS or LOC RWY 27

COBB COUNTY INTL-McCOLLUM FIELD (RYY)

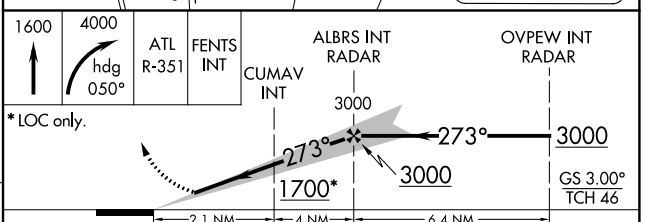
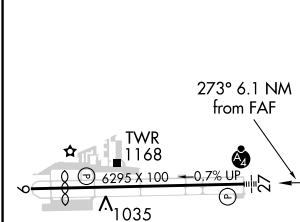
⚠ Circling to Rwy 9 NA at night. When local altimeter setting not received, use Hartsfield-Jackson Atlanta Intl altimeter setting and increase all DA/MDA 60 feet; increase S-ILS 27 all Cats and CUMAV fix minimums S-LOC 27 Cats C and D visibility ½ mile; increase S-LOC 27 Cat B, Circling Cat C, and CUMAV fix minimums Circling Cat C visibility ¼ mile; increase S-LOC 27 Cats C and D visibility ½ mile.

MALSF
 MISSED APPROACH: Climb to 1600 then climbing right turn to 4000 on heading 050° and ATL VORTAC R-351 to FENTS INT/RMG 26.2 DME and hold, continue climb-in-hold to 4000.

ATIS 128.125	ATLANTA APP CON 121.0 268.7	McCOLLUM TOWER * 125.9 (CTAF) 0	GND CON 119.0	CLNC DEL 119.0 268.7	UNICOM 122.7
------------------------	---------------------------------------	---	-------------------------	--------------------------------	------------------------



ELEV 1040	D TDZE 1011
-----------	--------------------



CATEGORY	A	B	C	D
S-ILS 27	1211-¾ 200 (200-¾)			
S-LOC 27	1700-1	689 (700-1)	1700-2	689 (700-2)
CIRCLING	1780-1	740 (800-1)	1780-2 740 (800-2)	2220-3 1180 (1200-3)
CUMAV FIX MINIMUMS (DUAL VOR RECEIVERS REQUIRED)				
S-LOC 27	1460-1	449 (500-1)	1460-1¾	449 (500-1¾)
CIRCLING	1780-1	740 (800-1)	1780-2 740 (800-2)	2220-3 1180 (1200-3)

HIRL Rwy 9-27 **0**

FAF to MAP 6.1 NM

Knots	60	90	120	150	180
Min:Sec	6:06	4:04	3:03	2:26	2:02

ILS or LOC RWY 27

SE-4, 15 AUG 2019 to 12 SEP 2019

SE-4, 15 AUG 2019 to 12 SEP 2019