

VORTAC RMG 115.4 Chan 101	APP CRS 108°	Rwy ldg 5233 TDZE 1028 Apt Elev 1040
---	------------------------	---

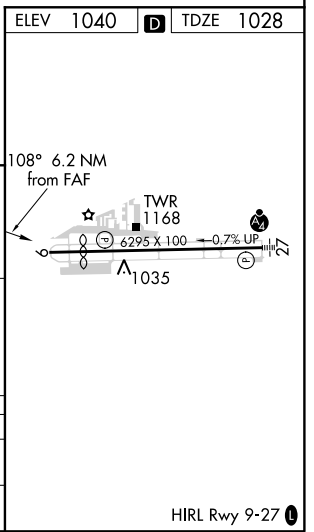
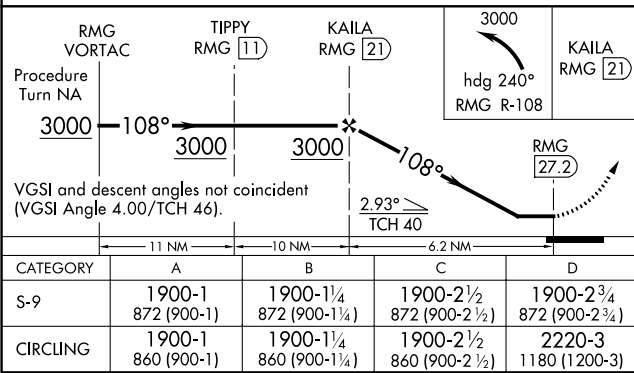
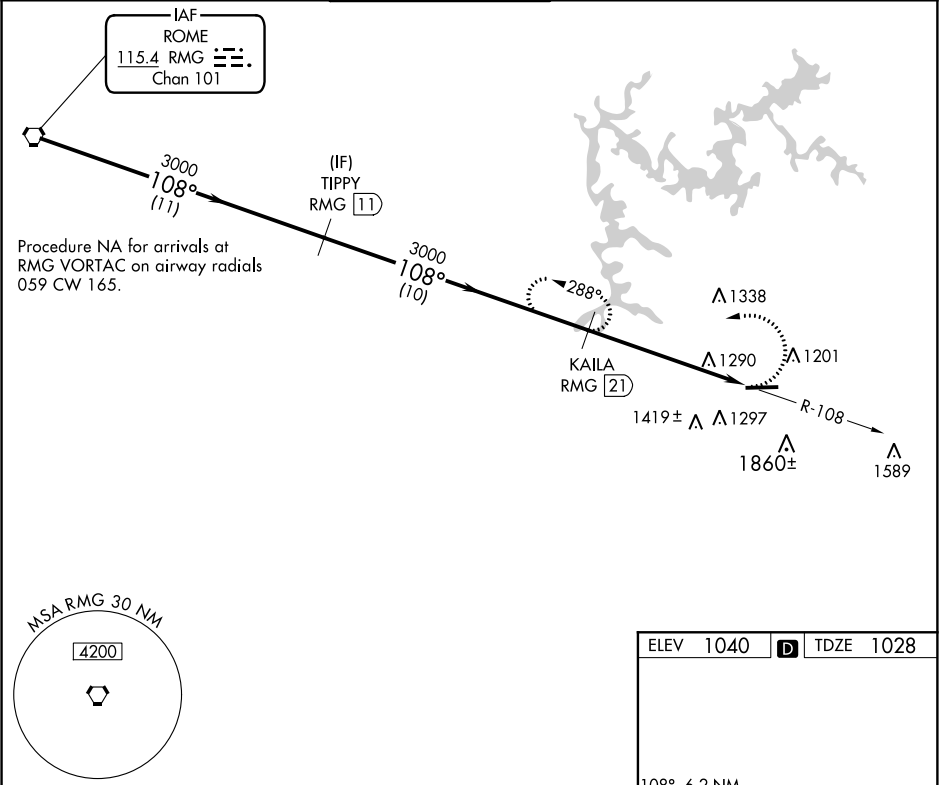
VOR/DME RWY 9

COBB COUNTY INTL-McCOLLUM FIELD (RYY)

NA Helicopter visibility reduction below 1 SM NA. When local altimeter setting not received, use Hartsfield-Jackson Atlanta Intl altimeter setting and increase all MDA 60 feet and S-9 Cat A/C/D and Circling Cat A/C visibilities 1/4 mile. Night landing: Rwy 9 NA.

MISSED APPROACH: Climbing left turn to 3000 via heading 240° and RMG R-108 to KAILA/21 DME and hold.

ATIS 128.125	ATLANTA APP CON 121.0 268.7	McCOLLUM TOWER * 125.9 (CTAF) 0	GND CON 119.0	CLNC DEL 119.0 268.7	UNICOM 122.7
------------------------	---------------------------------------	---	-------------------------	--------------------------------	------------------------



SE-4, 15 AUG 2019 to 12 SEP 2019

SE-4, 15 AUG 2019 to 12 SEP 2019