

| | | |
|--|------------------------|---|
| WAAS CH 63234 W17A | APP CRS 173° | Rwy Idg 4100 TDZE 1153 Apt Elev 1153 |
|--|------------------------|---|

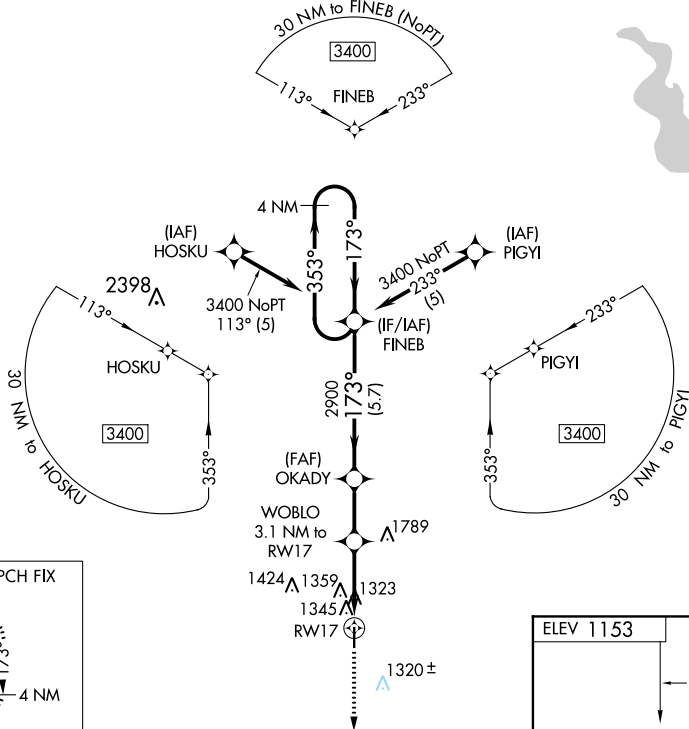
RNAV (GPS) RWY 17

ABILENE MUNI (K78)

⚠ Rwy 17 helicopter visibility reduction below 1 SM NA. DME/DME RNP-0.3 NA. Straight-in Rwy 17 NA at night, Circling Rwy 17 NA at night. When local altimeter setting not received, use Salina altimeter setting.

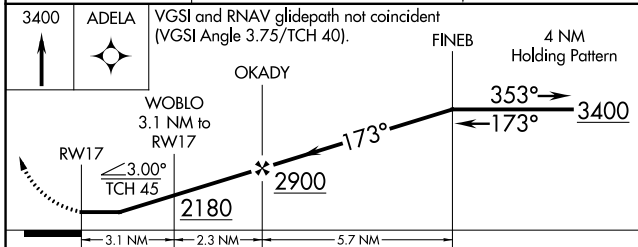
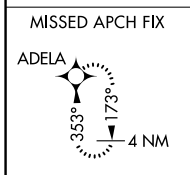
MISSED APPROACH: Climb to 3400 direct ADELA and hold.

| | | |
|--------------------------|--|---------------------------------|
| AWOS-3 124.125 | MARSHALL GCA ★ 121.25 254.35 | UNICOM 122.8 (CTAF) 0 |
|--------------------------|--|---------------------------------|



NC-2. 15 AUG 2019 to 12 SEP 2019

NC-2. 15 AUG 2019 to 12 SEP 2019



| | |
|----------------------|-----------|
| ELEV 1153 | TDZE 1153 |
| 173° to RWY 17 | |
| ZL | |
| 4100 X 75 | |
| 35 | |
| REIL Rwy 17 and 35 0 | |
| MIRL Rwy 17-35 0 | |

| CATEGORY | A | B | C | D |
|-------------------|--------|-------------|--|----|
| LP MDA | 1640-1 | 487 (500-1) | 1640-1 $\frac{3}{8}$ 487 (500-1 $\frac{3}{8}$) | NA |
| LNAV MDA | 1680-1 | 527 (600-1) | 1680-1 $\frac{1}{2}$ 527 (600-1 $\frac{1}{2}$) | NA |
| C CIRCLING | 1740-1 | 587 (600-1) | 1980-2 $\frac{1}{2}$ 827 (900-2 $\frac{1}{2}$) | NA |