

WAAS CH <b>97734</b> <b>W35A</b>	APP CRS <b>353°</b>	Rwy Idg <b>4100</b> TDZE <b>1151</b> Apt Elev <b>1153</b>
--	------------------------	---

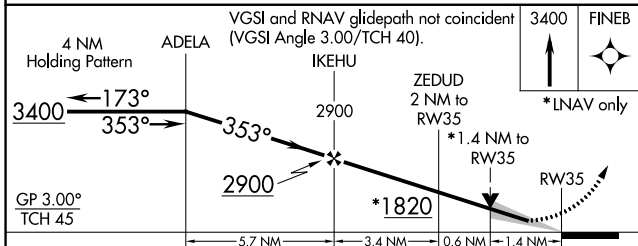
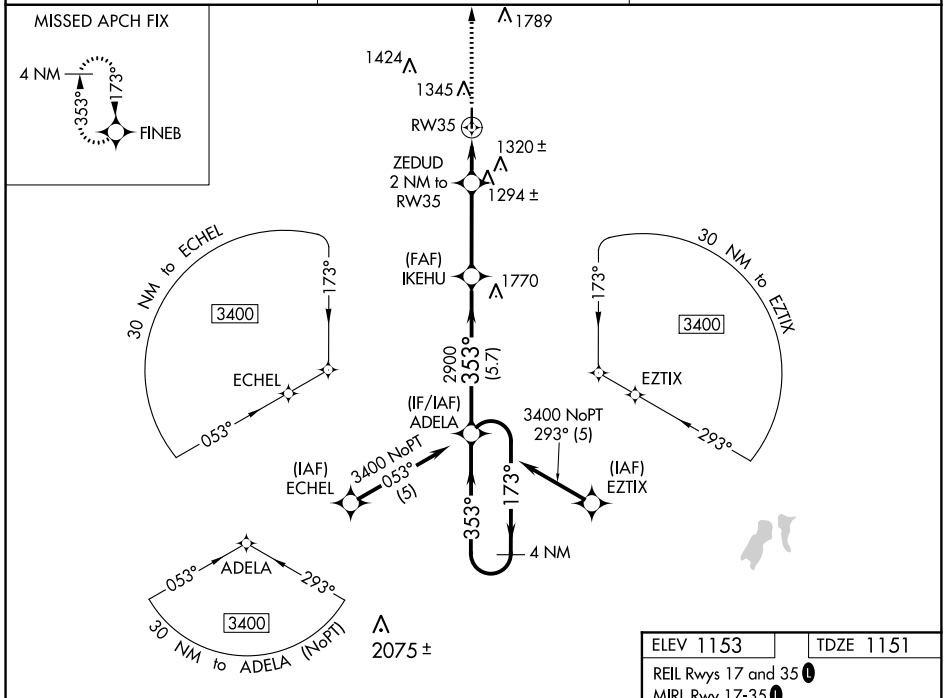
# RNAV (GPS) RWY 35

ABILENE MUNI (K78)

**⚠** For uncompensated Baro-VNAV systems, LNAV/VNAV NA below 17°C (2°F) or above 54°C (130°F). DME/DME RNP-0.3 NA. Baro-VNAV and VDP NA when using Salina altimeter setting. When local altimeter setting not received, use Salina altimeter setting. Circling Rwy 17 NA at night.

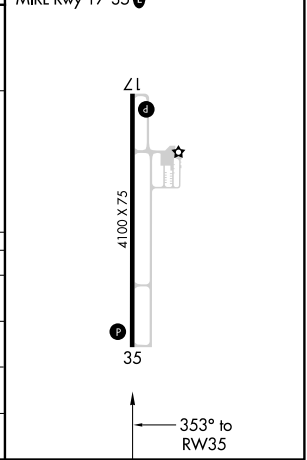
**MISSSED APPROACH:** Climb to 3400 direct FINEB and hold.

AWOS-3 <b>124.125</b>	MARSHALL GCA* <b>121.25 254.35</b>	UNICOM <b>122.8 (CTAF)</b>
--------------------------	---------------------------------------	-------------------------------



ELEV 1153	TDZE 1151
REIL Rwy 17 and 35	
MIRL Rwy 17-35	

CATEGORY	A	B	C	D
LPV DA	1468-1	317 (400-1)		NA
LNAV/VNAV DA	1468-1	317 (400-1)		NA
LNAV MDA	1620-1	469 (500-1)	1620-1 3/8 469 (500-1 3/8)	NA
<b>C</b> CIRCLING	1740-1	587 (600-1)	1980-2 1/2 827 (900-2 1/2)	NA



NC-2, 15 AUG 2019 to 12 SEP 2019

NC-2, 15 AUG 2019 to 12 SEP 2019