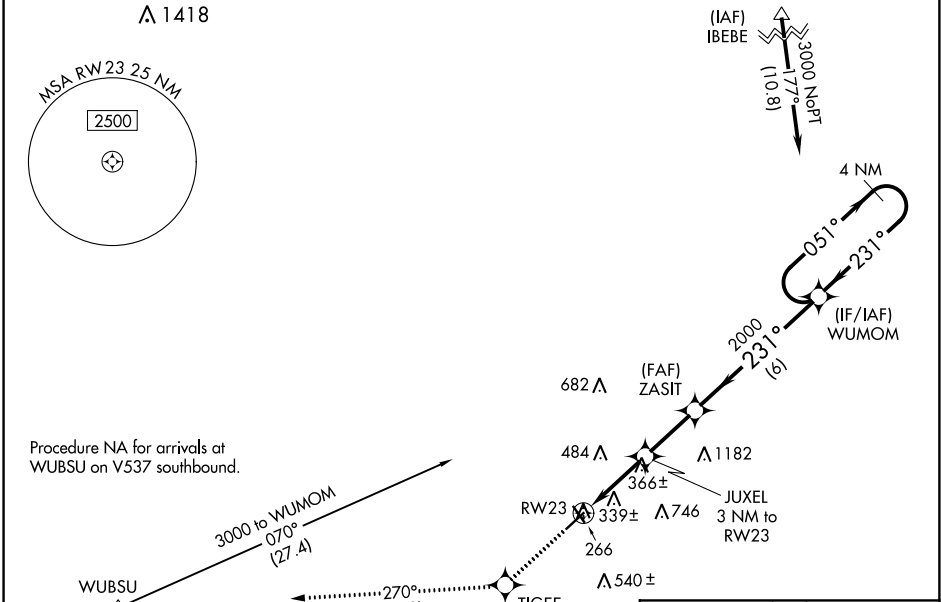


WAAS CH <b>81833</b> <b>W23A</b>	APP CRS <b>231°</b>	Rwy Idg <b>5001</b> TDZE <b>235</b> Apt Elev <b>236</b>
--	------------------------	---

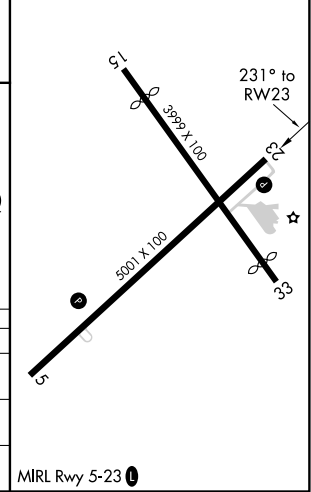
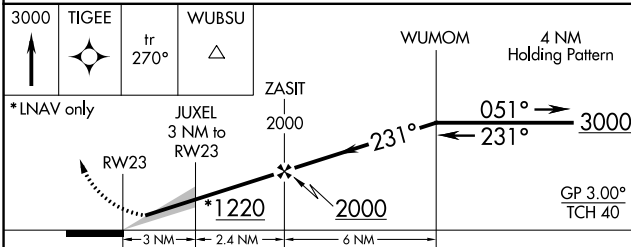
# RNAV (GPS) RWY 23

COOK COUNTY (15J)

RNP APCH.		MISSED APPROACH: Climb to 3000 direct TIGEE and on track 270° to WUBSU and hold.
<p>Baro-VNAV NA. Use Moultrie altimeter setting; when not received, use Valdosta Rgnl altimeter setting and increase all DA 7 feet and all MDA 20 feet, increase LNAV/VNAV all Cats visibility 1/8 SM and LNAV Cat C and D visibility 1/8 SM.</p>		
MOULTRIE AWOS-3PT <b>118.925</b>	VALDOSTA APP CON★ <b>126.6 285.6</b>	UNICOM <b>122.8 (CTAF) 0</b>



ELEV 236	TDZE 235
----------	----------



CATEGORY	A	B	C	D
LPV DA	536-1		301 (400-1)	
LNAV/VNAV DA	689-1½		454 (500-1½)	
LNAV MDA	740-1	505 (600-1)	740-1⅓	505 (600-1⅓)

SE-4, 15 AUG 2019 to 12 SEP 2019

SE-4, 15 AUG 2019 to 12 SEP 2019