

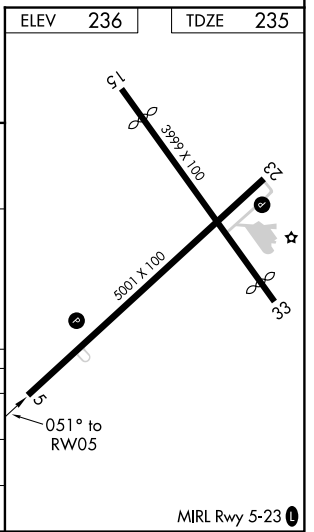
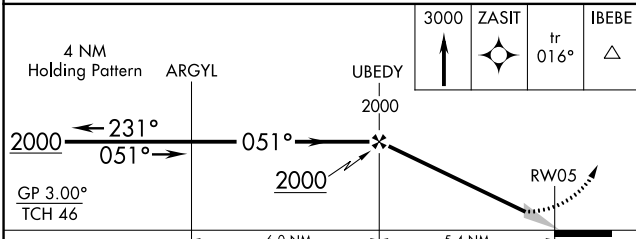
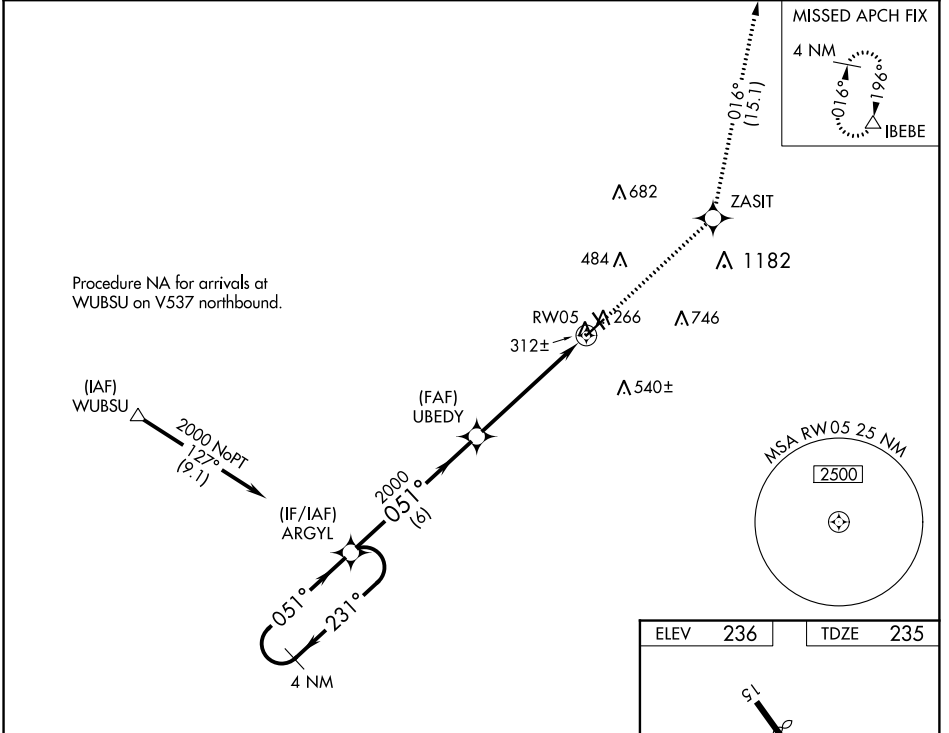
WAAS CH <b>42506</b> <b>W05A</b>	APP CRS <b>051°</b>	Rwy Idg TDZE Apt Elev	<b>5001</b> <b>235</b> <b>236</b>
--	------------------------	-----------------------------	---

# RNAV (GPS) RWY 5

COOK COUNTY (15J)

RNP APCH.	<p>Baro-VNAV NA. Use Moultrie altimeter setting; when not received, use Valdosta Rgnl altimeter setting and increase all DA 7 feet and all MDA 20 feet.</p>	<p>MISSED APPROACH: Climb to 3000 direct ZASIT and on track 016° to IBEBE and hold.</p>
-----------	---	---

MOULTRIE AWOS-3PT <b>118.925</b>	VALDOSTA APP CON★ <b>126.6 285.6</b>	UNICOM <b>122.8 (CTAF) 0</b>
-------------------------------------	---	---------------------------------



CATEGORY	A	B	C	D
LPV DA	536-1 301 (300-1)			
LNAV/VNAV DA	720-1½ 485 (500-1½)			
LNAV MDA	840-1 605 (700-1)		840-1¾ 605 (700-1¾)	

SE-4, 15 AUG 2019 to 12 SEP 2019

SE-4, 15 AUG 2019 to 12 SEP 2019