

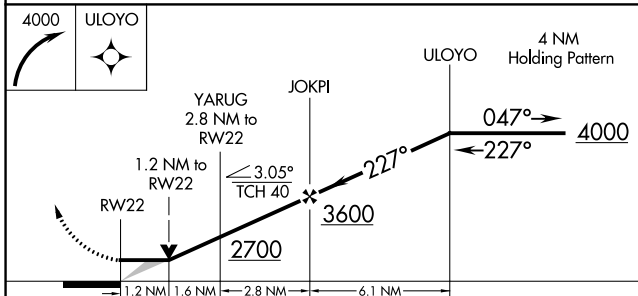
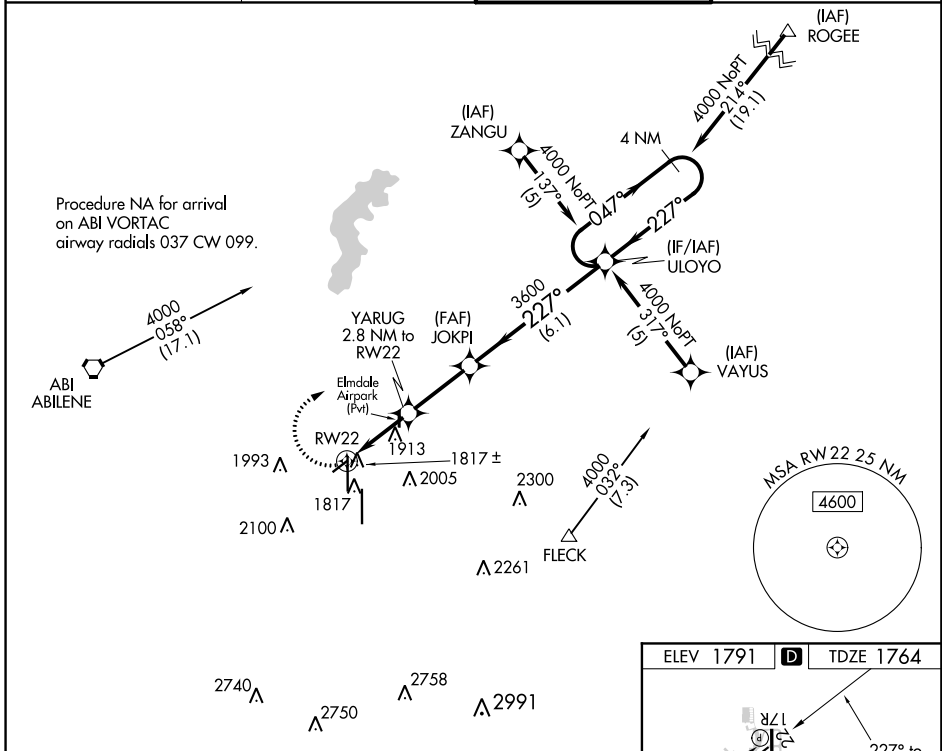
APP CRS	Rwy Idg	<b>3678</b>
<b>227°</b>	TDZE	<b>1764</b>
	Apt Elev	<b>1791</b>

# RNAV (GPS) RWY 22

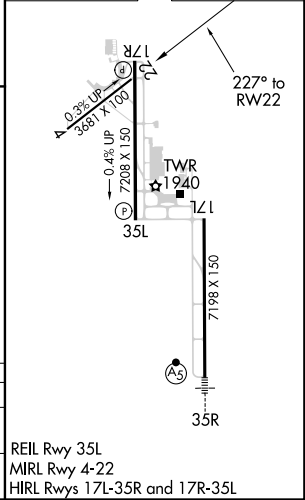
ABILENE RGNL (ABI)

ASR	DME/DME RNP-0.3 NA.	MISSED APPROACH: Climbing right turn to 4000 direct ULOYO and hold.	
-----	---------------------	---	--

ATIS <b>118.25</b>	ABILENE APP CON <b>125.0 338.3 (EAST)</b> <b>127.2 282.3 (WEST)</b>	ABILENE TOWER <b>120.1 257.8</b>	GND CON <b>121.7 348.6</b>
-----------------------	---	-------------------------------------	-------------------------------



ELEV 1791	<b>D</b>	TDZE 1764
-----------	----------	-----------



CATEGORY	A	B	C	D
LNVA MDA	2180-1	416 (500-1)	2180-1 $\frac{1}{8}$	416 (500-1 $\frac{1}{8}$ )
<b>C</b> CIRCLING	2300-1 509 (600-1)	2320-1 529 (600-1)	2420-1 $\frac{3}{4}$ 629 (700-1 $\frac{3}{4}$ )	2460-2 669 (700-2)

REIL Rwy 35L  
MIRL Rwy 4-22  
HIRL Rws 17L-35R and 17R-35L

SC-2, 12 SEP 2019 to 10 OCT 2019

SC-2, 12 SEP 2019 to 10 OCT 2019