

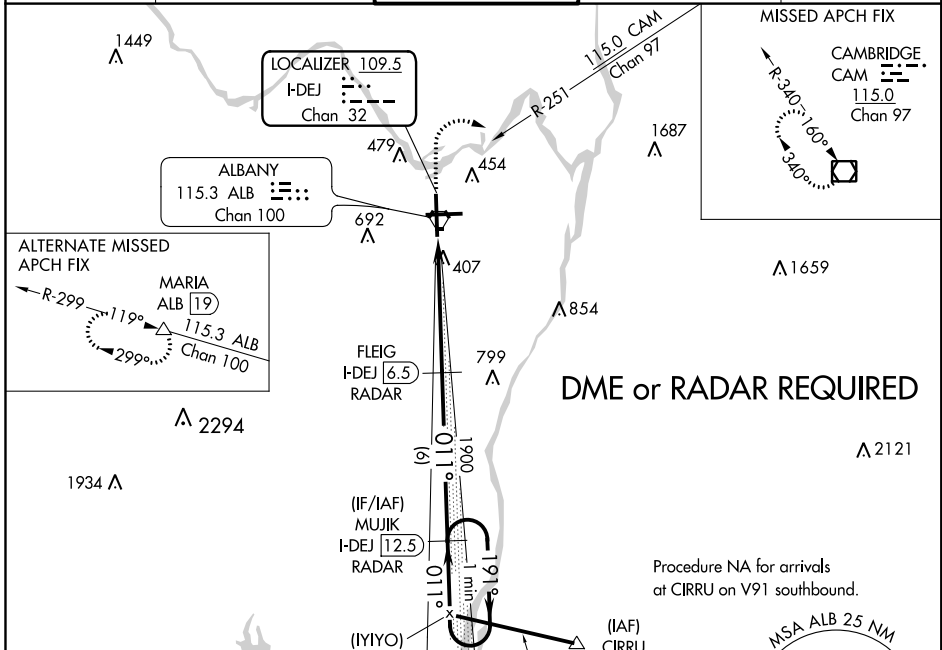
LOC/DME I-DEJ 109.5 Chan 32	APP CRS 011°	Rwy Idg TDZE Apt Elev	8500 284 285
--	------------------------	-----------------------------	---

ILS RWY 1 (SA CAT II)

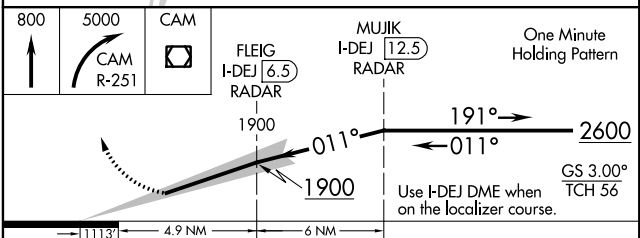
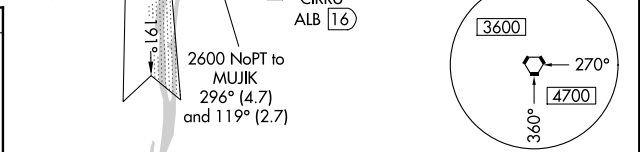
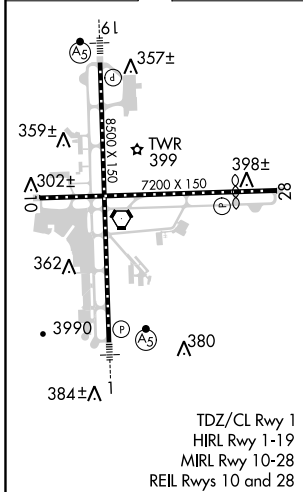
ALBANY INTL (ALB)

▼ DME or RADAR required. Reduced Lighting: Requires specific OPSPEC, MSPEC, or LOA approval and use of autoland or HUD to touchdown.	MALSR 	MISSED APPROACH: Climb to 800 then climbing right turn to 5000 and on CAM VOR/DME R-251 to CAM VOR/DME and hold.
---	-----------	--

D-ATIS 120.45	ALBANY APP CON 132.825 307.2	ALBANY TOWER 119.5 257.8	GND CON 121.7 348.6	CLNC DEL 127.50
-------------------------	--	------------------------------------	-------------------------------	---------------------------



ELEV 285	D	TDZE 284
----------	----------	----------



800	5000	CAM	FLEIG I-DEJ [6.5] RADAR	MUJIK I-DEJ [12.5] RADAR	One Minute Holding Pattern
-----	------	-----	-------------------------	--------------------------	----------------------------

CATEGORY	A	B	C	D
S-ILS 1	RA 100/12 100 DA 384			

SA CATEGORY II ILS - SPECIAL AIRCREW & AIRCRAFT CERTIFICATION REQUIRED

NE-2, 12 SEP 2019 to 10 OCT 2019

NE-2, 12 SEP 2019 to 10 OCT 2019